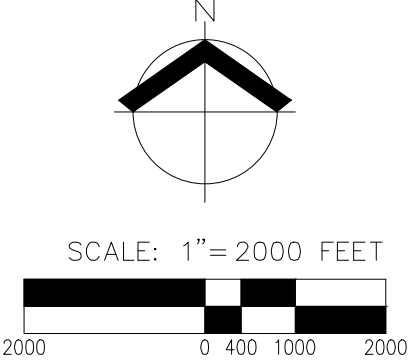
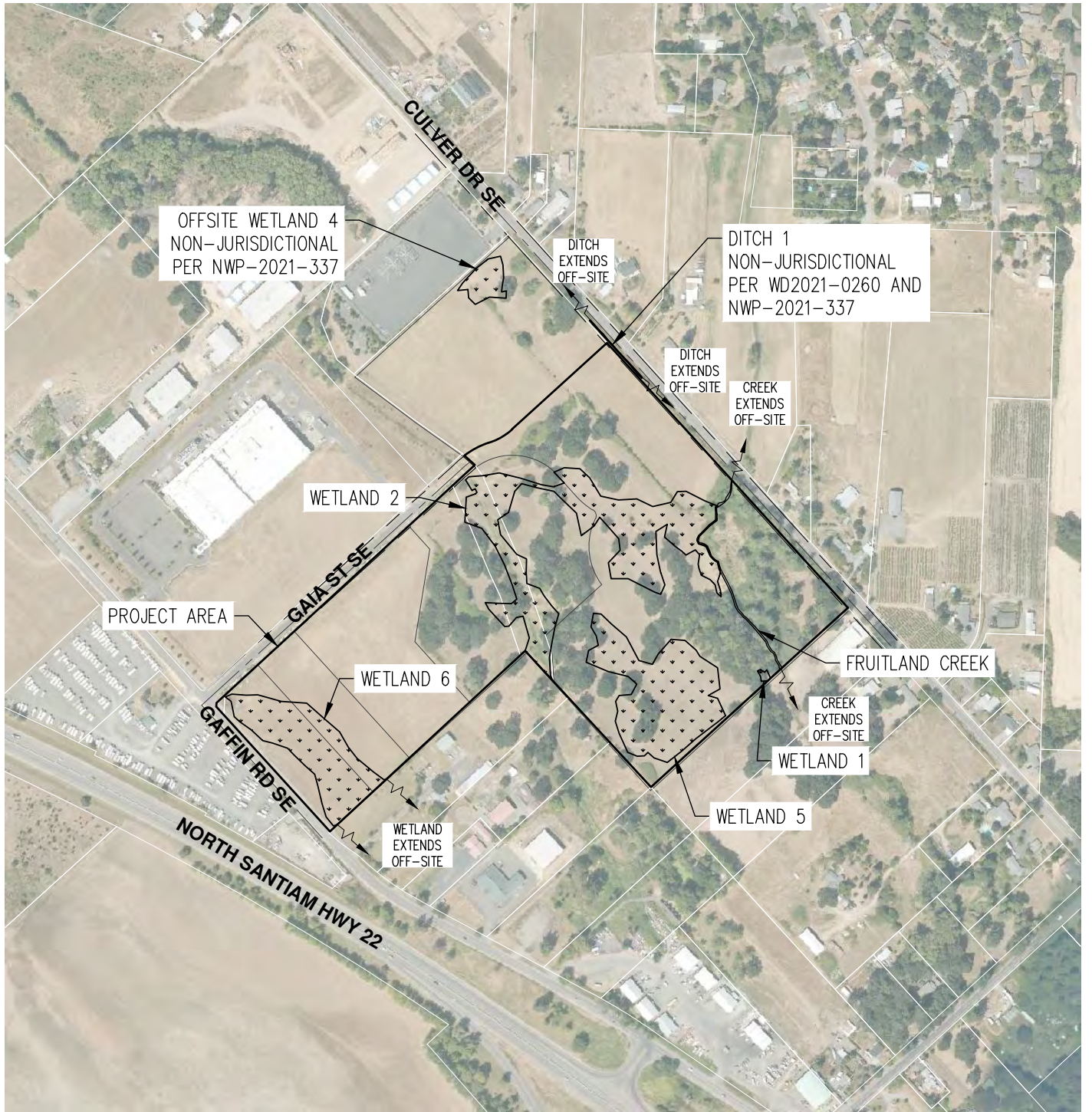


USGS 7.5' TOPOGRAPHIC SERIES
 QUADRANGLE: SALEM, OR (2020)

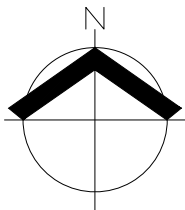
DATE: 11/29/2021



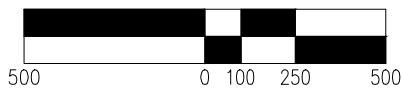
USGS VACINITY MAP		FIGURE 1
SALEM BUSINESS CAMPUS - LOT 1 - JPA AKS ENGINEERING & FORESTRY, LLC 3700 RIVER RD N, STE 1 KEIZER, OR 97303 503.400.6028 WWW.AKS-ENG.COM		
AKS		DRWN: CRT CHKD: SRR AKS JOB: 5218-07



BING MAPS AERIAL PHOTO 2018



SCALE: 1" = 500 FEET



DATE: 11/29/2021

AERIAL PHOTO

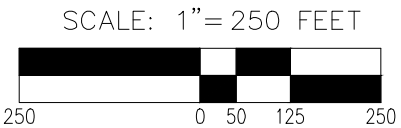
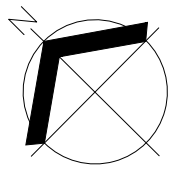
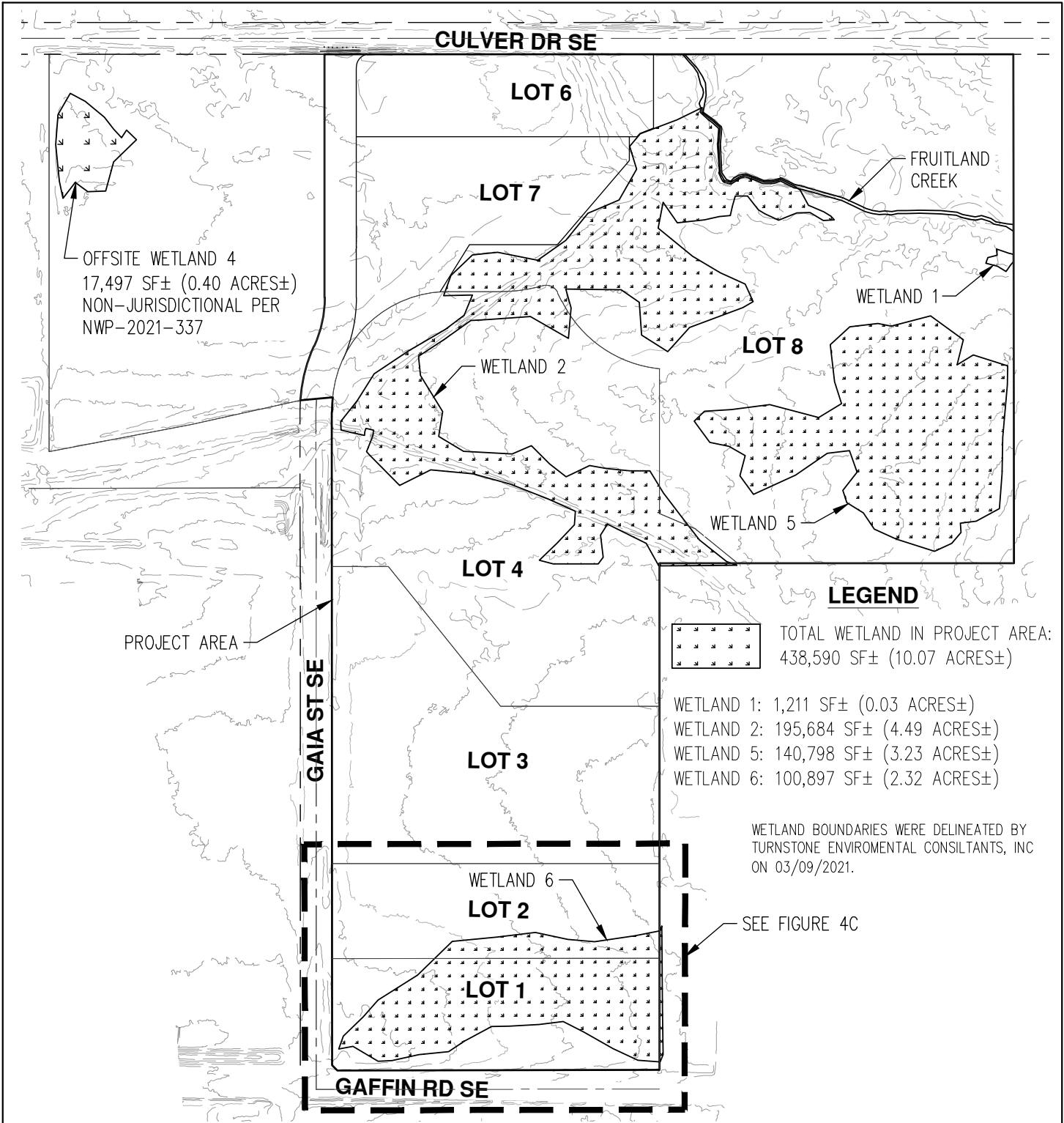
SALEM BUSINESS CAMPUS - LOT 1 - JPA

AKS ENGINEERING & FORESTRY, LLC
 3700 RIVER RD N, STE 1
 KEIZER, OR 97303
 503.400.6028 WWW.AKS-ENG.COM

FIGURE
3

DRWN: CRT
 CHKD: SRR
 AKS JOB:
 5218-07





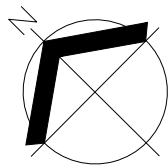
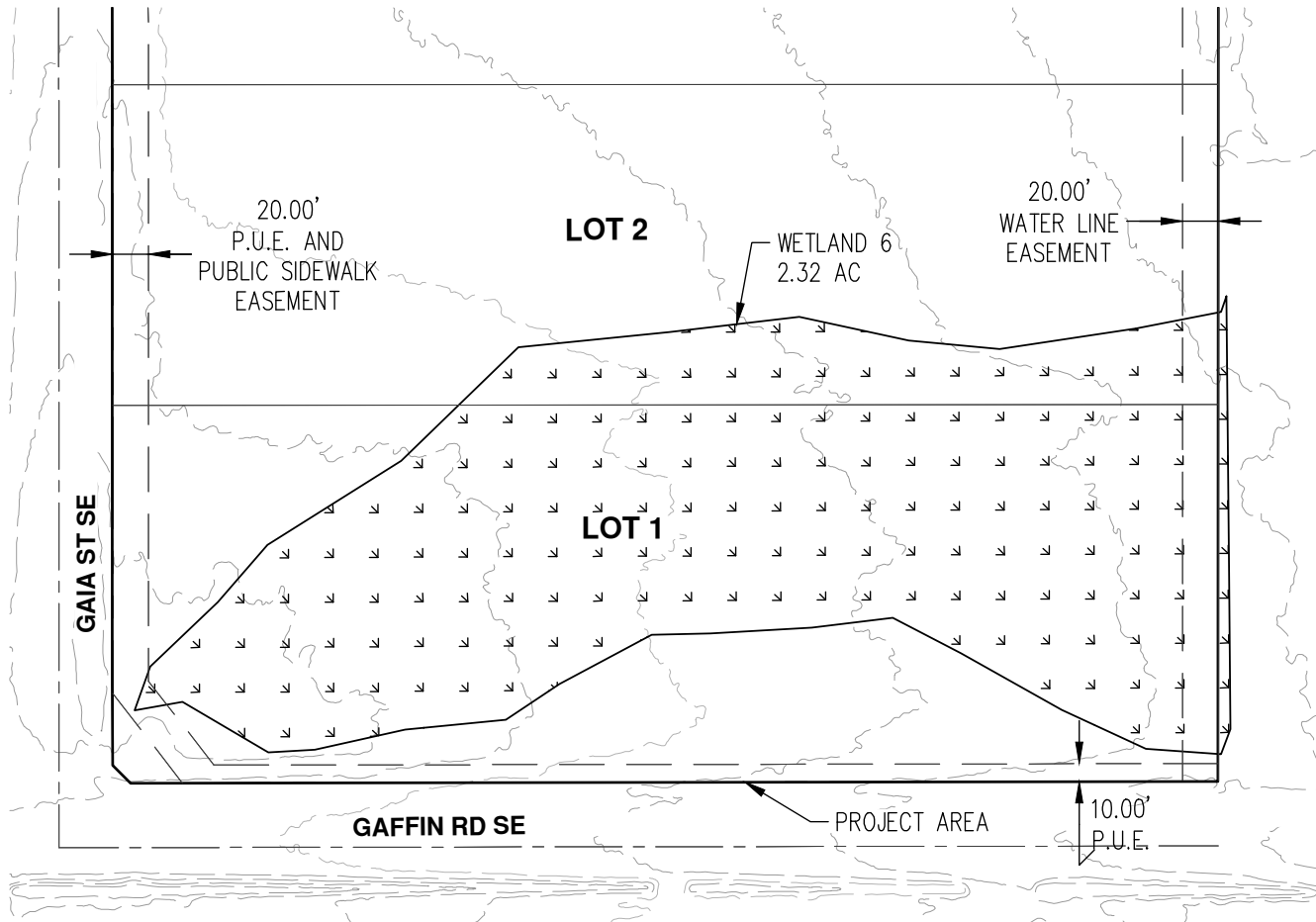
DATE: 11/29/2021

OVERALL EXISTING CONDITIONS PLAN

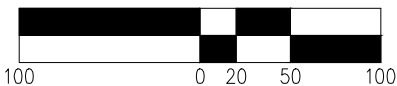
SALEM BUSINESS CAMPUS - LOT 1 - JPA
 AKS ENGINEERING & FORESTRY, LLC
 3700 RIVER RD N, STE 1
 KEIZER, OR 97303
 503.400.6028 WWW.AKS-ENG.COM



FIGURE 4A
DRWN: CRT
CHKD: SRR
AKS JOB: 5218-07



SCALE: 1" = 100 FEET



DATE: 11/29/2021

EXISTING CONDITIONS

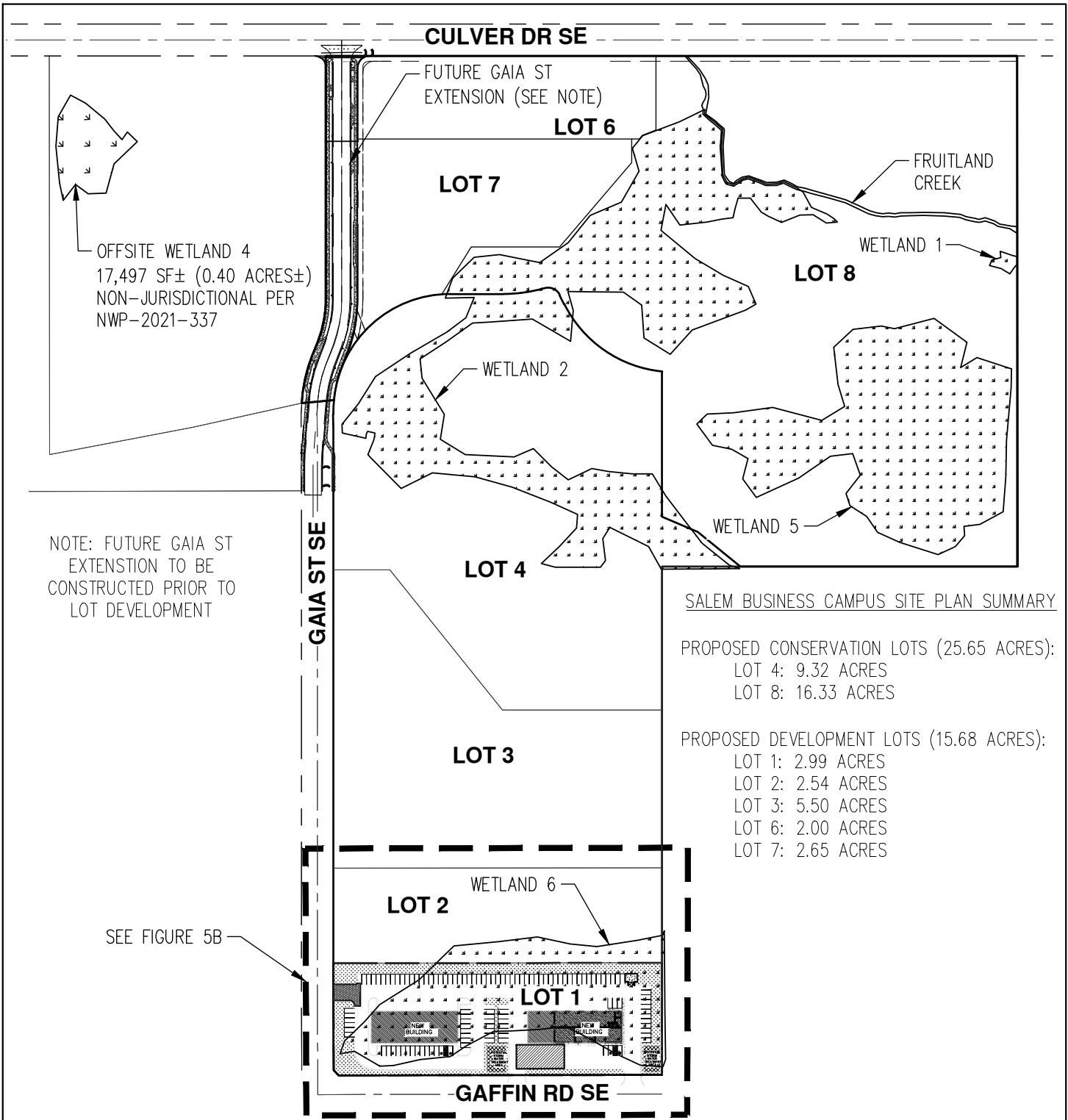
SALEM BUSINESS CAMPUS - LOT 1 - JPA

AKS ENGINEERING & FORESTRY, LLC
 3700 RIVER RD N, STE 1
 KEIZER, OR 97303
 503.400.6028 WWW.AKS-ENG.COM

FIGURE
4B

DRWN: CRT
 CHKD: SRR
 AKS JOB:
 5218-07





SALEM BUSINESS CAMPUS SITE PLAN SUMMARY

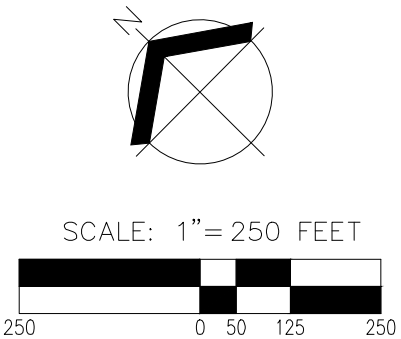
PROPOSED CONSERVATION LOTS (25.65 ACRES):

- LOT 4: 9.32 ACRES
- LOT 8: 16.33 ACRES

PROPOSED DEVELOPMENT LOTS (15.68 ACRES):

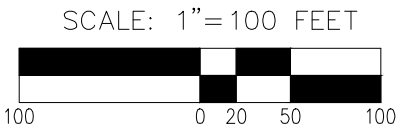
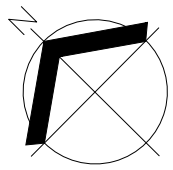
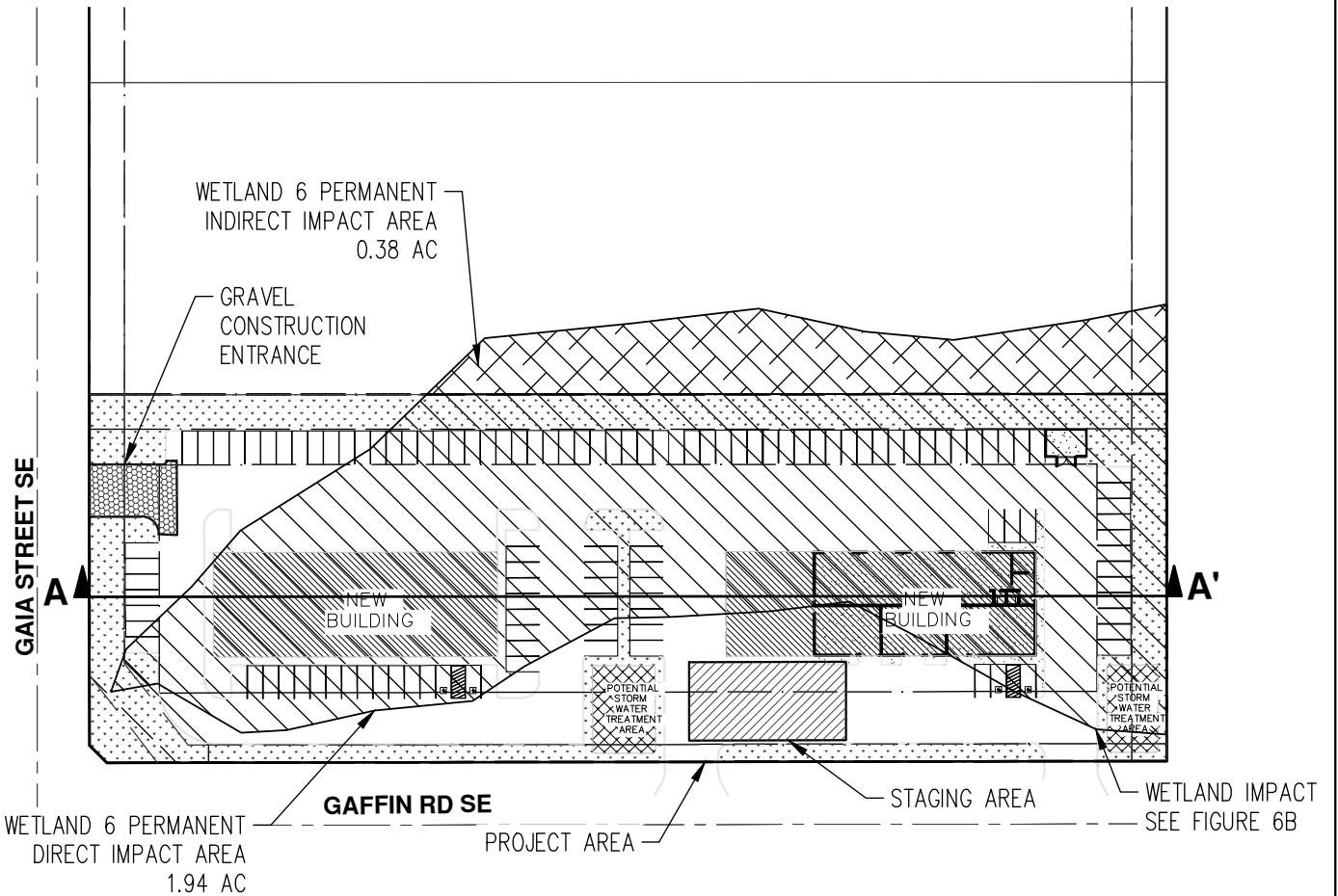
- LOT 1: 2.99 ACRES
- LOT 2: 2.54 ACRES
- LOT 3: 5.50 ACRES
- LOT 6: 2.00 ACRES
- LOT 7: 2.65 ACRES

DATE: 11/29/2021



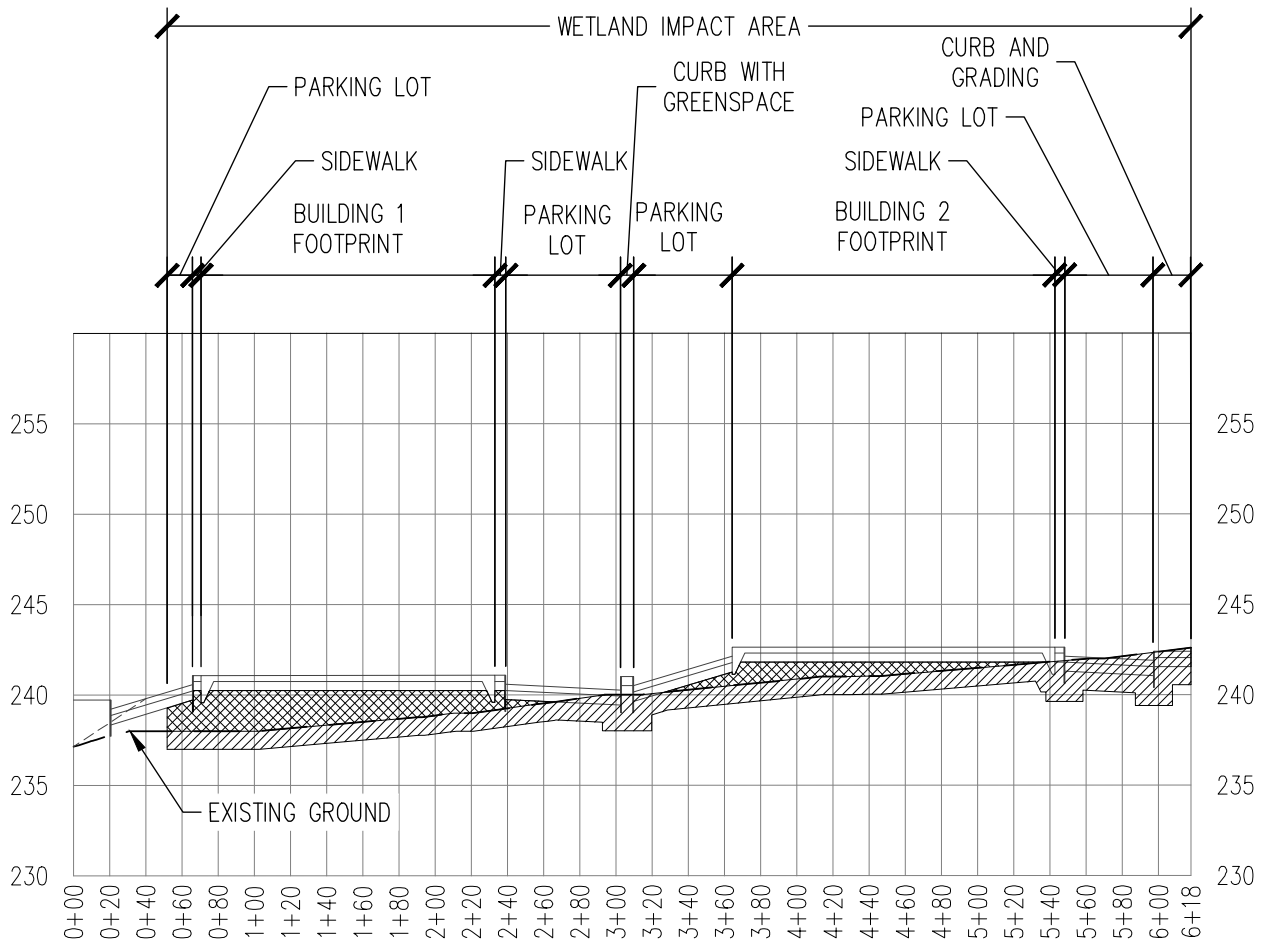
OVERALL SITE PLAN		FIGURE 5A
SALEM BUSINESS CAMPUS - LOT 1 - JPA		DRWN: CRT
AKS ENGINEERING & FORESTRY, LLC		CHKD: SRR
3700 RIVER RD N, STE 1		AKS JOB:
KEIZER, OR 97303		5218-07
503.400.6028 WWW.AKS-ENG.COM		





DATE: 11/29/2021

SITE PLAN		FIGURE 5B
SALEM BUSINESS CAMPUS - LOT 1 - JPA		
AKS ENGINEERING & FORESTRY, LLC		DRWN: CRT
3700 RIVER RD N, STE 1		CHKD: SRR
KEIZER, OR 97303		AKS JOB:
503.400.6028 WWW.AKS-ENG.COM		5218-07



CROSS-SECTION A-A'

HOR: 1" = 100'

VERT: 1" = 10'

PERMANENT IMPACTS			
WETLAND	SF/ACRES	REMOVAL (CY)	FILL (CY)
WETLAND 6 DIRECT IMPACT	1.94 AC	3130	6542
WETLAND 6 INDIRECT IMPACT	0.38 AC	N/A	N/A

LEGEND



PERMANENT WETLAND FILL



PERMANENT WETLAND REMOVAL AND FILL

DATE: 11/29/2021

WETLAND 6 IMPACT	FIGURE 6
SALEM BUSINESS CAMPUS - LOT 1 - JPA	DRWN: CRT
AKS ENGINEERING & FORESTRY, LLC	CHKD: SRR
3700 RIVER RD N, STE 1	AKS JOB:
KEIZER, OR 97303	5218-07
503.400.6028 WWW.AKS-ENG.COM	

