

Hunting on U.S. Army Corps of Engineers Lands in the Willamette Valley Project

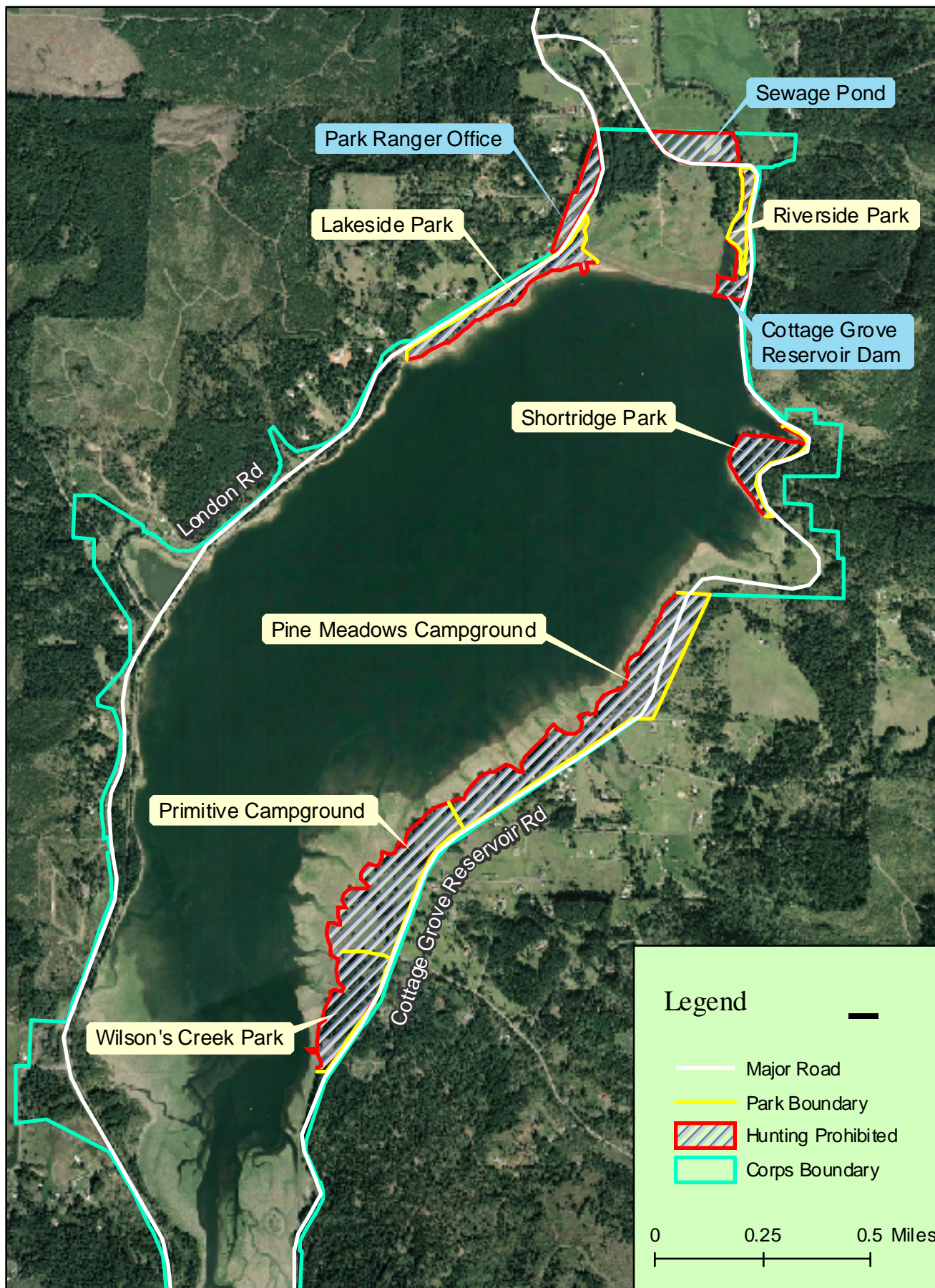
(updated 7/29/20)

All rules and regulations for public use on Corps lands are described in Title 36, Chapter III, Part 327. The following provides information specific to hunting on Corps lands within the Willamette Valley Project. Hunters should be aware that some lands surrounding Corps reservoirs are managed by other County, State and Federal agencies and different regulations may apply. Hunters are responsible for recognizing private land boundaries and should not hunt on private land without proper permission. Questions about these guidelines should be directed to the Willamette Valley Project Park Ranger Office at 541-942-5631.

The following apply to all Corps-managed lands within the Willamette Valley Project:

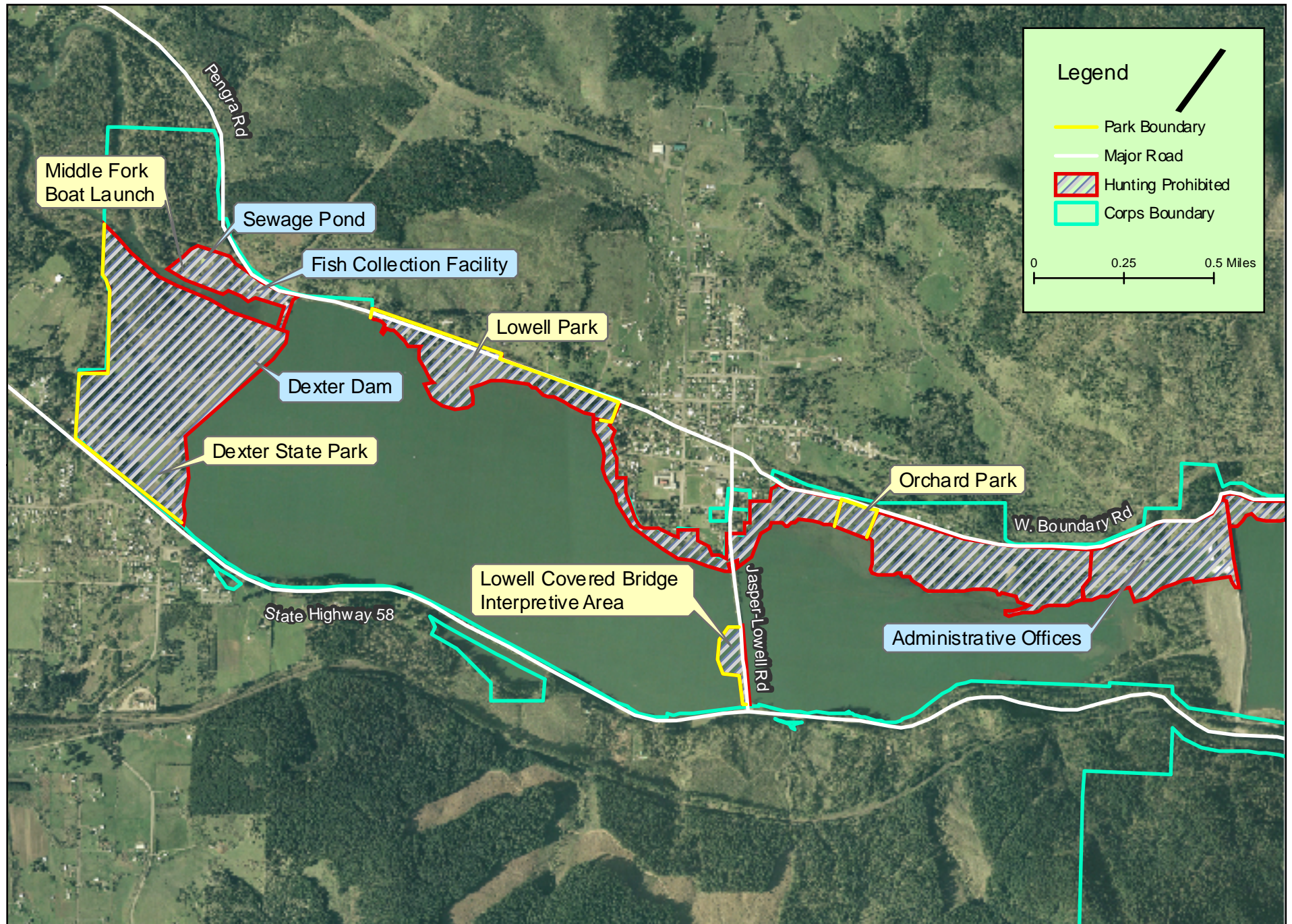
- All Oregon State hunting regulations apply to U.S. Army Corps lands.
- Only shotgun and bow hunting is permitted.
- No firearm/weapon use or shooting is allowed except during authorized hunting seasons, for the purpose of hunting.
- Hunting is not permitted in developed recreation areas, including but not limited to; campgrounds, picnic areas, boat launch facilities, and parking lots, even when these recreation areas are closed for the season. Recreation area boundaries can usually be identified by defined mow lines. Hunting in the lakebed near recreation areas is permitted below the high water mark, but shot cannot fall into developed recreation areas.
- Trapping is permitted by special permit only at the following reservoirs: Cottage Grove, Dorena, Fern Ridge, Dexter, Lookout Point, Fall Creek, Hills Creek, Foster, and Green Peter. For trapping permits, contact the Wildlife Biologist at the Fern Ridge office: 541-461-2869.
- Off-road use of motor vehicles is prohibited beyond established roads and barriers.
- Camping is permitted only in designated areas. Open fires are prohibited except in campground fire rings.
- All garbage generated during hunting and any other activity (including shell casings) must be removed from Corps lands.
- Maps showing Corps boundaries and hunting restriction areas at Cottage Grove, Dorena, Dexter, Lookout Point, Fall Creek, Hills Creek, Foster, and Green Peter Reservoirs can be found by scrolling to the bottom of this page. Click on the map you want to view.
- Information about hunting at Cougar, Blue River, and Detroit Reservoirs should be obtained from local U.S. Forest Service offices.
- A Fern Ridge Wildlife Area map can be accessed at:
<https://myodfw.com/sites/default/files/2019-12/Fern%20Ridge%20features%20and%20ownership%20map.pdf>

Hunting at Cottage Grove Reservoir U.S. Army Corps of Engineers Lands

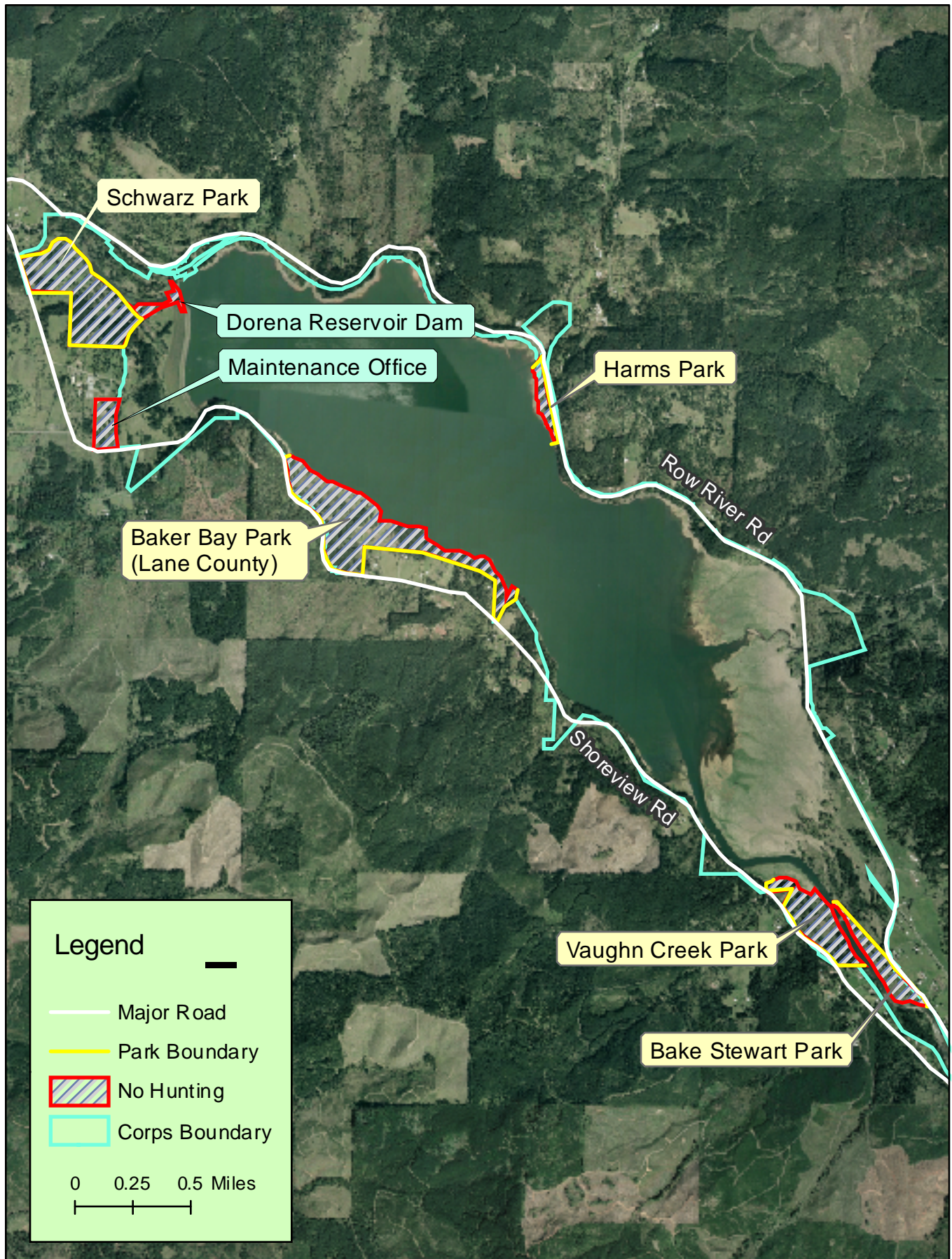


Hunting at Dexter Reservoir

U.S. Army Corps of Engineers Lands

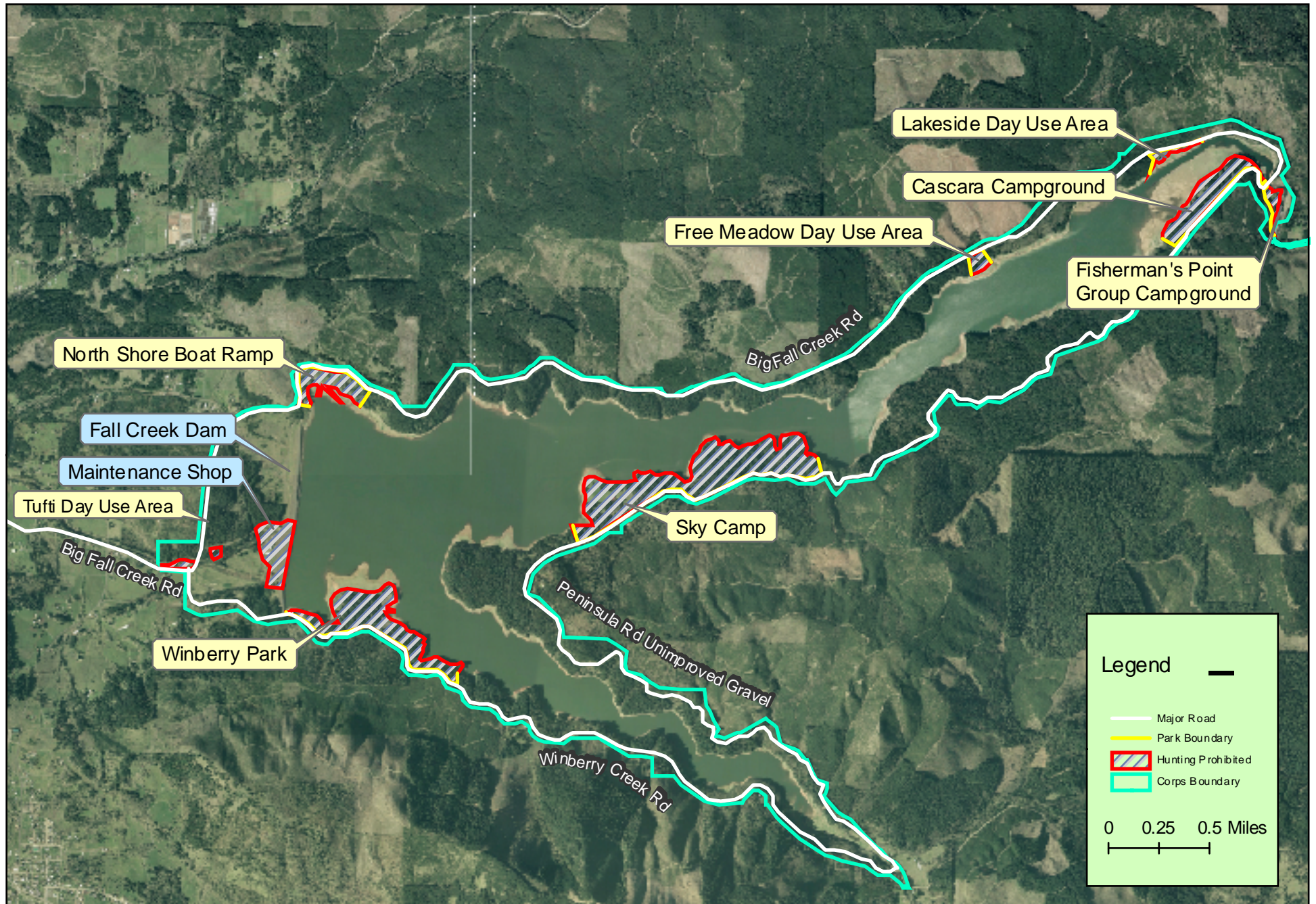


Hunting at Dorena Reservoir U.S. Army Corps of Engineers Lands



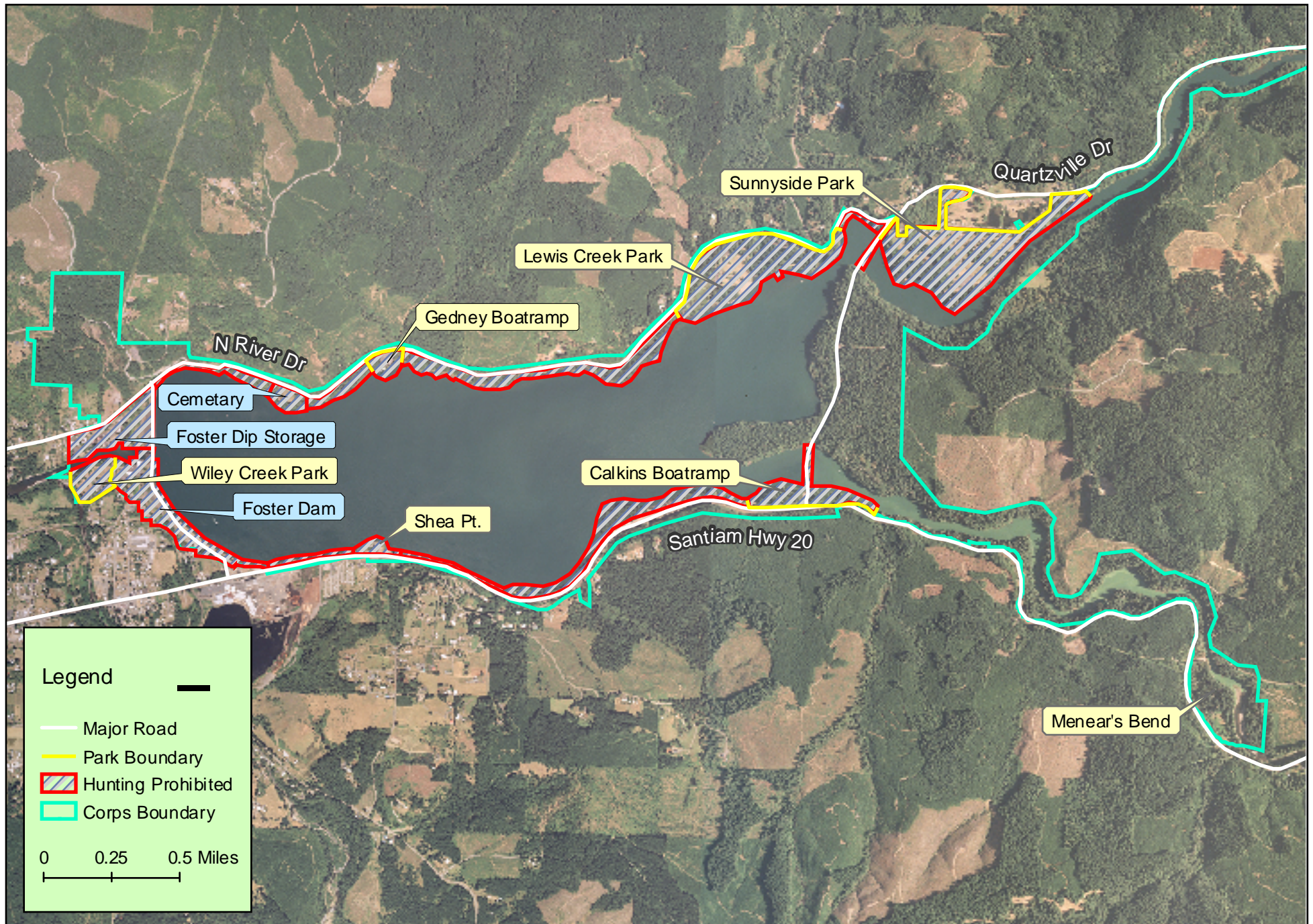
Hunting at Fall Creek Reservoir

U.S. Army Corps of Engineers Lands

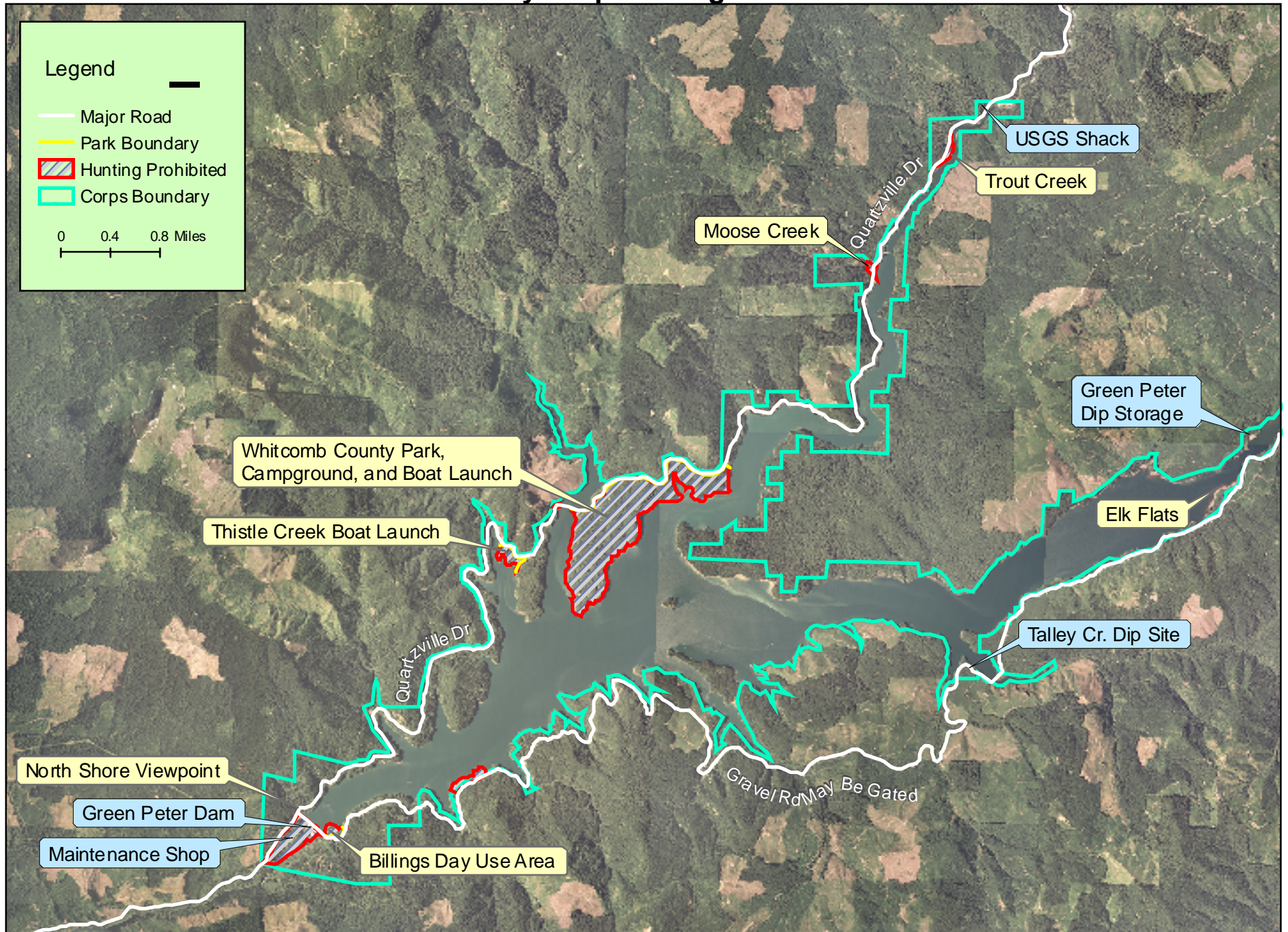


Hunting at Foster Reservoir

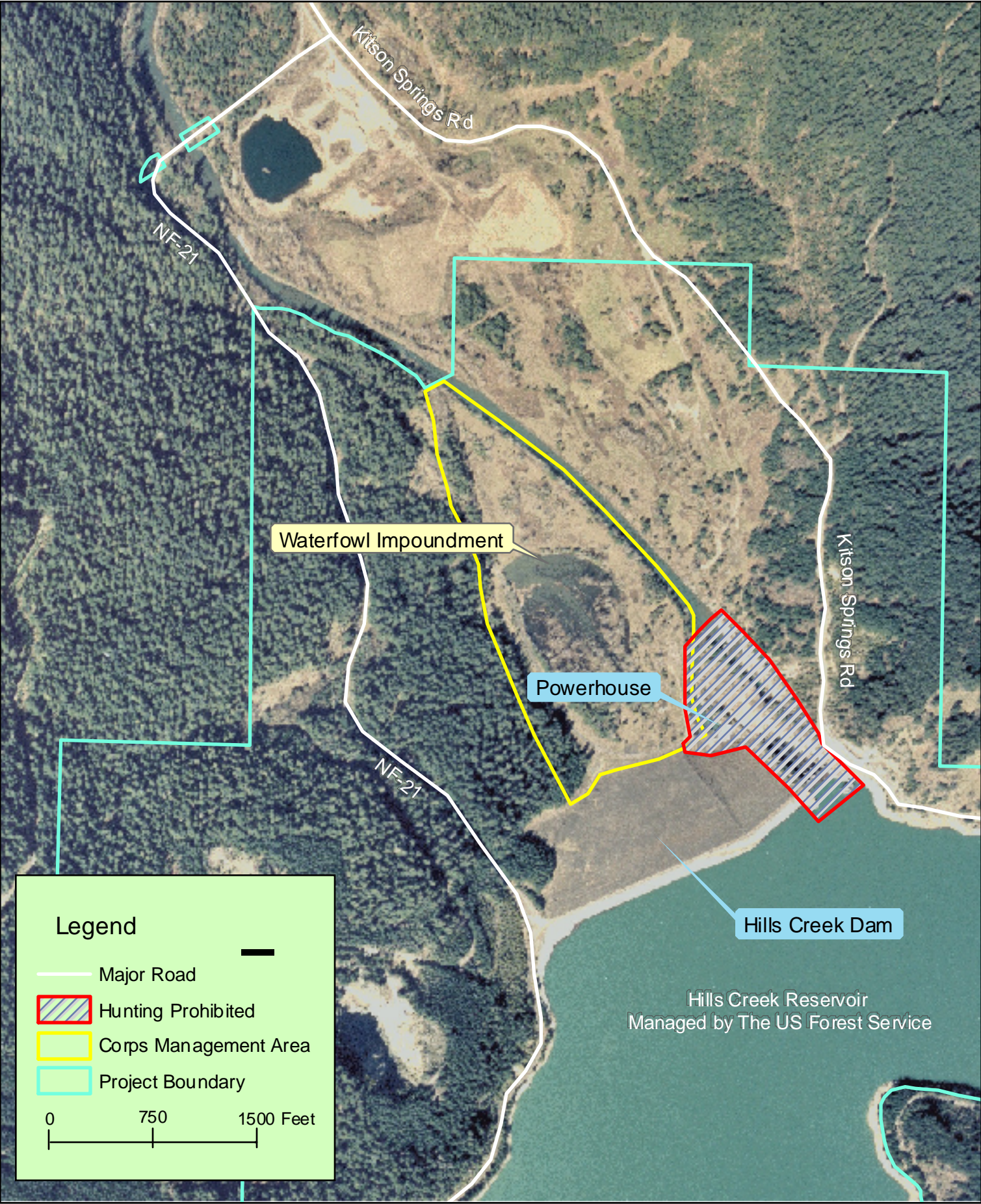
U.S. Army Corps of Engineers Lands



Hunting at Green Peter Reservoir U.S. Army Corps of Engineers Lands



**Hunting at Hills Creek Reservoir
U.S. Army Corps of Engineers Lands**



Hunting at Lookout Point Reservoir U.S. Army Corps of Engineers Lands

