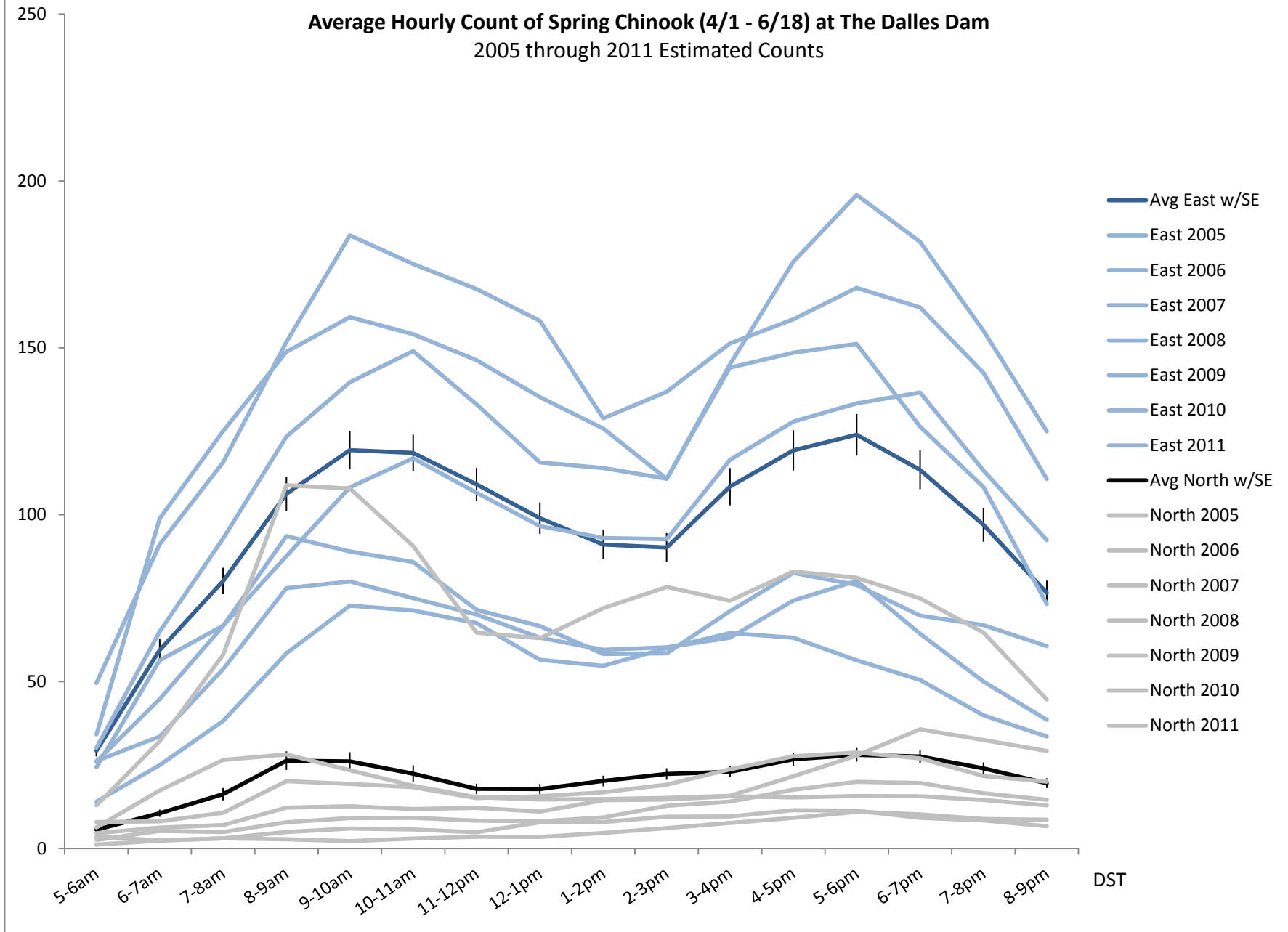
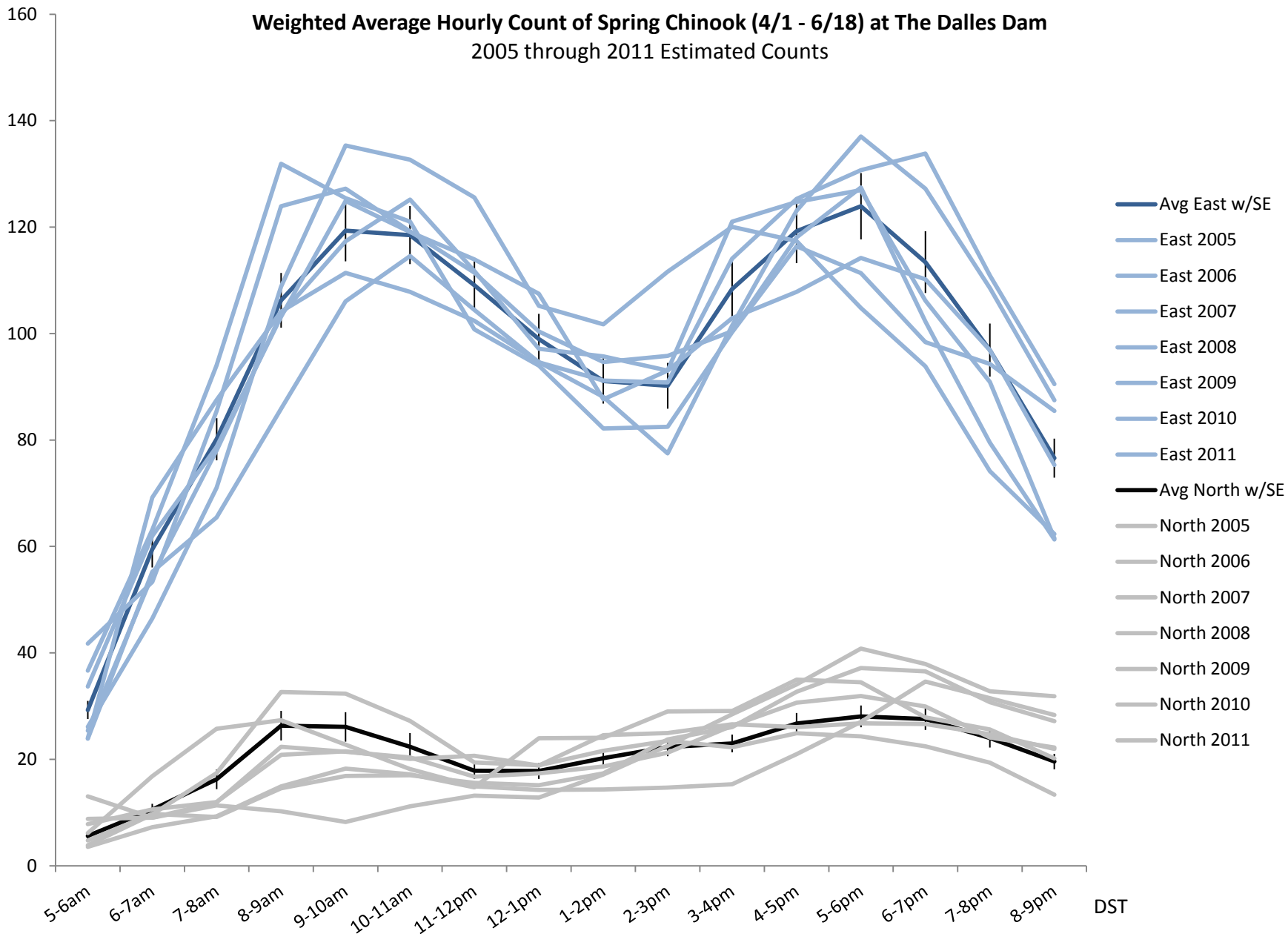


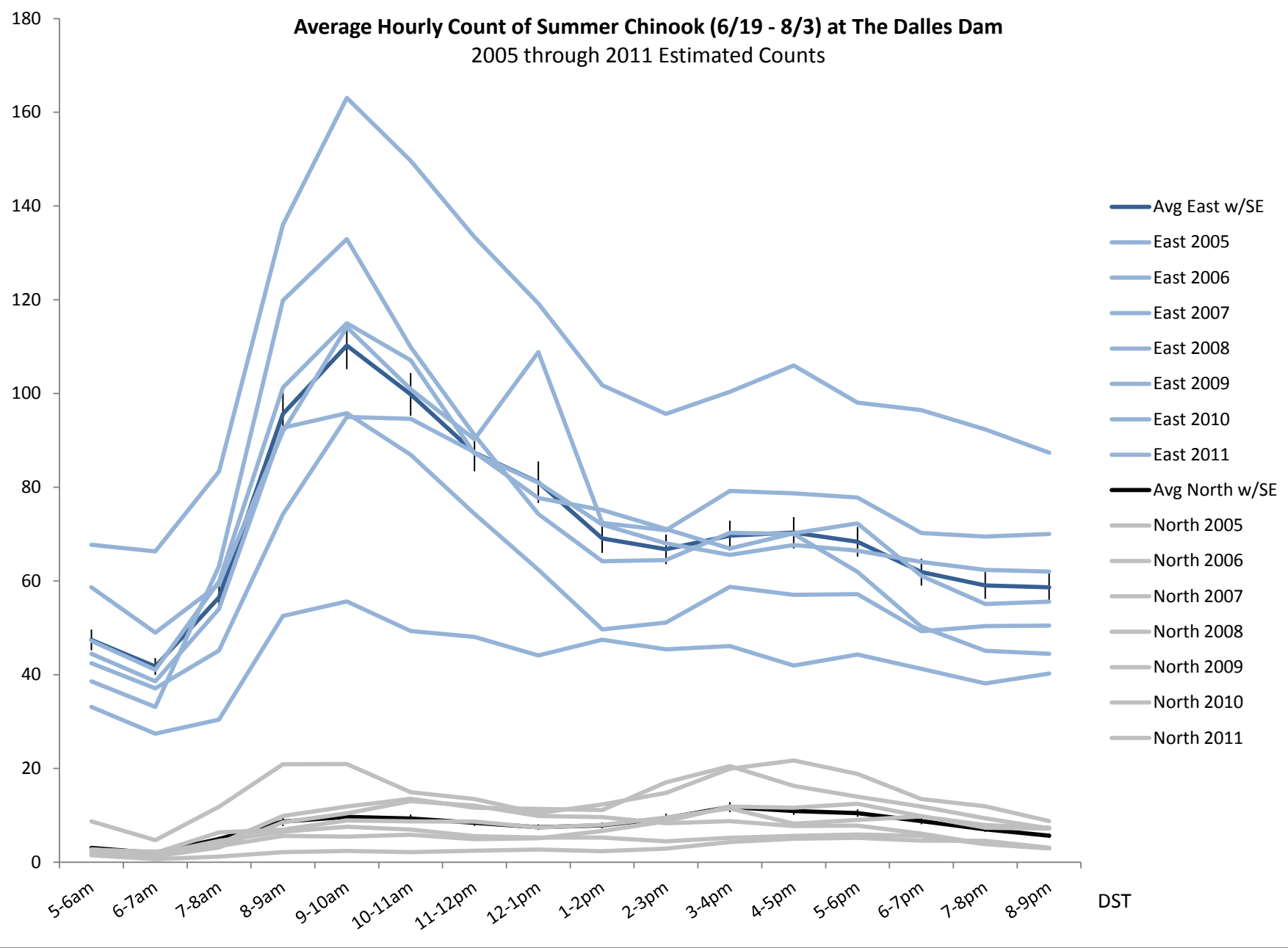
Average Hourly Count of Spring Chinook (4/1 - 6/18) at The Dalles Dam
 2005 through 2011 Estimated Counts



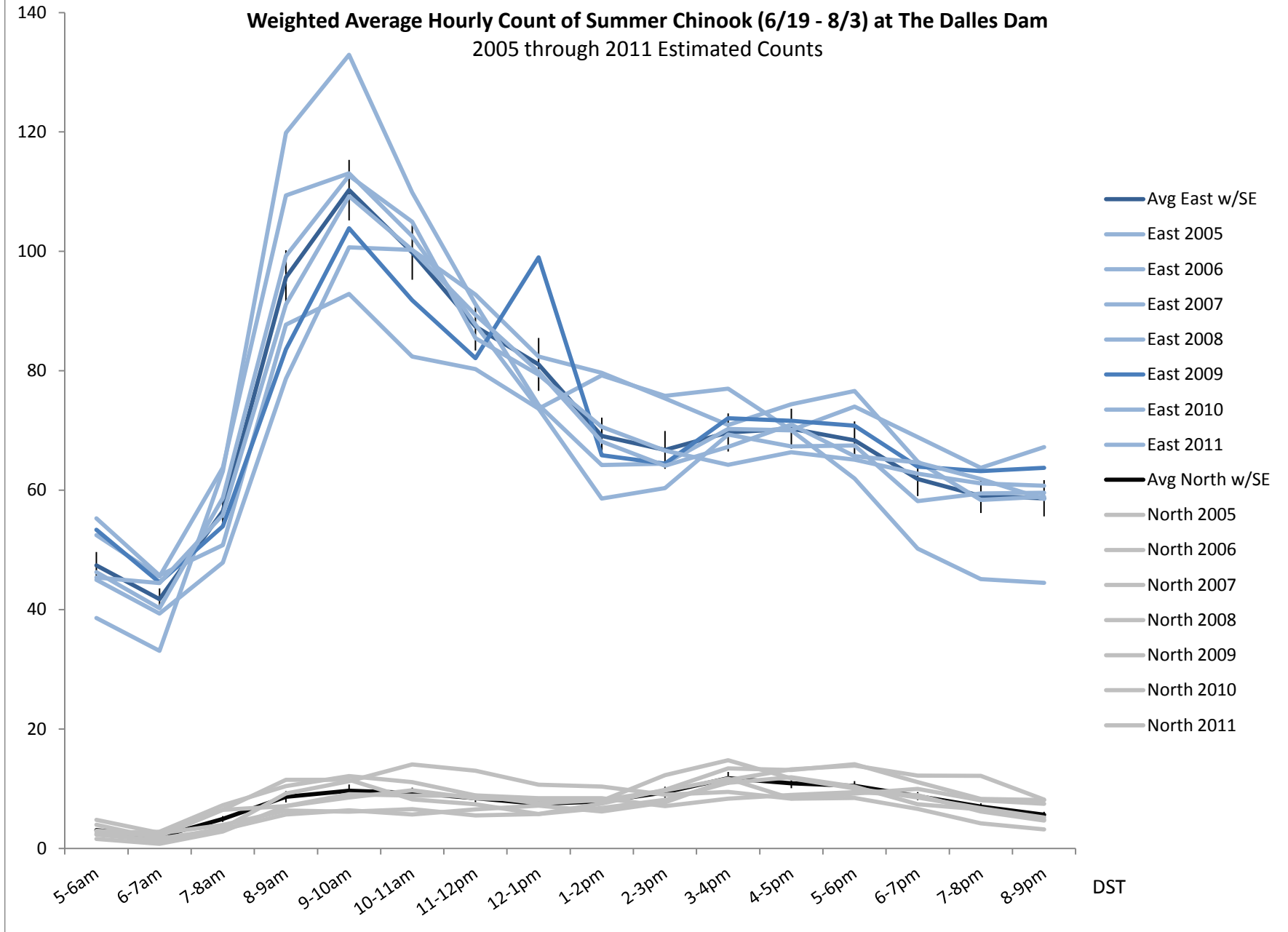
Weighted Average Hourly Count of Spring Chinook (4/1 - 6/18) at The Dalles Dam
 2005 through 2011 Estimated Counts



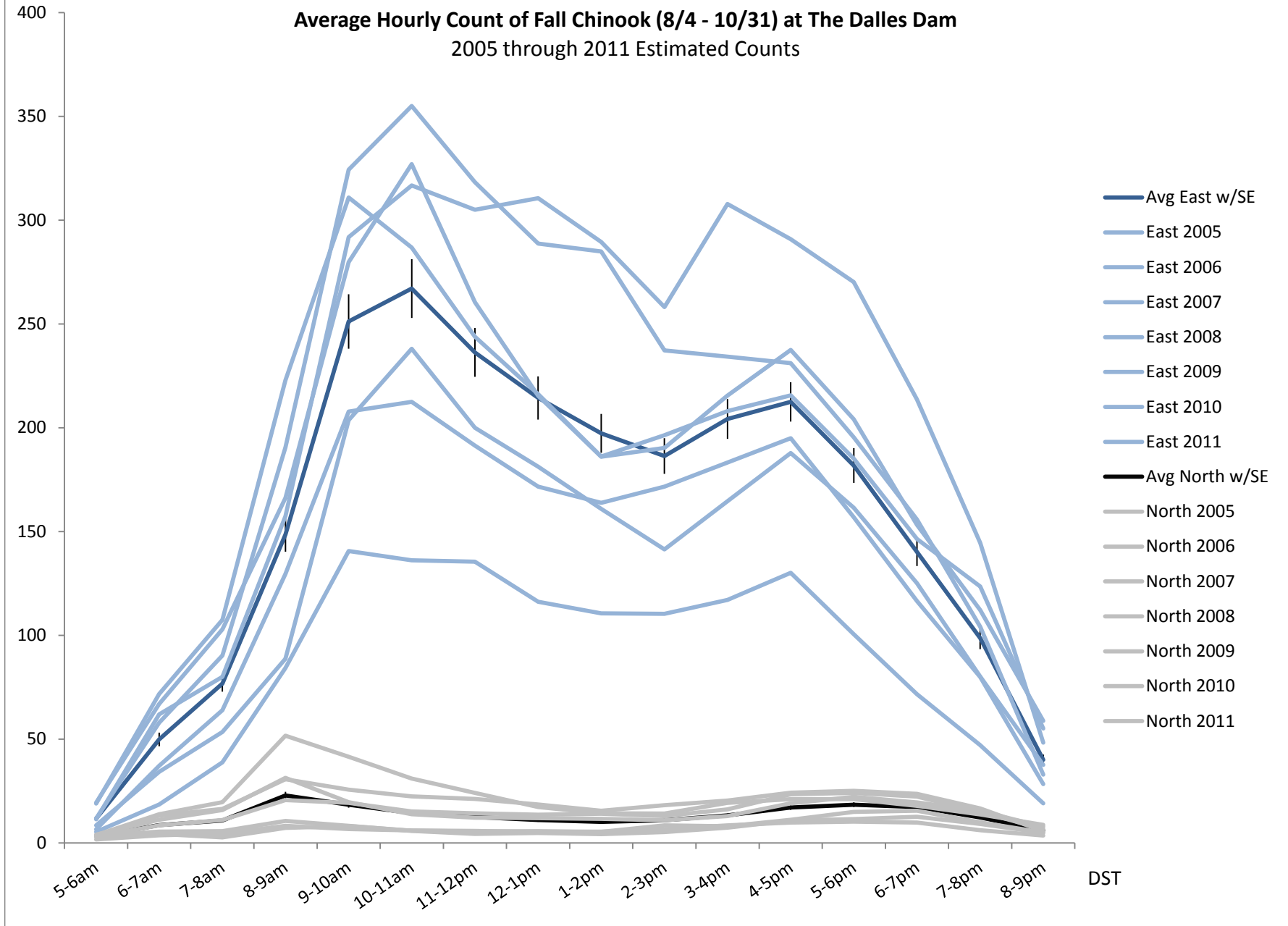
Average Hourly Count of Summer Chinook (6/19 - 8/3) at The Dalles Dam
 2005 through 2011 Estimated Counts



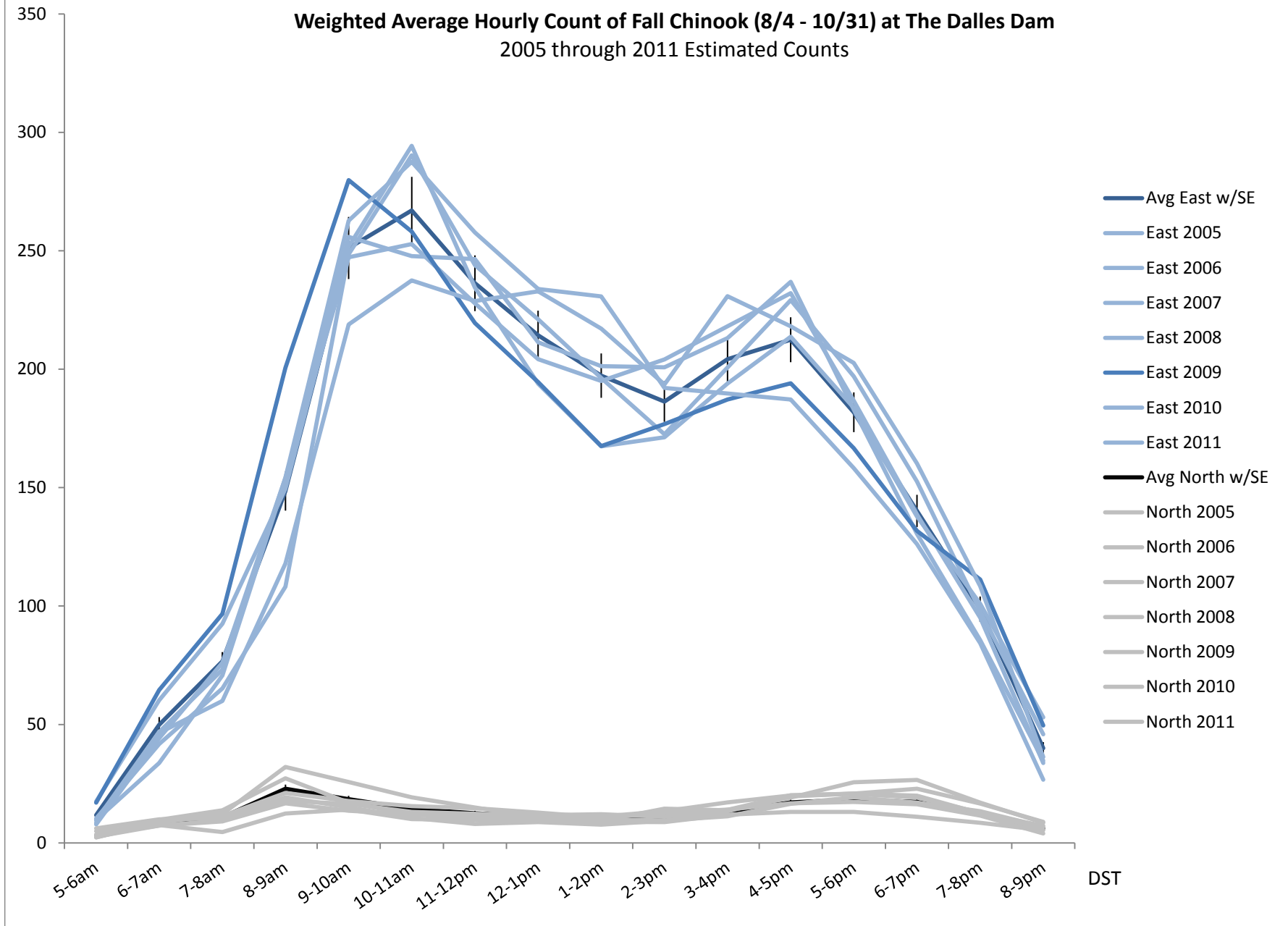
Weighted Average Hourly Count of Summer Chinook (6/19 - 8/3) at The Dalles Dam
2005 through 2011 Estimated Counts



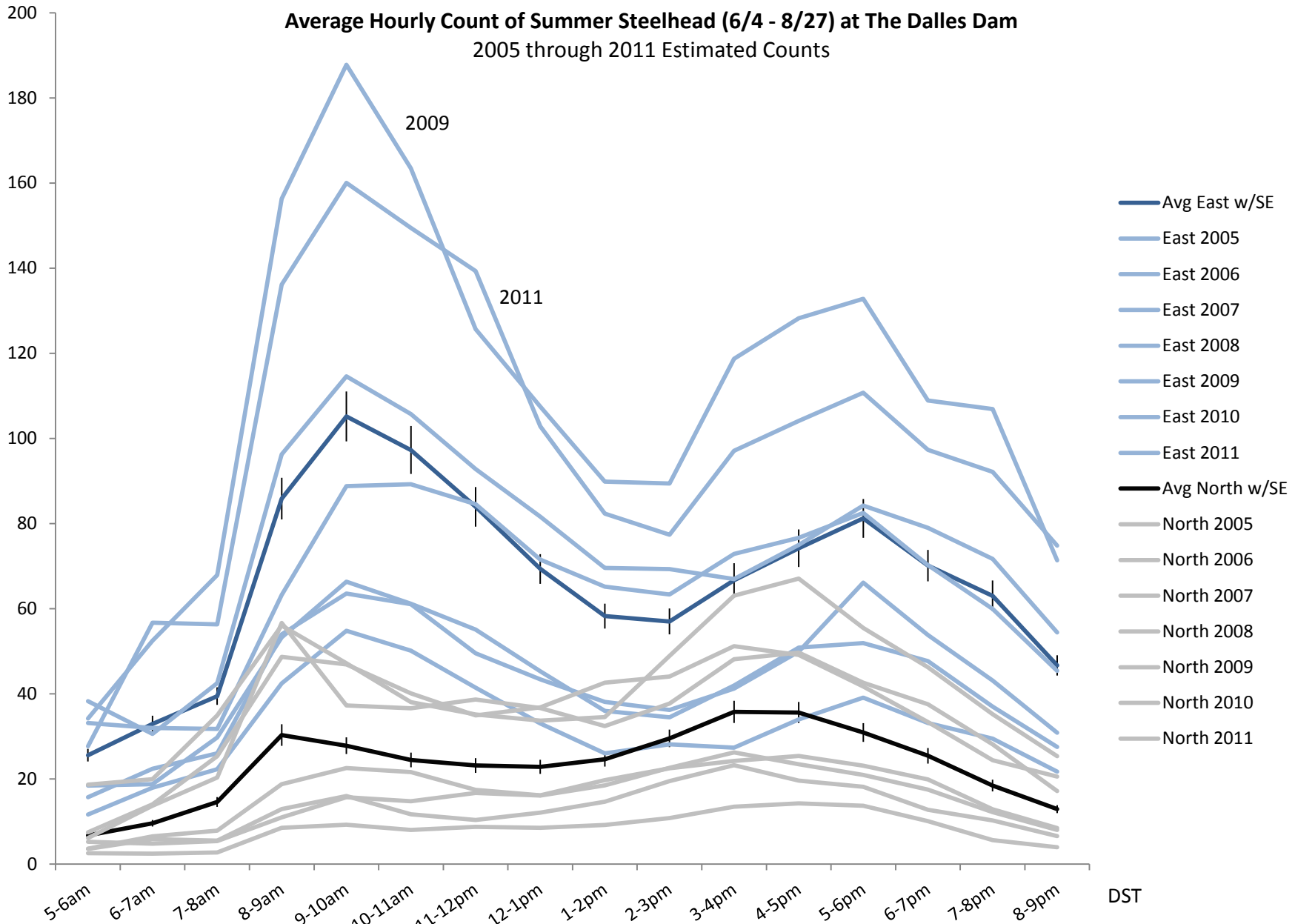
Average Hourly Count of Fall Chinook (8/4 - 10/31) at The Dalles Dam
2005 through 2011 Estimated Counts



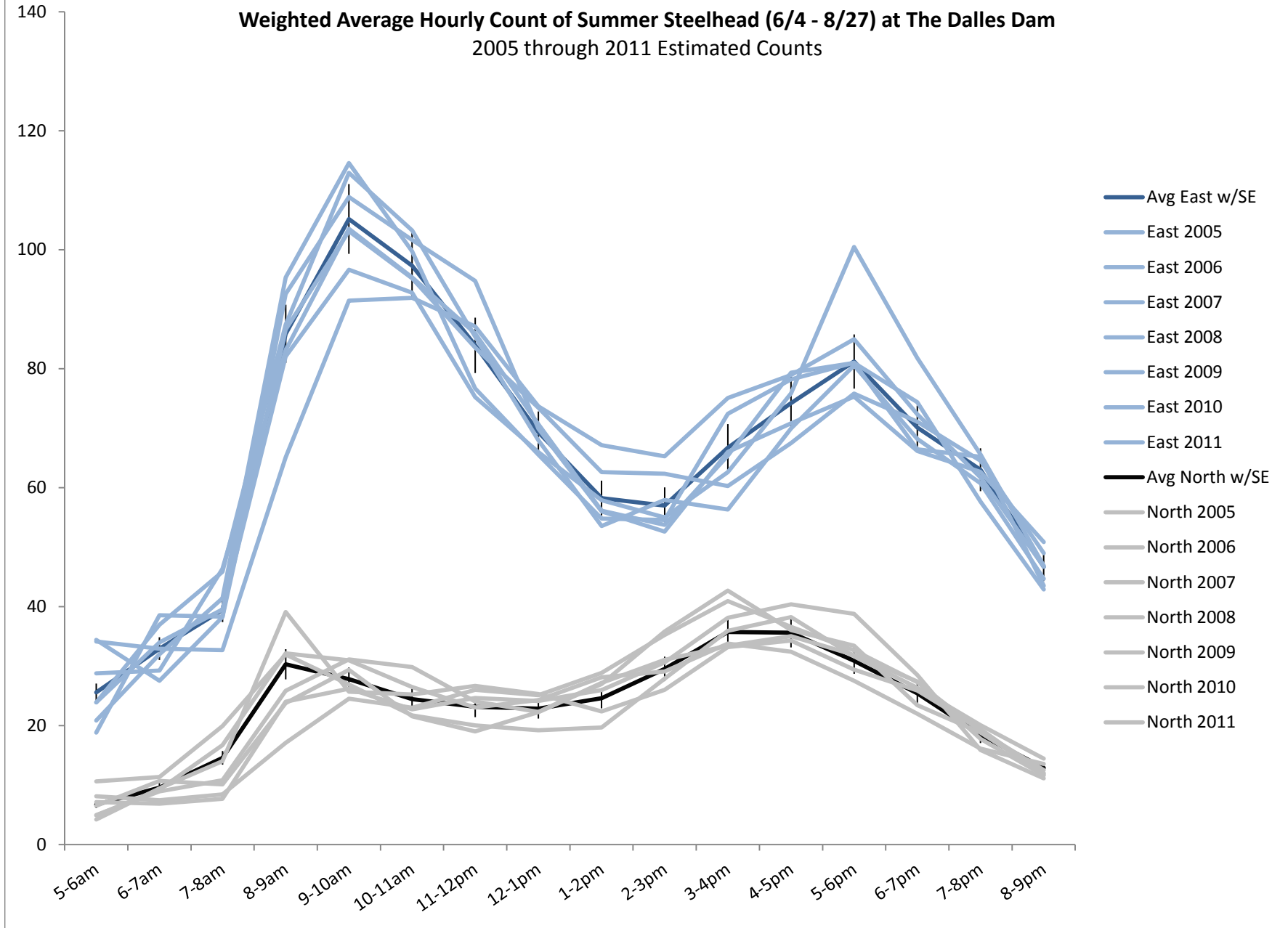
Weighted Average Hourly Count of Fall Chinook (8/4 - 10/31) at The Dalles Dam
2005 through 2011 Estimated Counts



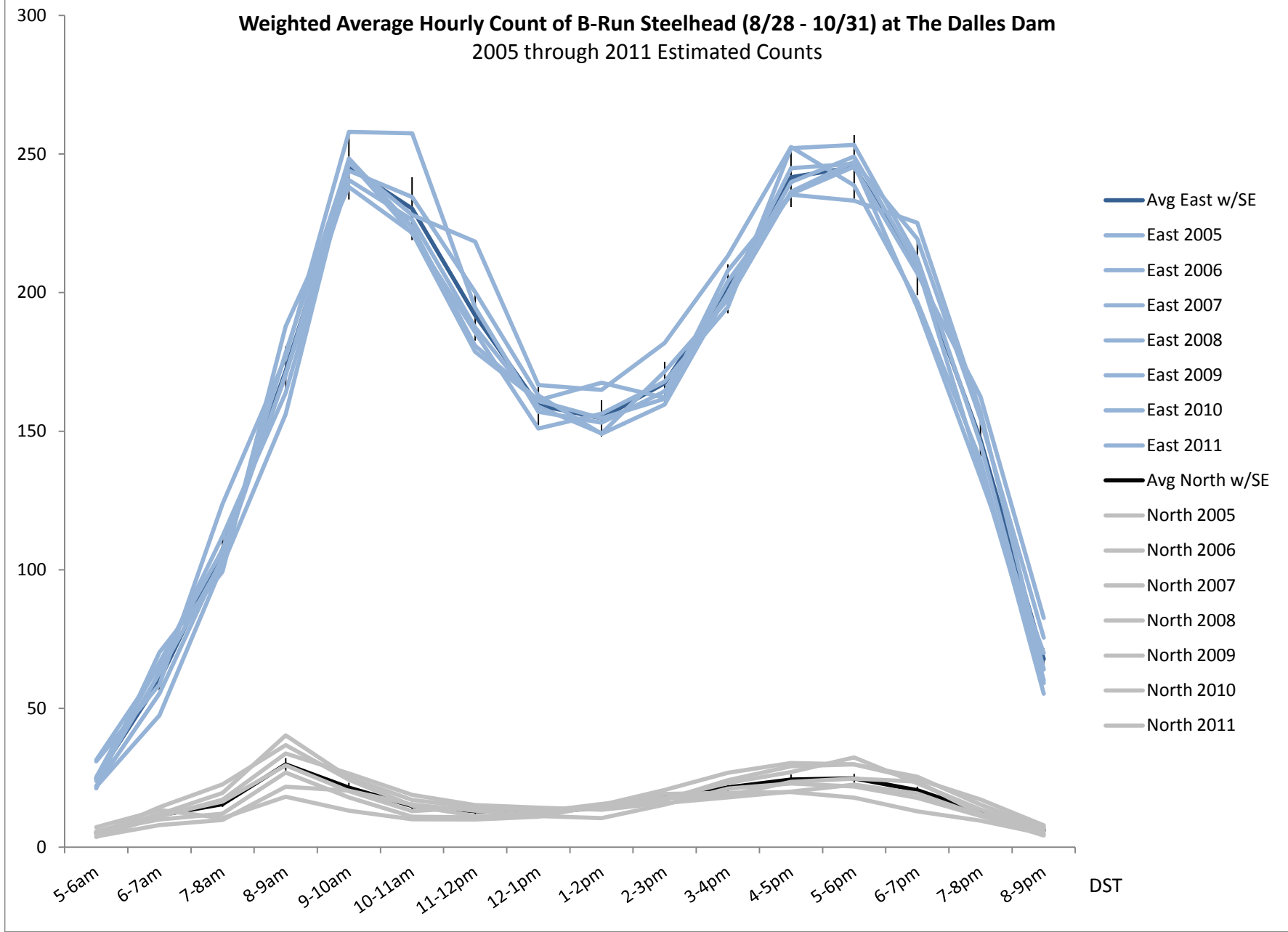
Average Hourly Count of Summer Steelhead (6/4 - 8/27) at The Dalles Dam
 2005 through 2011 Estimated Counts



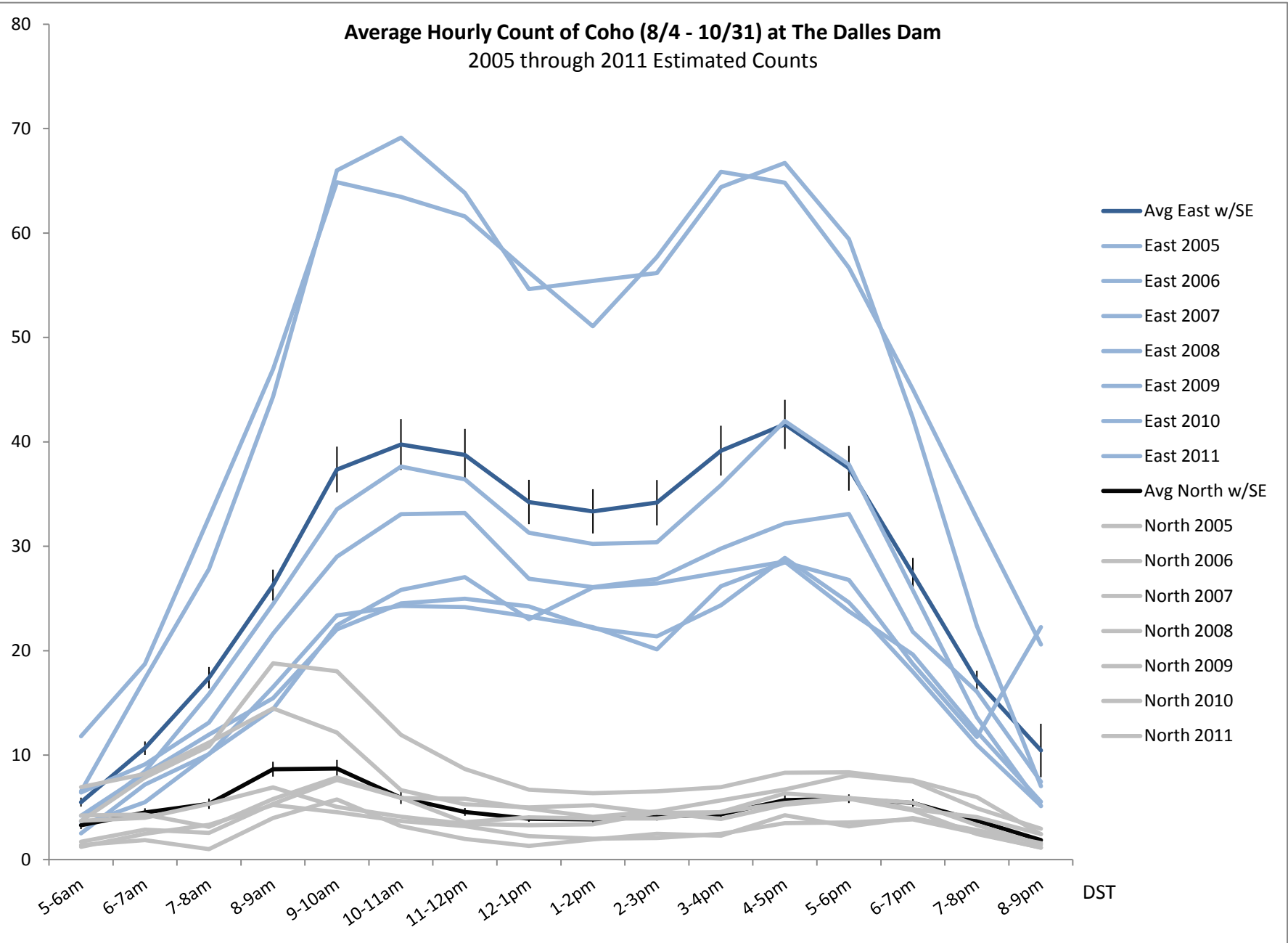
Weighted Average Hourly Count of Summer Steelhead (6/4 - 8/27) at The Dalles Dam
2005 through 2011 Estimated Counts



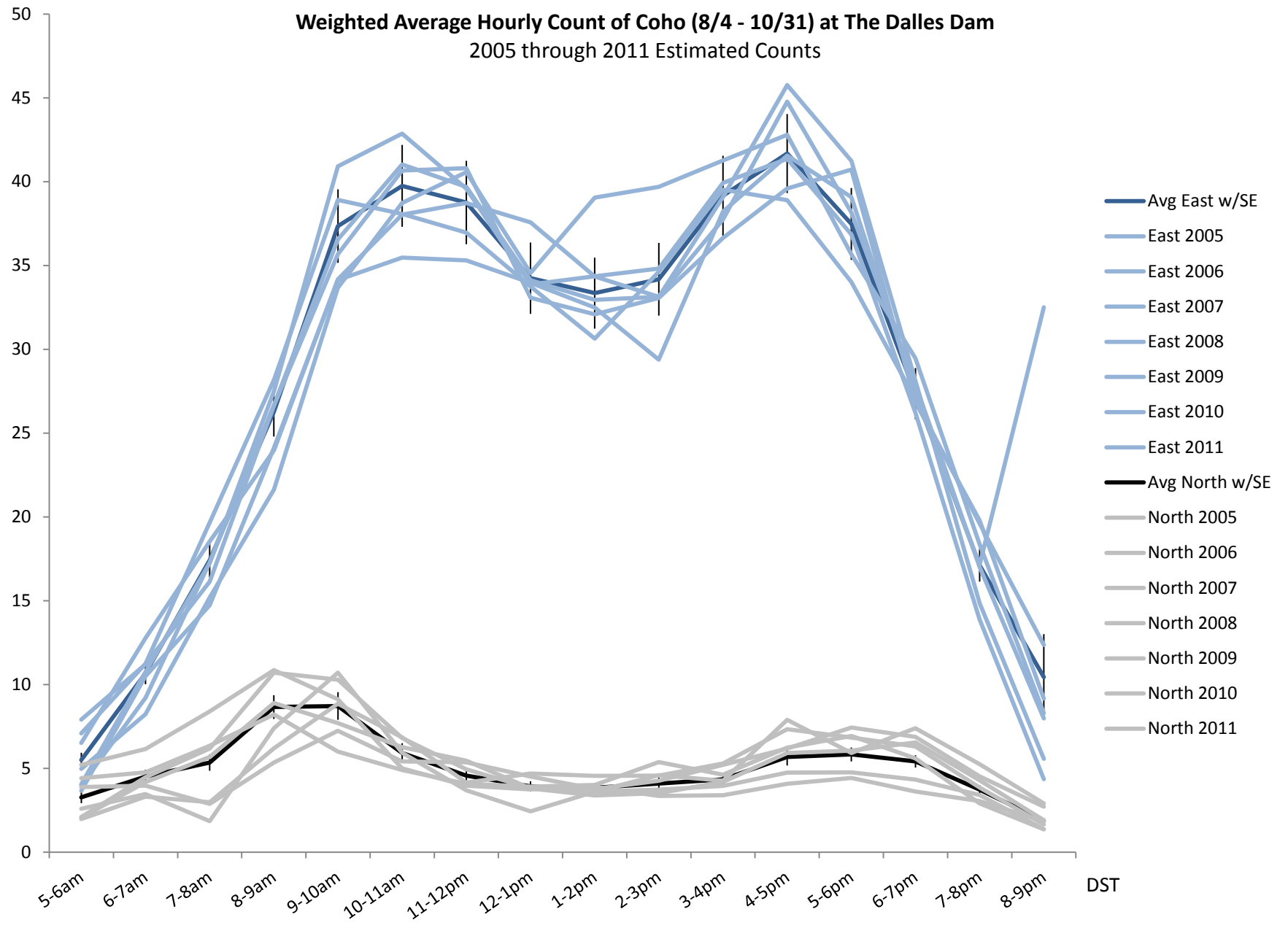
Weighted Average Hourly Count of B-Run Steelhead (8/28 - 10/31) at The Dalles Dam
2005 through 2011 Estimated Counts



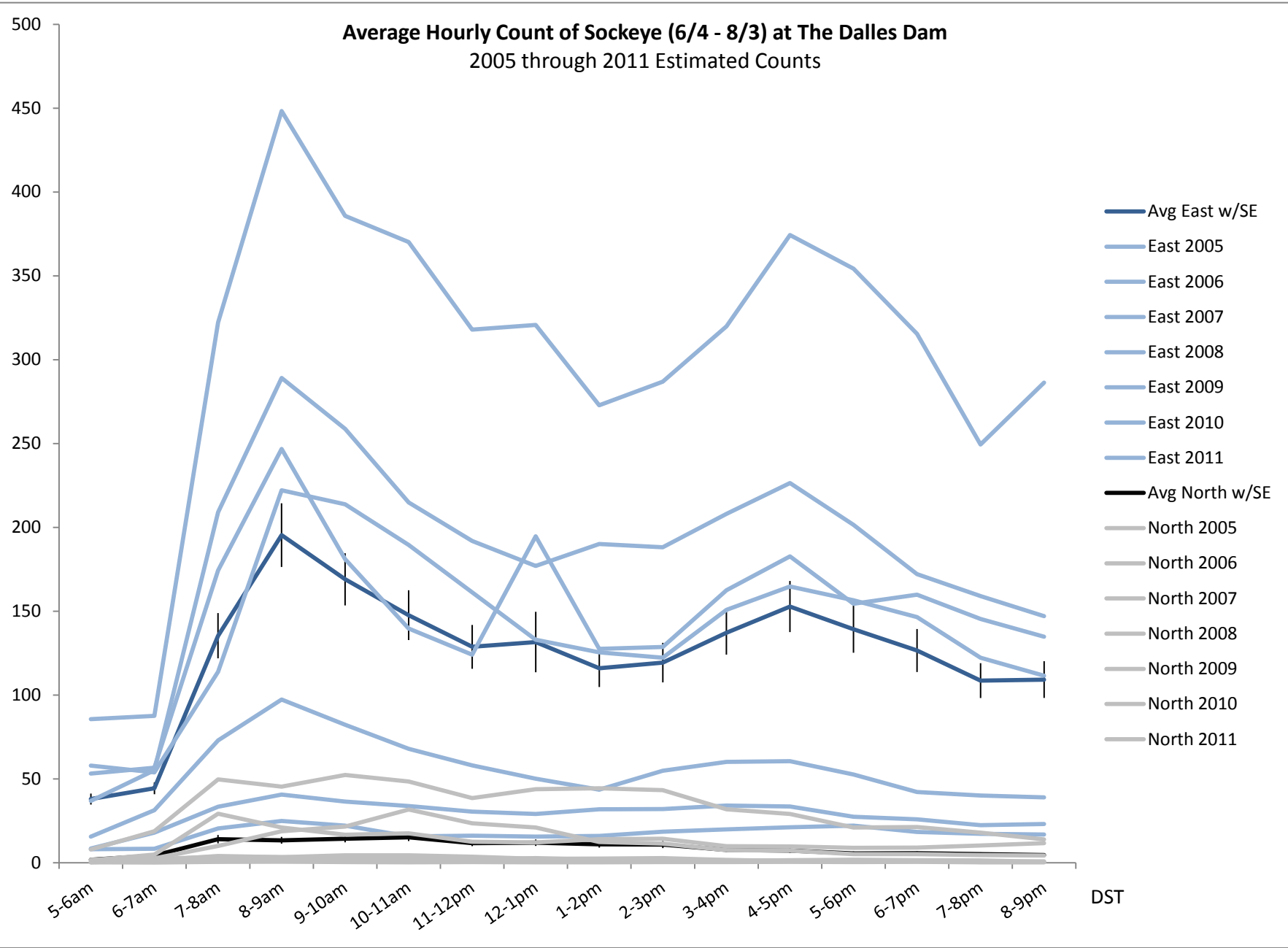
Average Hourly Count of Coho (8/4 - 10/31) at The Dalles Dam
 2005 through 2011 Estimated Counts



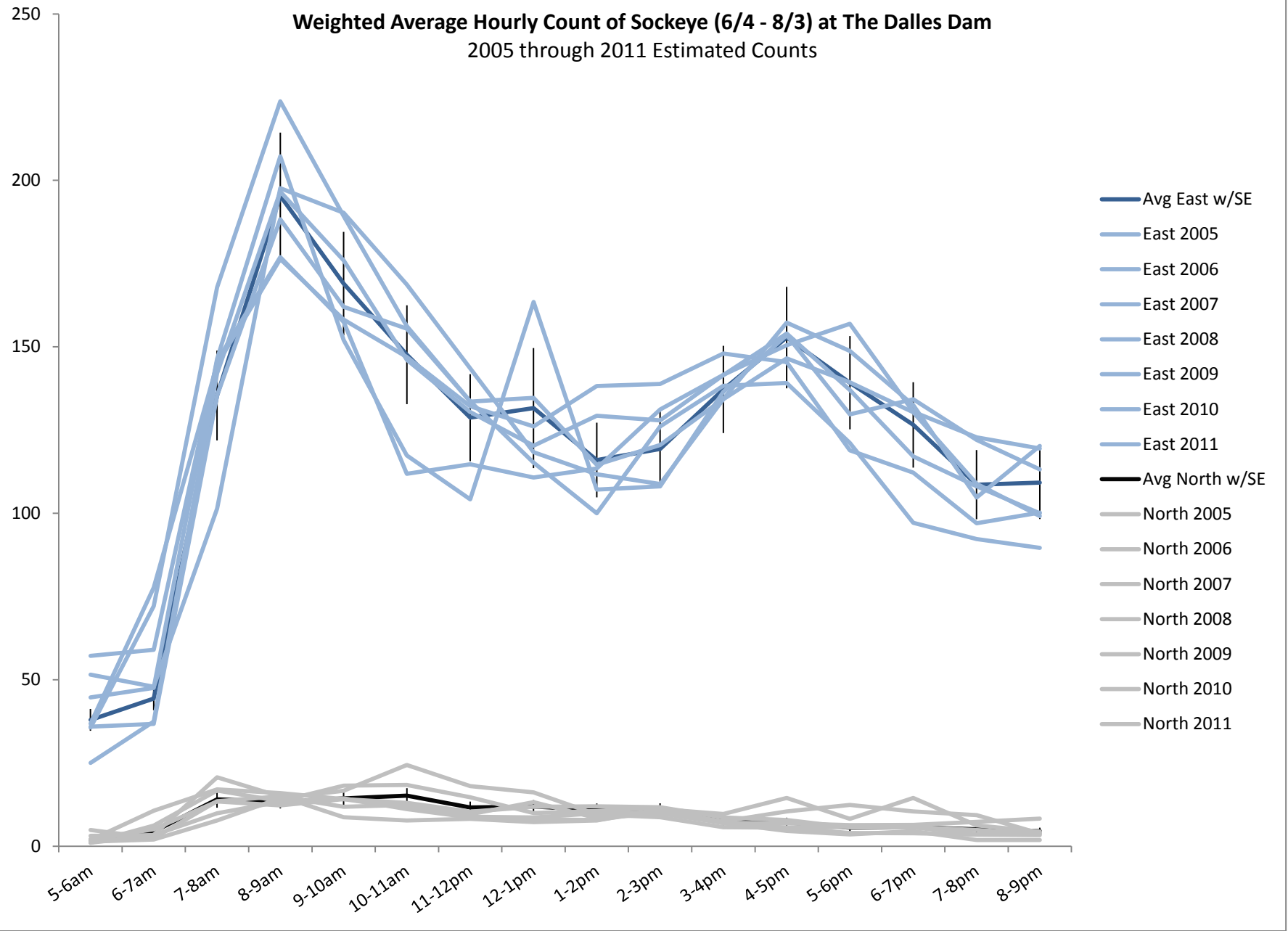
Weighted Average Hourly Count of Coho (8/4 - 10/31) at The Dalles Dam
2005 through 2011 Estimated Counts



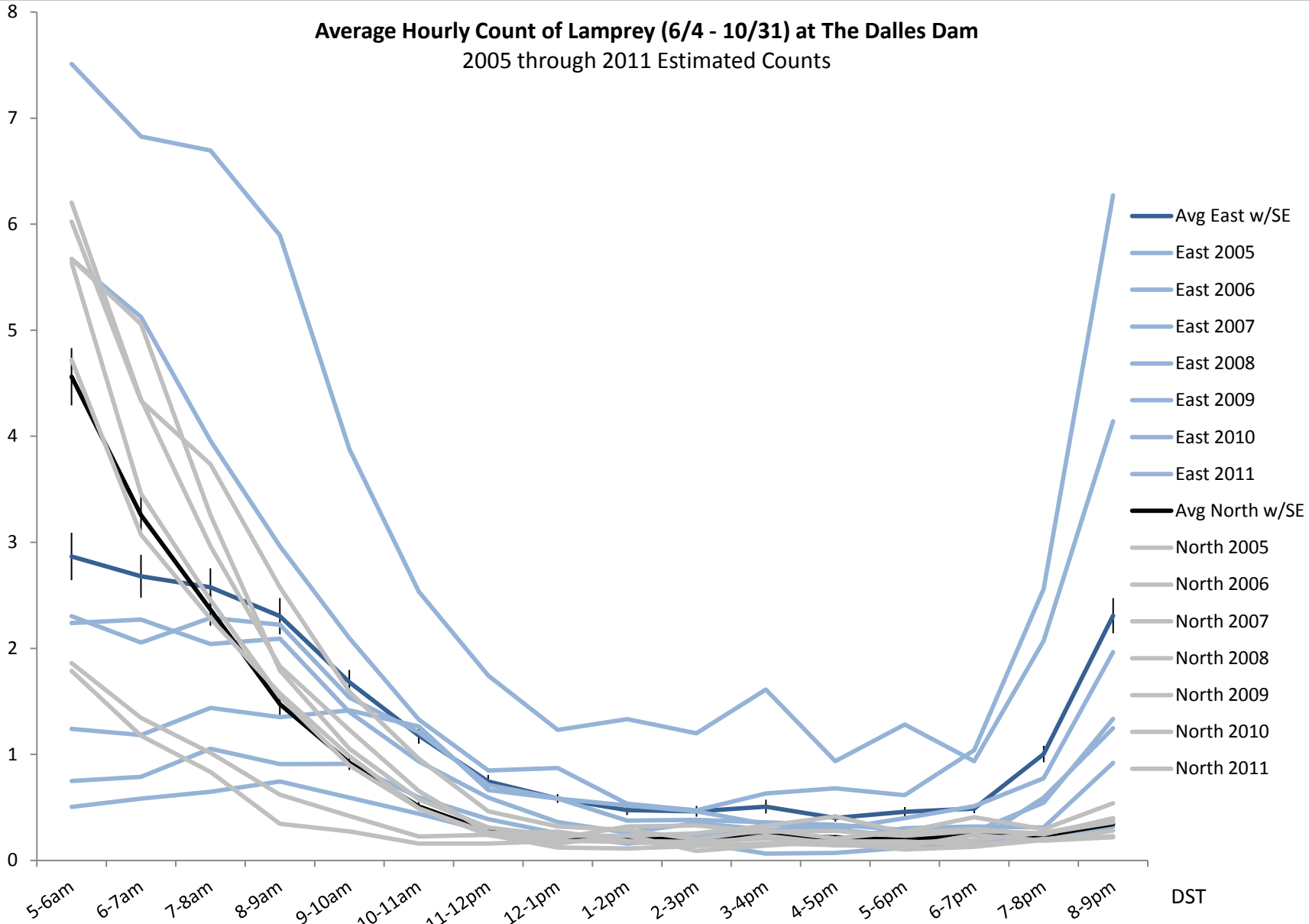
Average Hourly Count of Sockeye (6/4 - 8/3) at The Dalles Dam
 2005 through 2011 Estimated Counts



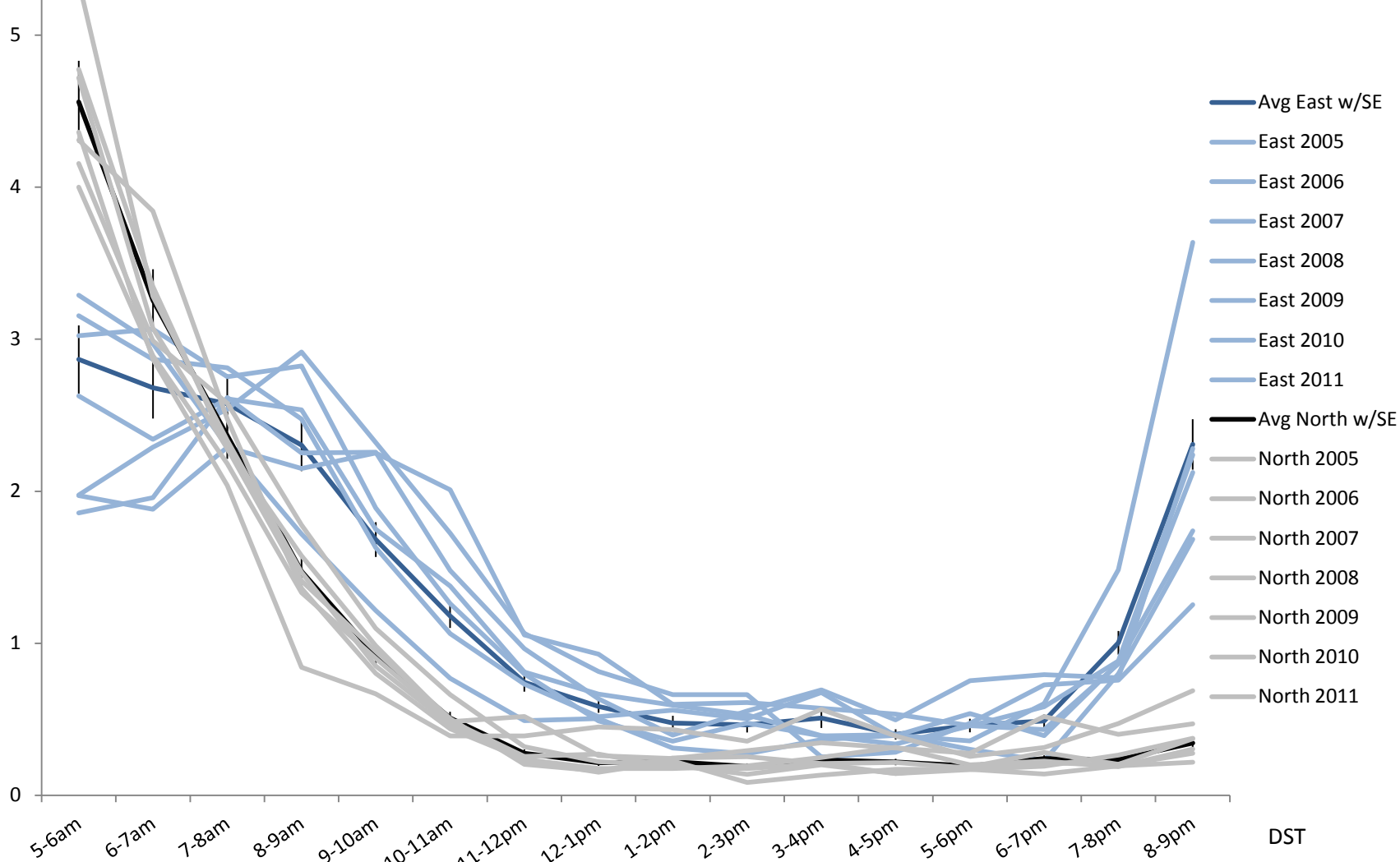
Weighted Average Hourly Count of Sockeye (6/4 - 8/3) at The Dalles Dam
 2005 through 2011 Estimated Counts



Average Hourly Count of Lamprey (6/4 - 10/31) at The Dalles Dam
2005 through 2011 Estimated Counts

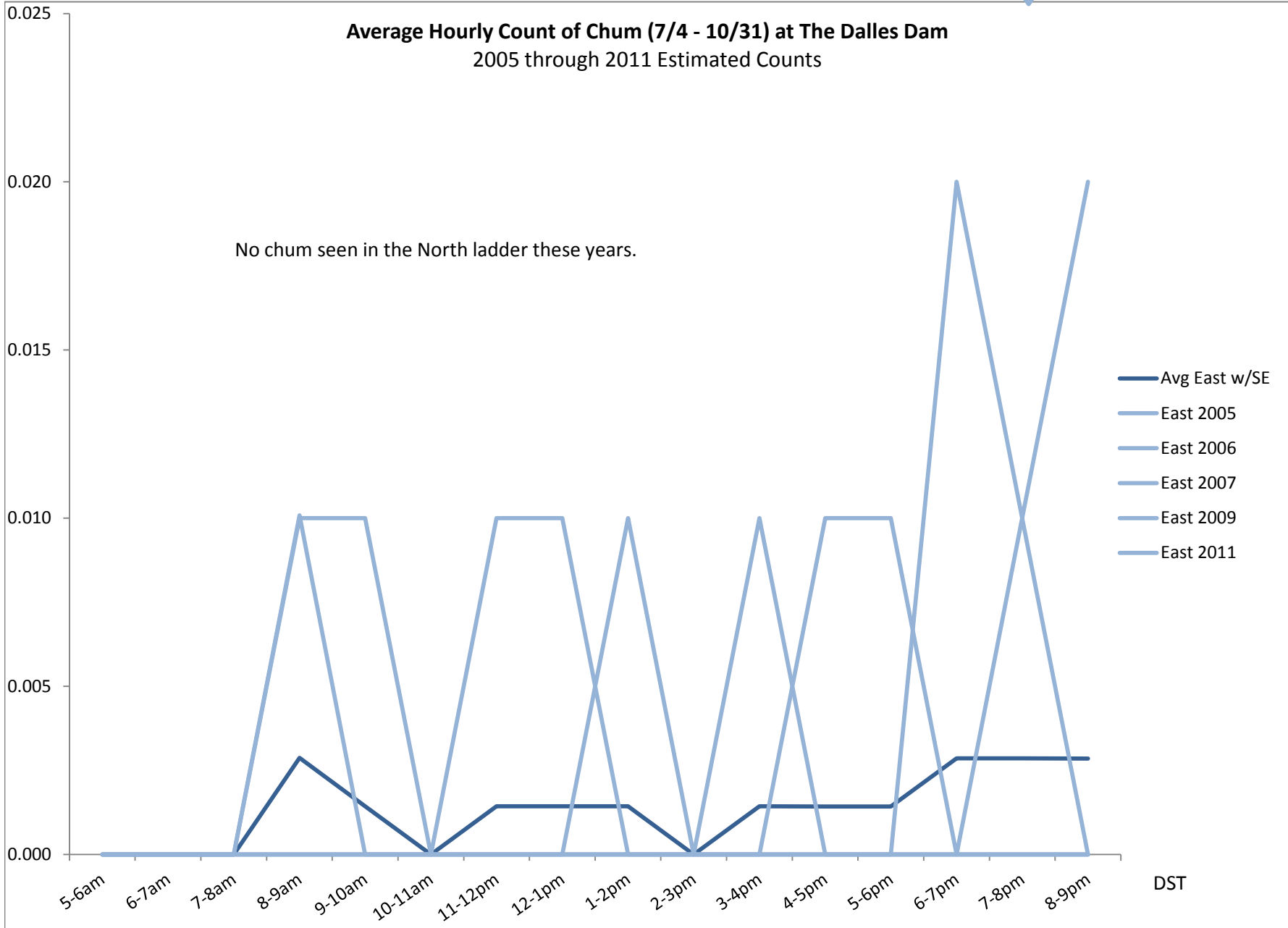


Weighted Average Hourly Count of Lamprey (6/4 - 10/31) at The Dalles Dam
2005 through 2011 Estimated Counts



Average Hourly Count of Chum (7/4 - 10/31) at The Dalles Dam
2005 through 2011 Estimated Counts

No chum seen in the North ladder these years.



Weighted Average Hourly Count of Chum (7/4 - 10/31) at The Dalles Dam
2005 through 2011 Estimated Counts

