





## Legend

-  Bypass Alignment
-  CokeButteImpacts



OREGON DEPARTMENT OF TRANSPORTATION

## Highway 62 Bypass Addendum

Coker Butte Overcrossing

DISCLAIMER:  
NOT TO SCALE



## OR62 - Wetland Impact Areas

Wetland X - New Impacts

Wetland X - Previously Permitted Impacts

Wetland X - Previously Permitted Impacts

Wetland X - New Impacts

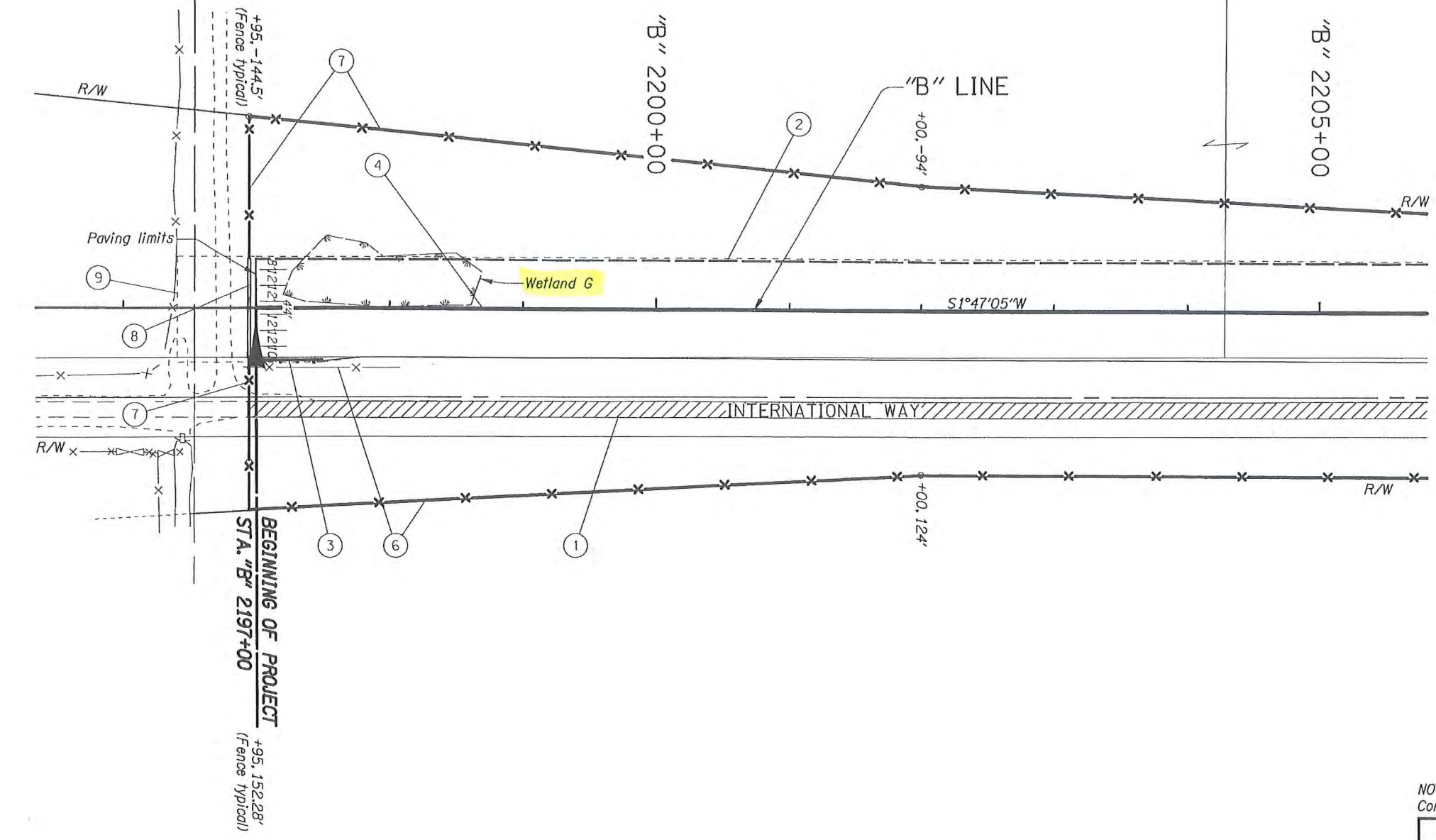
Wetland X - Previously Permitted Impacts

Lithia Mitigation site

Permanent Road Closure Barricade

11-13-2014





- ① Sta. "B" 2197+00 to Sta. "B" 2222+60, Rt.  
Contaminated soil removal - 6,720 cu. yds.  
(For details, see shfs. 2B-22 & 2B-23)
- ② Sta. "B" 2197+00 to Sta. "B" 2228+54.41, Lt.  
Const. low profile mountable curb - 3,750'  
(See drg. no. RD700, see detail shf. 2B-16)
- ③ Sta. "B" 2197+00 to Sta. "B" 2197+50, Rt.  
Const. guardrail - 50' (Type 2A)  
Const. anchor (Type 1 mod.)  
Inst. end piece (Type B)  
(See drg. nos. RD400, RD405 & RD415)
- ④ Sta. "B" 2197+00 to Sta. "B" 2237+51.83  
Const. tall conc. median barrier - 4,051.83'  
(See drg. nos. RD500, RD515, RD516 & RD545)
- ⑤ Note not used
- ⑥ Sta. "B" 2196+95 to Sta. "B" 2223+07, Rt.  
Remove extg. fence - 117'  
Const. type 2 fence - 2,614'
- ⑦ Sta. "B" 2196+95, to Sta. "B" 2228+56, Lt.  
Const. type CL-6R fence - 3,392'  
(See drg. no. RD815)
- ⑧ Sta. "B" 2196+95  
Const. conc. barrier - 75.5'
- ⑨ Sta. "B" 2196+40.6 to Sta. "B" 2197+00  
Const. gravel ramp

NOTE:  
Const. fencing 1' inside of R/W line or as directed.

**LEGEND**

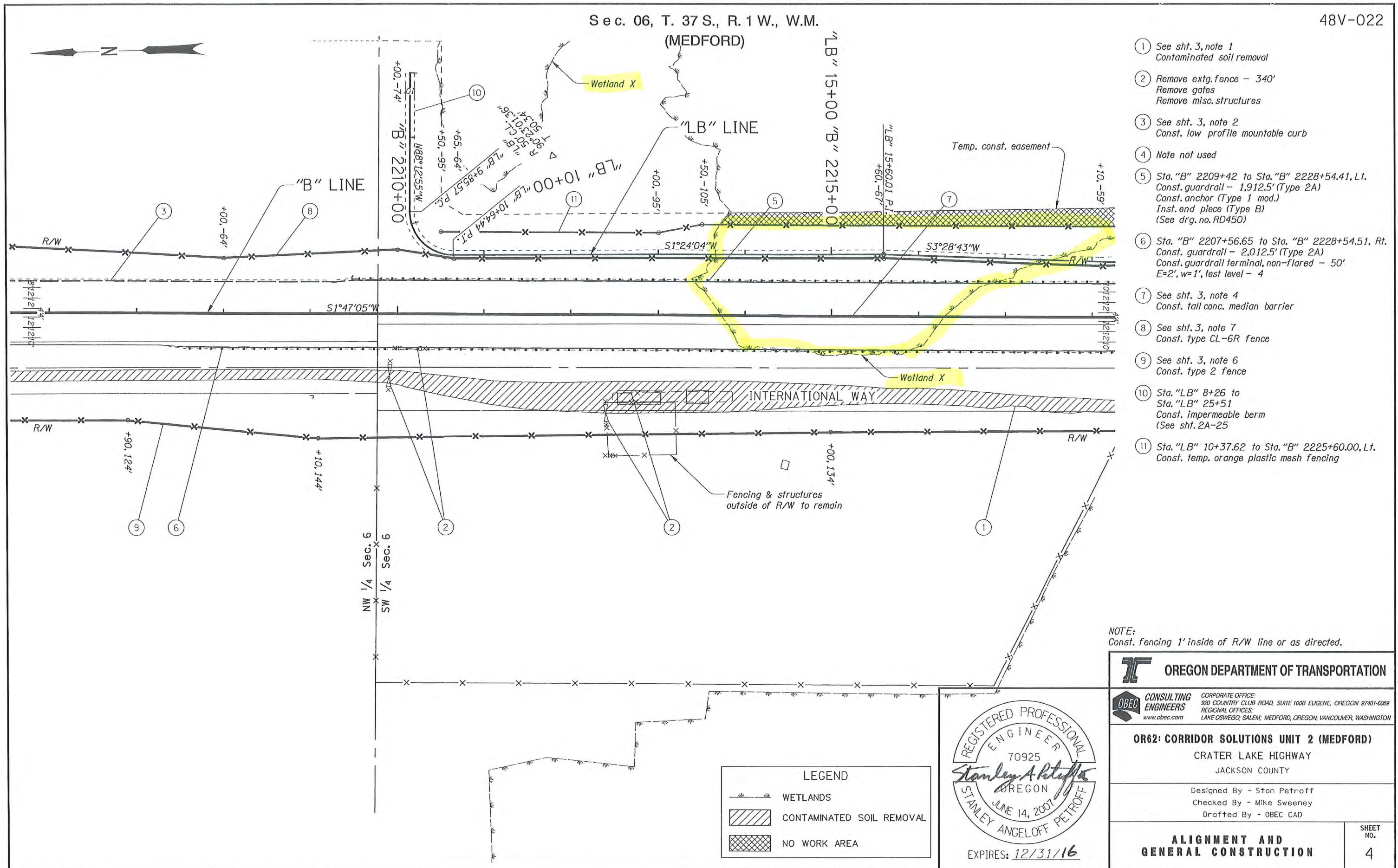
	WETLANDS
	CONTAMINATED SOIL REMOVAL

REGISTERED PROFESSIONAL  
ENGINEER  
70925  
*Stanley A. Petroff*  
OREGON  
JUNE 14, 2007  
STANLEY ANGELOFF PETROFF

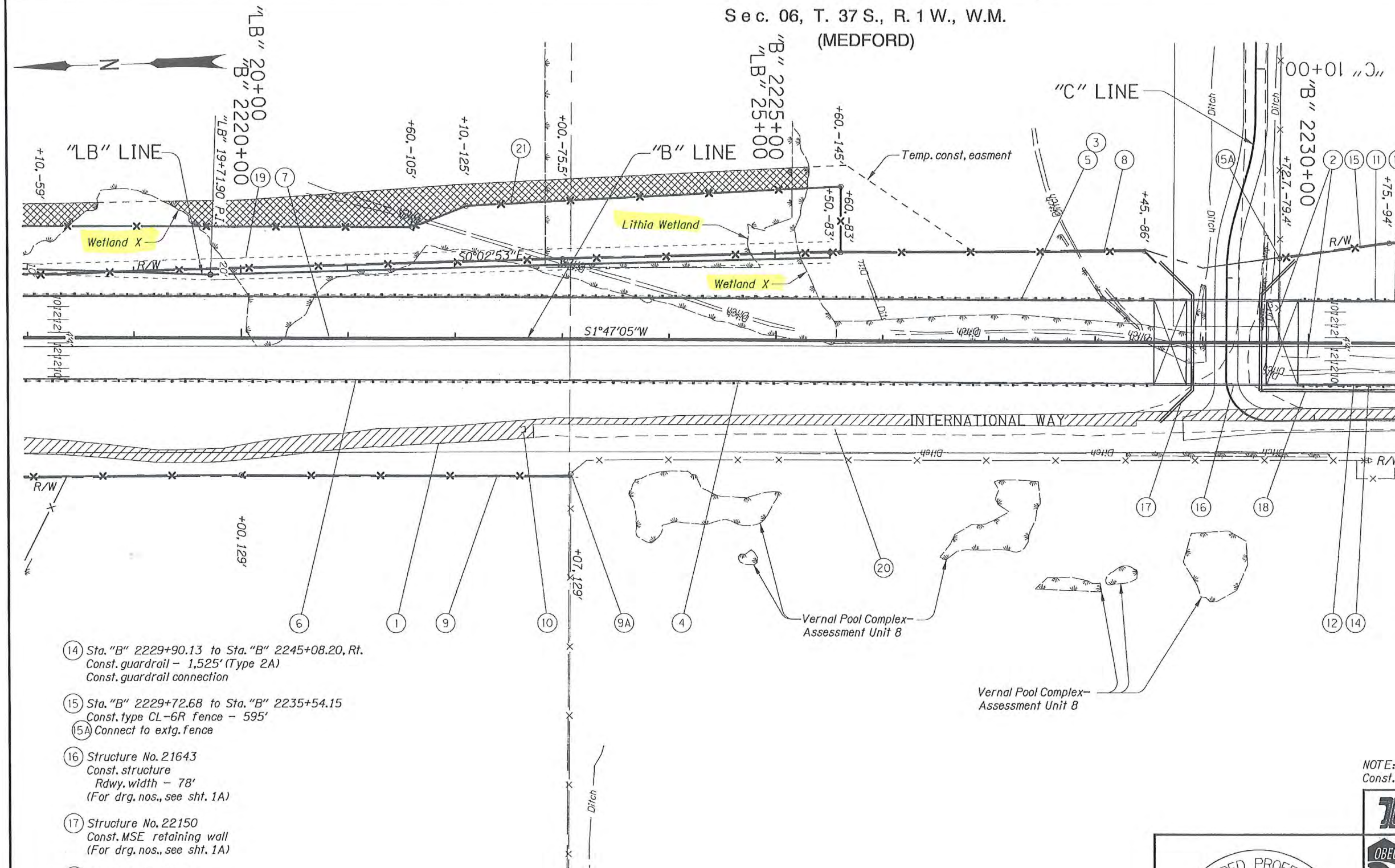
EXPIRES: 12/31/16

<b>OREGON DEPARTMENT OF TRANSPORTATION</b>	
<b>CONSULTING ENGINEERS</b> <small>www.obec.com</small>	
<small>CORPORATE OFFICE: 820 COUNTRY CLUB ROAD, SUITE 100B EUGENE, OREGON 97401-6089 REGIONAL OFFICES: LAKE OSWEGO, SALEM, MEDFORD, OREGON; VANCOUVER, WASHINGTON</small>	
<b>OR62: CORRIDOR SOLUTIONS UNIT 2 (MEDFORD)</b> CRATER LAKE HIGHWAY JACKSON COUNTY	
Designed By - Stan Petroff Checked By - Mike Sweeney Drafted By - OBEC CAD	
<b>ALIGNMENT AND GENERAL CONSTRUCTION</b>	SHEET NO. <b>3</b>





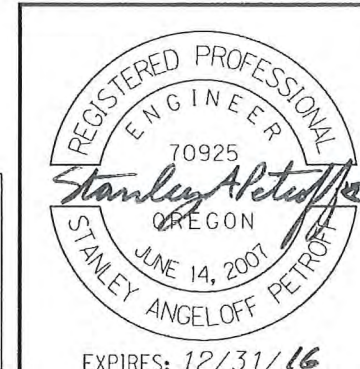




- 1 See sht. 3, note 1  
Contaminated soil removal
- 2 Sta. "B" 2229+74.50 to Sta. "B" 2231+85.50  
Remove extg. fence - 292'
- 3 See sht. 3, note 2  
Const. low profile mountable curb
- 4 Sta. "B" 2222+07 to Sta. "B" 2228+54.51, Rt.  
Const. low profile mountable curb - 648'
- 5 See sht. 4, note 5  
Const. guardrail (Type 2A)  
Const. guardrail connection  
(See drg. no. BR236)
- 6 See sht. 3, note 3  
Const. guardrail (Type 2A)  
Const. guardrail - 12.5' (Type 3)  
Const. guardrail transition  
(See drg. nos. RD410, RD440 & BR203)
- 7 See sht. 3, note 4  
Const. tall conc. median barrier
- 8 See sht. 3, note 7  
Const. type CL-6R fence
- 9 See sht. 3, note 6  
Const. type 2 fence  
9A Connect to extg. fence
- 10 Sta. "B" 2222+65, Rt.  
Inst. perm. road closure barricade  
(For details, see sht. 2B-21)
- 11 Sta. "B" 2229+90.13 to Sta. "B" 2237+49.87, Lt.  
Const. low profile mountable curb - 760'
- 12 Sta. "B" 2229+90.13 to Sta. "B" 2240+00, Rt.  
Const. low profile mountable curb - 1,011'
- 13 Sta. "B" 2229+90.13 to Sta. "B" 2245+01.70, Lt.  
Const. guardrail - 1,425' (Type 2A)  
Const. guardrail - 12.5' (Type 3)  
Const. guardrail transition

- 14 Sta. "B" 2229+90.13 to Sta. "B" 2245+08.20, Rt.  
Const. guardrail - 1,525' (Type 2A)  
Const. guardrail connection
- 15 Sta. "B" 2229+72.68 to Sta. "B" 2235+54.15  
Const. type CL-6R fence - 595'  
15A Connect to extg. fence
- 16 Structure No. 21643  
Const. structure  
Rdwy. width - 78'  
(For drg. nos., see sht. 1A)
- 17 Structure No. 22150  
Const. MSE retaining wall  
(For drg. nos., see sht. 1A)
- 18 Structure No. 22151  
Const. MSE retaining wall  
(For drg. nos., see sht. 1A)
- 19 See sht. 4, note 10  
Const. impermeable berm
- 20 Sta. "B" 2222+75.00 to  
Sta. "B" 2228+82.00, Rt.  
Protect International Way
- 21 See sht. 4, note 11  
Const. temp. orange plastic mesh fence

LEGEND	
	WETLANDS
	CONTAMINATED SOIL REMOVAL
	NO WORK AREA



NOTE:  
Const. fencing 1' inside of R/W line or as directed.

**OREGON DEPARTMENT OF TRANSPORTATION**

**OBEC CONSULTING ENGINEERS**  
CORPORATE OFFICE:  
320 COUNTRY CLUB ROAD, SUITE 100B EUGENE, OREGON 97401-6089  
REGIONAL OFFICES:  
LAKE OSWEGO, SALEM, MEDFORD, OREGON; VANCOUVER, WASHINGTON  
www.obec.com

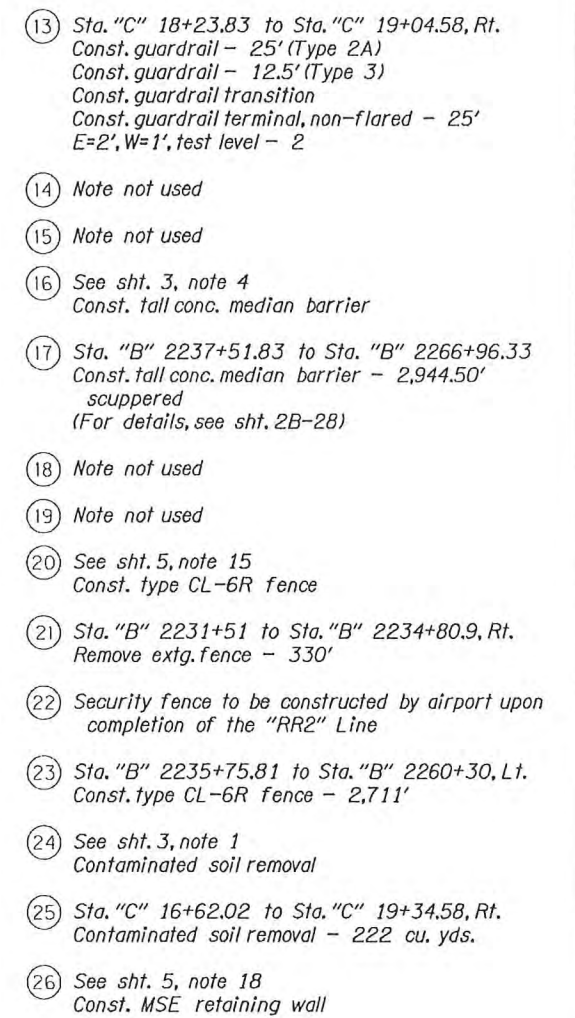
**OR62: CORRIDOR SOLUTIONS UNIT 2 (MEDFORD)**  
CRATER LAKE HIGHWAY  
JACKSON COUNTY

Designed By - Stan Petroff  
Checked By - Mike Sweeney  
Drafted By - OBEC CAD

**ALIGNMENT AND  
GENERAL CONSTRUCTION**

SHEET NO.  
**5**





**OREGON DEPARTMENT OF TRANSPORTATION**

**OBEC CONSULTING ENGINEERS**  
 www.obec.com

*CORPORATE OFFICE:  
 920 COUNTRY CLUB ROAD, SUITE 100B EUGENE, OREGON 97401-6089*

*REGIONAL OFFICES:  
 LAKE OSWEGO, SALEM, MEDFORD, OREGON; VANCOUVER, WASHINGTON*

Designed By - Stan Petroff  
Checked By - Mike Sweeney  
Drafted By - OBEC CAD

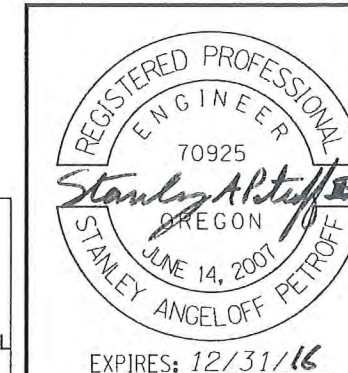
SHEET  
NO.  
6

**LEGEND**

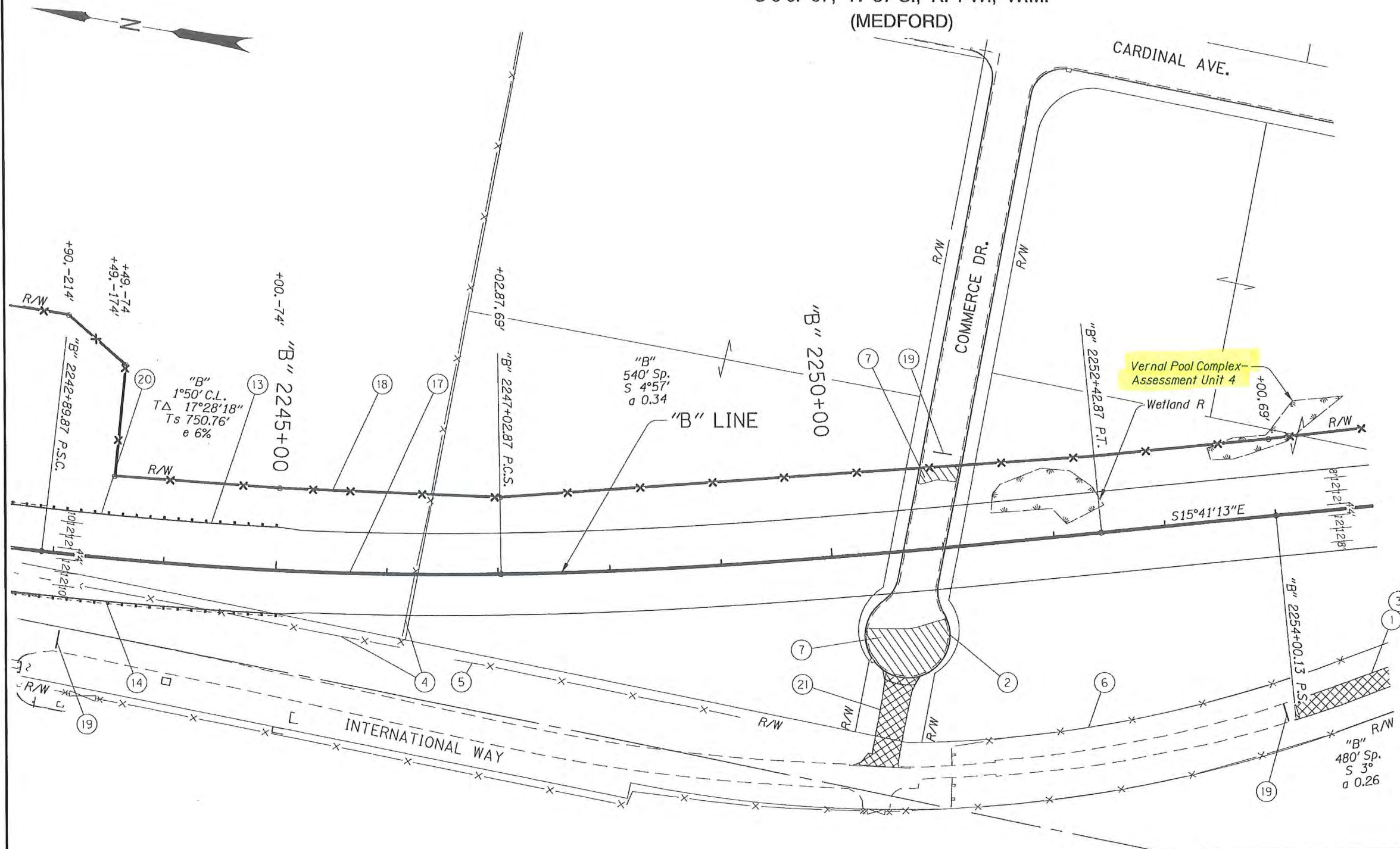
 WETLANDS

 REGULATED WORK AREA

 CONTAMINATED SOIL REMOVAL





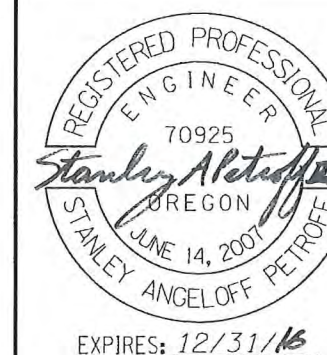


- 1 Sta. "B" 2254+00 to Sta. "B" 24+00, Rt. Contaminated soil removal - 1,358 cu.yd. (For details, see shfs. 2B-22 & 2B-23)
- 2 Sta. "B" 2250+24 to Sta. "B" 2250+99 Removal of curbs - 440'
- 3 Sta. "B" 2254+00 to Sta. "B" 2257+53, Rt. Removal of surfacings - 602 sq. yd.
- 4 See shf. 6, note 2 Remove extg. fence
- 5 Sta. "B" 2246+61 to Sta. 2249+08, Rt. Remove extg. fence - 261'
- 6 Sta. "B" 2250+94 to Sta. "B" 2286+32, Rt. Remove extg. fence - 3,618'
- 7 Sta. "B" 2250+04 to Sta. "B" 2250+97 Removal of surfacings - 591 sq. yd.
- 8 Note not used
- 9 Note not used
- 10 Note not used
- 11 Note not used
- 12 Note not used
- 13 See shf. 6, note 13 Const. guardrail (Type 2A) Const. guardrail terminal, non-flared - 50' E=2', W=1', test level - 4 (See drg. no. RD420)
- 14 See shf. 6, note 14 Const. guardrail (Type 2A) Const. anchor (Type 1 mod.) Inst. end piece (Type B) (See drg. no. RD450)

NOTE:  
Const. fencing 1' inside of R/W line or as directed.

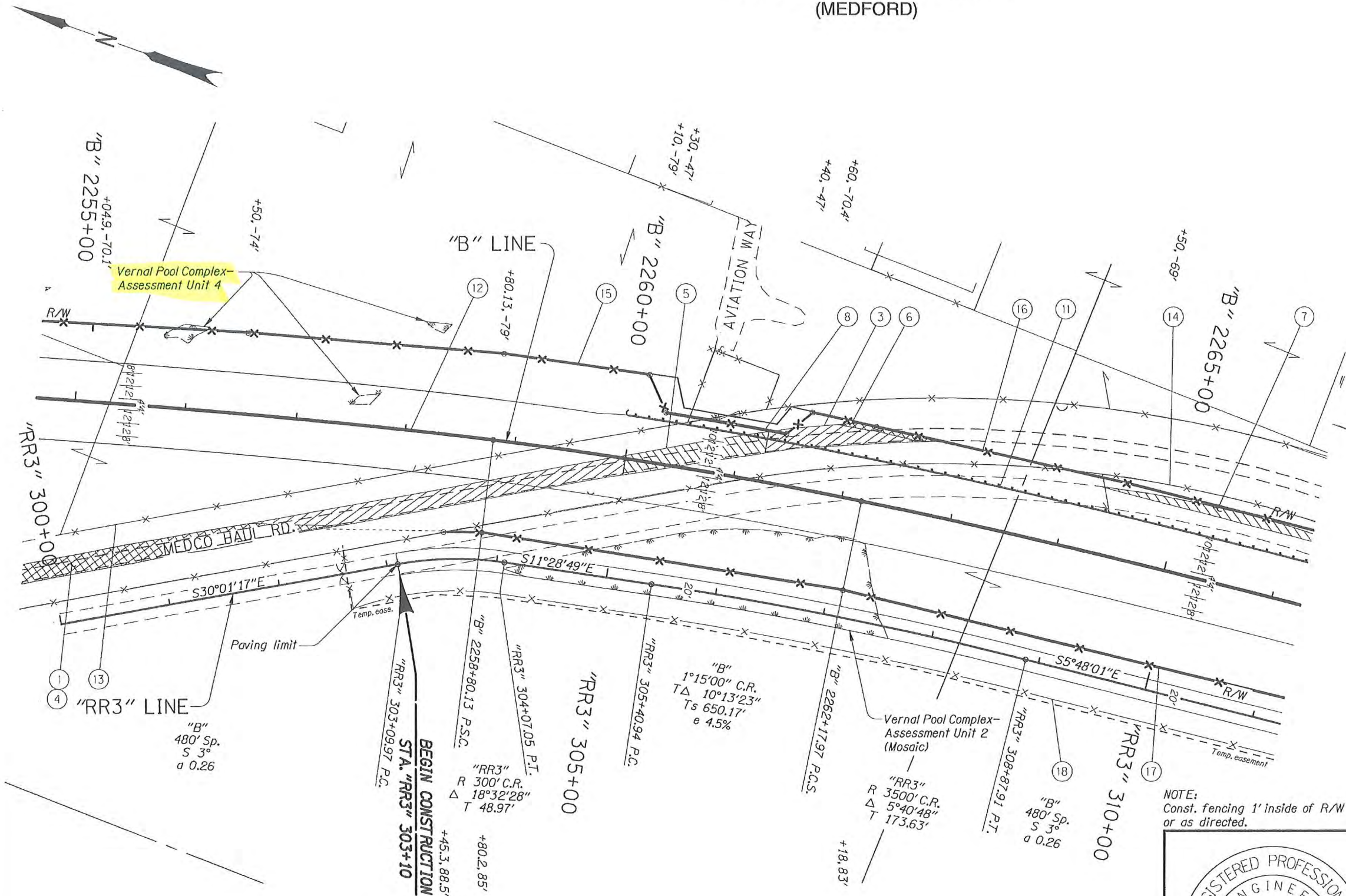
- 15 Note not used
- 16 Note not used
- 17 See shf. 6, note 17 Const. tall conc. median barrier, scuppered
- 18 See shf. 6, note 23 Const. type CL-6R fence
- 19 Sta. "B" 2243+00, Rt. Sta. "B" 2253+95, Rt. Sta. "B" 2251+04, Lt. Inst. permanent road closure barricade - 3 (For details, see shf. 2B-21)
- 20 See shf. 5, note 13 Const. guardrail (Type 2A) Sta. "B" 2243+35, Lt. Const. modified Type 2A guardrail maintenance access (See drg. no. RD470 & detail shf. 2B13)
- 21 Sta. "B" 2250+50, Rt. Contaminated soil removal - 88 cu. yd.

LEGEND	
	WETLANDS
	CONTAMINATED SOIL REMOVAL
	REMOVAL OF SURFACINGS & CONTAMINATED SOIL REMOVAL
	REMOVAL OF SURFACINGS



<b>OREGON DEPARTMENT OF TRANSPORTATION</b>	
<b>OBEC CONSULTING ENGINEERS</b> <small>www.obec.com</small>	<small>CORPORATE OFFICE:            920 COUNTRY CLUB ROAD, SUITE 100B EUGENE, OREGON 97401-6089            REGIONAL OFFICES:            LAKE OSWEGO; SALEM; MEDFORD, OREGON; VANCOUVER, WASHINGTON</small>
<b>OR62: CORRIDOR SOLUTIONS UNIT 2 (MEDFORD)</b> CRATER LAKE HIGHWAY JACKSON COUNTY	
Designed By - Stan Petroff Checked By - Mike Sweeney Drafted By - OBEC CAD	
<b>ALIGNMENT AND GENERAL CONSTRUCTION</b>	SHEET NO. <b>7</b>





- ⑦ Sta. "B" 2264+30 to Sta. "B" 2266+90, Lt.  
Removal of surfacings - 182 sq. yds.
- ⑧ Structure no. 21648  
Sta. "B" 2260+30 to Sta. "B" 2261+40, Lt.  
Const. retaining wall  
Const. type CL-4R fencing - 112'  
(For drg. nos, see sht. 1A)
- ⑨ Note not used
- ⑩ Note not used
- ⑪ Sta. "B" 2259+97 to Sta. "B" 2282+77, Lt.  
Const. guardrail - 2,250' (Type 2A)  
Const. anchor (Type 1 mod.)  
Inst. end piece (Type B)
- ⑫ See sht. 6, note 17  
Const. tall conc. median barrier, scuppered
- ⑬ See sht. 7, note 6  
Remove extg. fence
- ⑭ Sta. "B" 2258+45 to Sta. "B" 2277+56, Rt.  
Remove extg. fence - 1,947'
- ⑮ See sht. 6, note 23  
Const. type CL-6R
- ⑯ Sta. "B" 2261+40 to Sta. "B" 2273+47, Lt.  
Const. type CL-6R fence - 1,223'
- ⑰ Security fence to be constructed by airport upon  
completion of "RR3" Line
- ⑱ Temp. security fence to be installed by airport

- ① See sht. 7, note 1  
Contaminated soil removal
- ② Note not used
- ③ Sta. "B" 2261+24.09 to Sta. "B" 2262+81.70  
Contaminated soil removal - 306 cu. yds.
- ④ See sht. 7, note 3  
Removal of surfacings
- ⑤ Sta. "B" 2260+00 to Sta. "B" 2261+25  
Removal of surfacings - 268 sq. yds.
- ⑥ Sta. "B" 2261+83.54 to Sta. "B" 2262+81.70, Lt.  
Removal of surfacings - 45 sq. yds.

**LEGEND**

	WETLANDS
	REMOVAL OF SURFACINGS
	REMOVAL OF SURFACINGS & CONTAMINATED SOIL REMOVAL
	CONTAMINATED SOIL REMOVAL

NOTE:  
Const. fencing 1' inside of R/W line  
or as directed.

REGISTERED PROFESSIONAL  
ENGINEER  
70925  
*Stanley A. Petroff*  
JUNE 14, 2007  
ANGELOFF PETROFF

EXPIRES: 12/31/16

**OREGON DEPARTMENT OF TRANSPORTATION**

**CONSULTING ENGINEERS**  
CORPORATE OFFICE:  
920 COUNTRY CLUB ROAD, SUITE 100B EUGENE, OREGON 97401-6089  
REGIONAL OFFICES:  
LAKE OSWEGO, SALEM, MEDFORD, OREGON; VANCOUVER, WASHINGTON

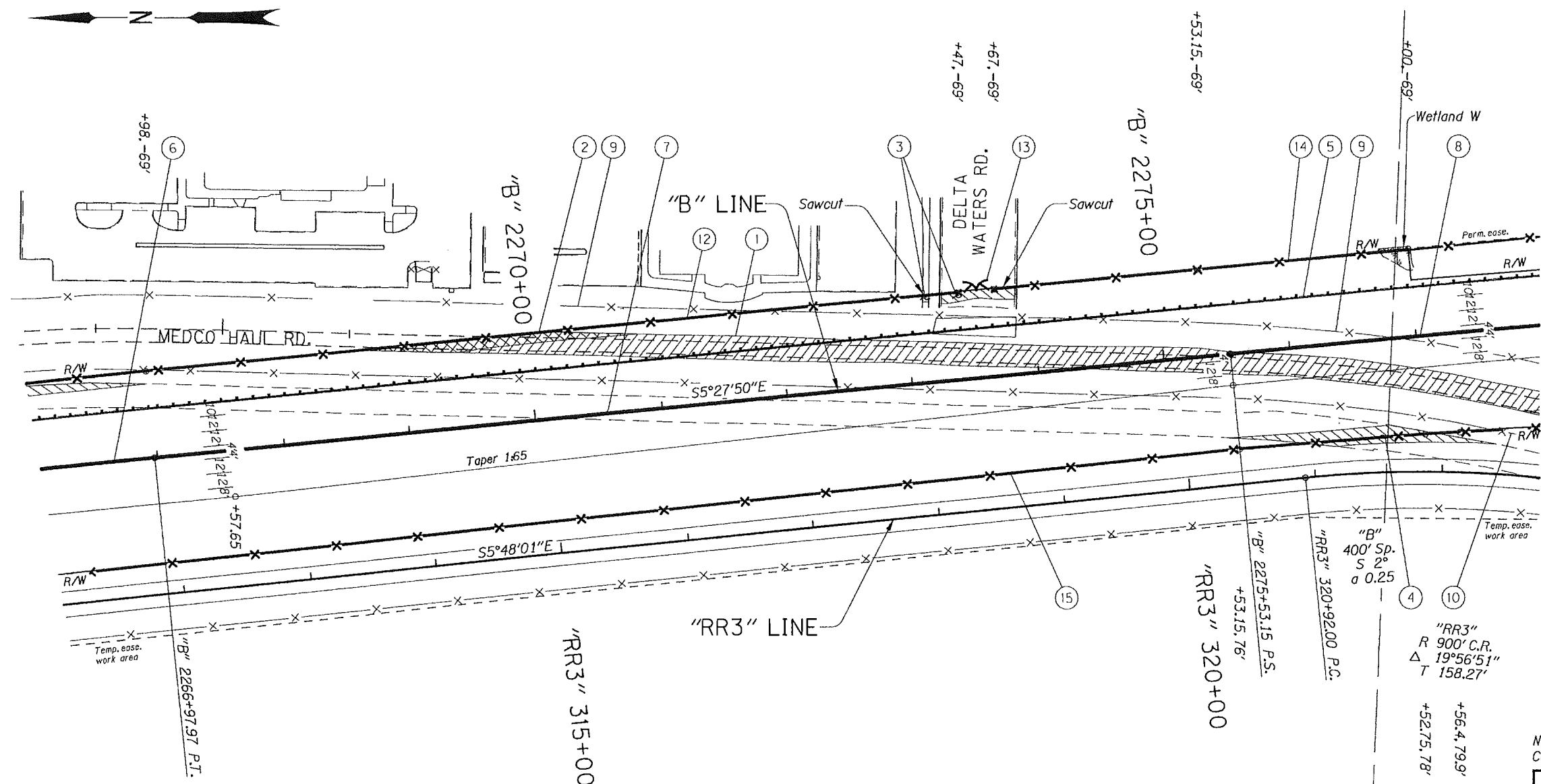
**OR62: CORRIDOR SOLUTIONS UNIT 2 (MEDFORD)**  
CRATER LAKE HIGHWAY  
JACKSON COUNTY

Designed By - Stan Petroff  
Checked By - Mike Sweeney  
Drafted By - OBEC CAD

**ALIGNMENT AND  
GENERAL CONSTRUCTION**

SHEET  
NO.  
**8**

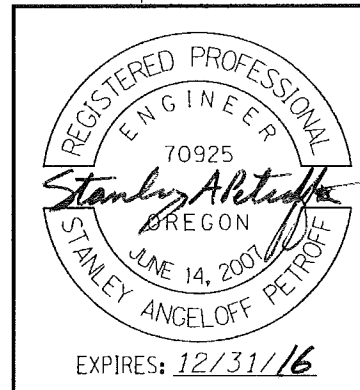




- ① Sta. "B" 2268+61.30 to Sta. "B" 2278+97.34  
Contaminated soil removal - 2,218 cu. yds.
- ② Sta. "B" 2268+61.30 to Sta. "B" 2270+87.26  
Removal of surfacings - 150 sq. yds.
- ③ Sta. "B" 2273+14 to Sta. "B" 2273+87, Lt.  
Removal of surfacings - 57 sq. yds.
- ④ Sta. "B" 2275+44 to Sta. "B" 2277+56, Rt.  
Removal of surfacings - 178 sq. yds.
- ⑤ See sht. 8, note 11  
Const. guardrail (Type 2A)
- ⑥ See sht. 6, note 17  
Const. tall conc. median barrier, scuppered
- ⑦ Sta. "B" 2266+96.33 to Sta. "B" 2275+52.00  
Const. tall conc. median barrier - 855.67'
- ⑧ Sta. "B" 2275+52.00 to Sta. "NB" 20+47.22  
Const. tall conc. median barrier - 1,170.22'  
scuppered  
(For details, see sht. 2B-28)
- ⑨ See sht. 7, note 6  
Remove extg. fence
- ⑩ See sht. 8, note 14  
Remove extg. fence
- ⑪ Note not used
- ⑫ See sht. 8, note 16  
Const. type CL-6R fence
- ⑬ Sta. "B" 2273+57, Lt.  
Inst. 20' double gate
- ⑭ Sta. "B" 2273+67 to Sta. "B" 2282+77, Lt.  
Const. type CL-6R fence - 942'
- ⑮ See sht. 8, note 17  
Security fence to be constructed by airport upon  
completion of "RR3" Line

NOTE:  
Const. fencing 1' inside of R/W line or as directed.

LEGEND	
	CONTAMINATED SOIL REMOVAL
	REMOVAL OF SURFACINGS & CONTAMINATED SOIL REMOVAL
	REMOVAL OF SURFACINGS

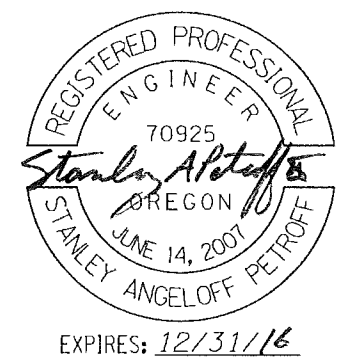
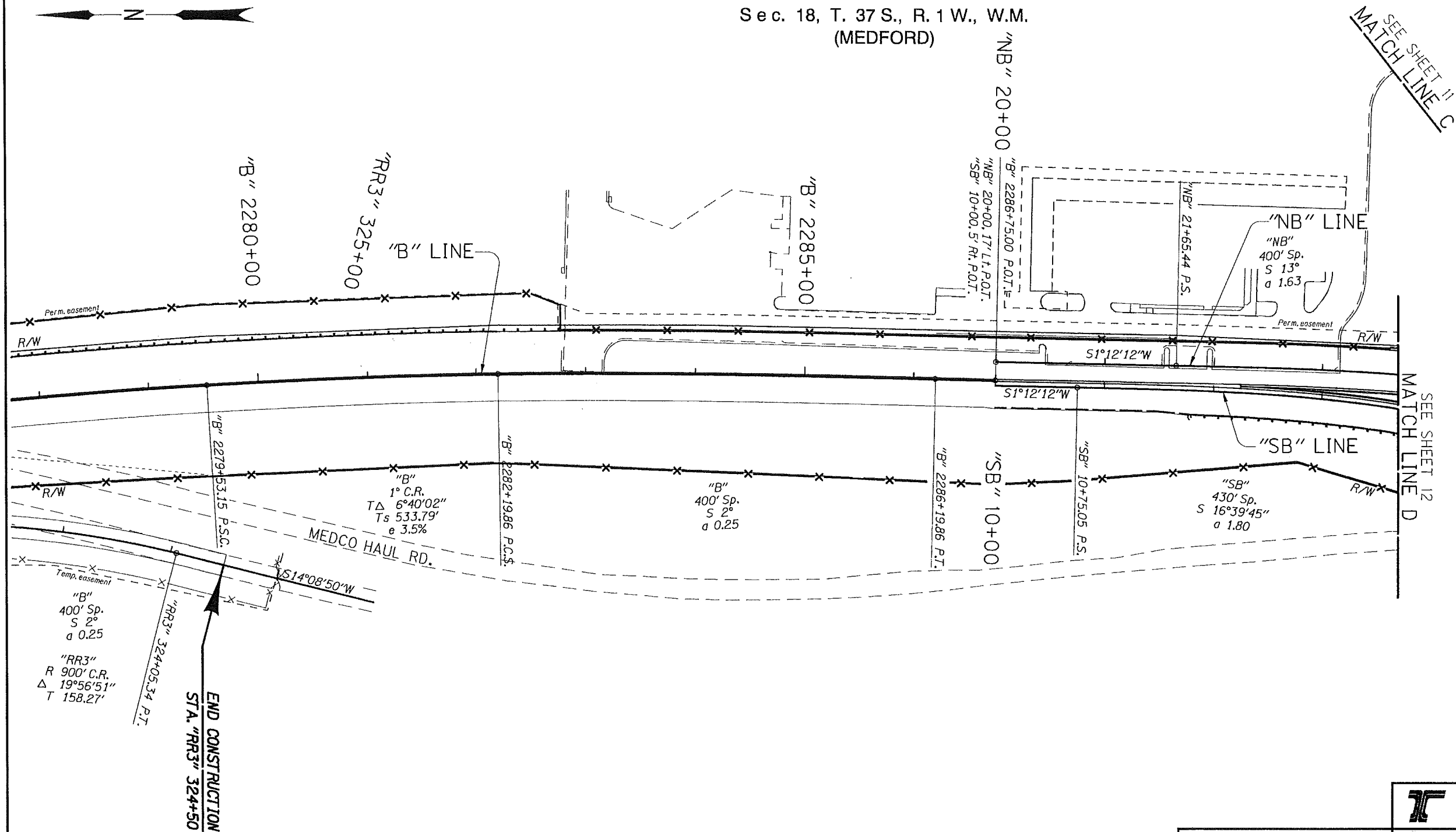




<b>OREGON DEPARTMENT OF TRANSPORTATION</b>	
<b>OBEC CONSULTING ENGINEERS</b> <small>www.obec.com</small>	
<small>CORPORATE OFFICE: 920 COUNTRY CLUB ROAD, SUITE 100B EUGENE, OREGON 97401-6089 REGIONAL OFFICES: LAKE OSWEGO, SALEM, MEDFORD, OREGON, VANCOUVER, WASHINGTON</small>	
<b>OR62: CORRIDOR SOLUTIONS UNIT 2 (MEDFORD)</b> CRATER LAKE HIGHWAY JACKSON COUNTY	
Designed By - Stan Petroff Checked By - Mike Sweeney Drafted By - OBEC CAD	
<b>ALIGNMENT AND GENERAL CONSTRUCTION</b>	SHEET NO. <b>9</b>



Sec. 07, T. 37 S., R. 1 W., W.M.  
Sec. 18, T. 37 S., R. 1 W., W.M.  
(MEDFORD)

48V-022

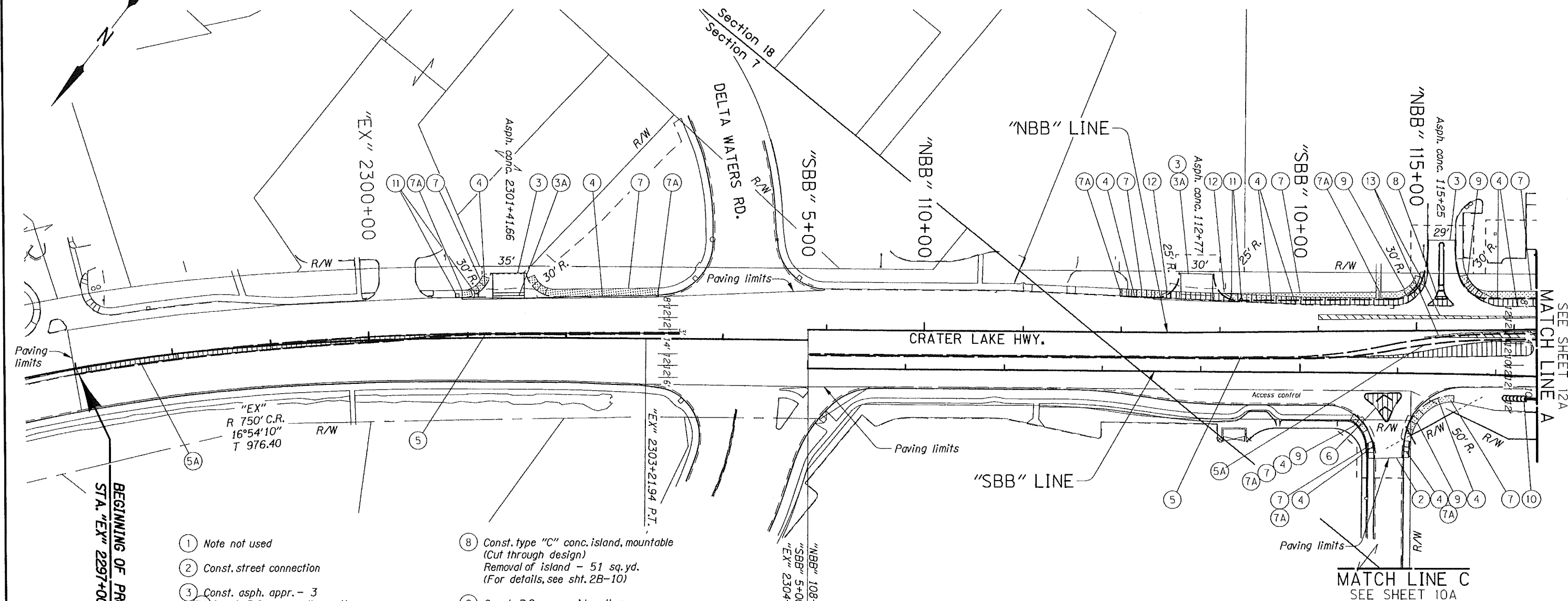


 OREGON DEPARTMENT OF TRANSPORTATION	
 OBEC CONSULTING ENGINEERS CORPORATE OFFICE: 820 COUNTRY CLUB ROAD, SUITE 100B EUGENE, OREGON 97401-6089 REGIONAL OFFICES: LAKE OSWEGO, SALEM, MEDFORD, OREGON, VANCOUVER, WASHINGTON	
OR62: CORRIDOR SOLUTIONS UNIT 2 (MEDFORD) CRATER LAKE HIGHWAY JACKSON COUNTY	
Designed By - Stan Petroff Checked By - Mike Sweeney Drafted By - OBEC CAD	
ALIGNMENT PLAN	SHEET NO. 10

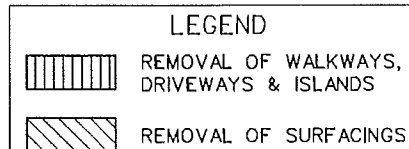


Sec. 07, T. 37 S., R. 1 W., W.M.  
Sec. 18, T. 37 S., R. 1 W., W.M.  
(MEDFORD)

48V-022



- ① Note not used
- ② Const. street connection
- ③ Const. asph. apr. - 3
- ③A Const. P.C. conc. valley gutter  
(For details, see sht. 2B-13)  
(See drg. no. RD715)
- ④ Const. curb and gutter  
Remove extg. curb
- ⑤ Const. type "C" conc. traffic separator
- ⑤A Const. type "C" conc. island, mountable  
Removal of island - 540 sq. yd.  
(See drg. nos. RD705 & RD706)
- ⑥ Const. type "C" conc. island, mountable  
(Cut through design)  
Removal of island - 66 sq. yd.  
(For details, see sht. 2B-8)  
(See drg. no. RD710)
- ⑦ Const. P.C. conc. sidewalk  
Remove extg. sidewalk
- ⑦A Match extg. sidewalk - 5  
(See drg. no. RD720)
- ⑧ Const. type "C" conc. island, mountable  
(Cut through design)  
Removal of island - 51 sq. yd.  
(For details, see sht. 2B-10)
- ⑨ Const. P.C. conc. sidewalk ramp,  
option K - 4  
(See drg. nos. RD755, RD757 & RD759)
- ⑩ Sta. "SBB" 12+31.80 Rt.  
Const. impact attenuator, type "L"  
(For details, see sht. 2B-7)
- ⑪ Remove and reinstall mailbox support - 2  
(See drg. nos. RD100 & RD101)
- ⑫ Const. parallel sidewalk ramps - 2  
(For details, see sht. 2B-20)
- ⑬ Sta. "SBB" 11+00 to Sta. "SBB" 30+34.06, Lt.  
Remove extg. concrete slab  
Removal of surfacings - 1,773 sq. yd.



**OREGON DEPARTMENT OF TRANSPORTATION**

**OBEC CONSULTING ENGINEERS**  
www.obec.com

CORPORATE OFFICE:  
820 COUNTRY CLUB ROAD, SUITE 100B EUGENE, OREGON 97401-6089  
REGIONAL OFFICES:  
LAKE OSWEGO, SALEM, MEDFORD, OREGON, VANCOUVER, WASHINGTON

**OR62: CORRIDOR SOLUTIONS UNIT 2 (MEDFORD)**

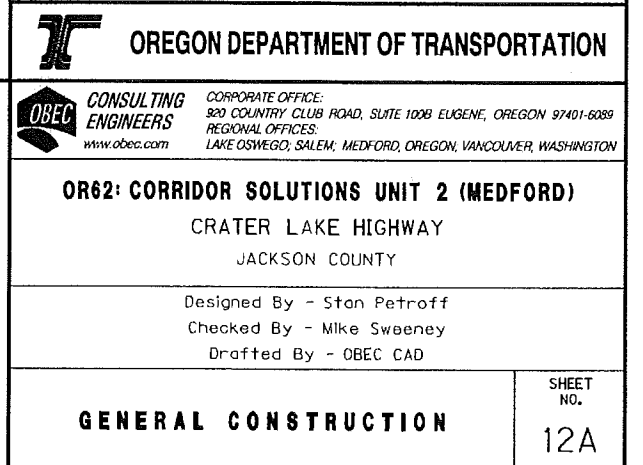
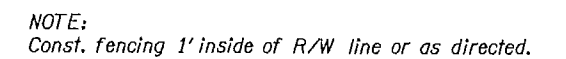
CRATER LAKE HIGHWAY  
JACKSON COUNTY

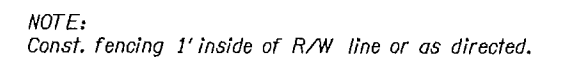
Designed By - Stan Petroff  
Checked By - Mike Sweeney  
Drafted By - OBEC CAD

**GENERAL CONSTRUCTION**

SHEET NO.  
**11A**





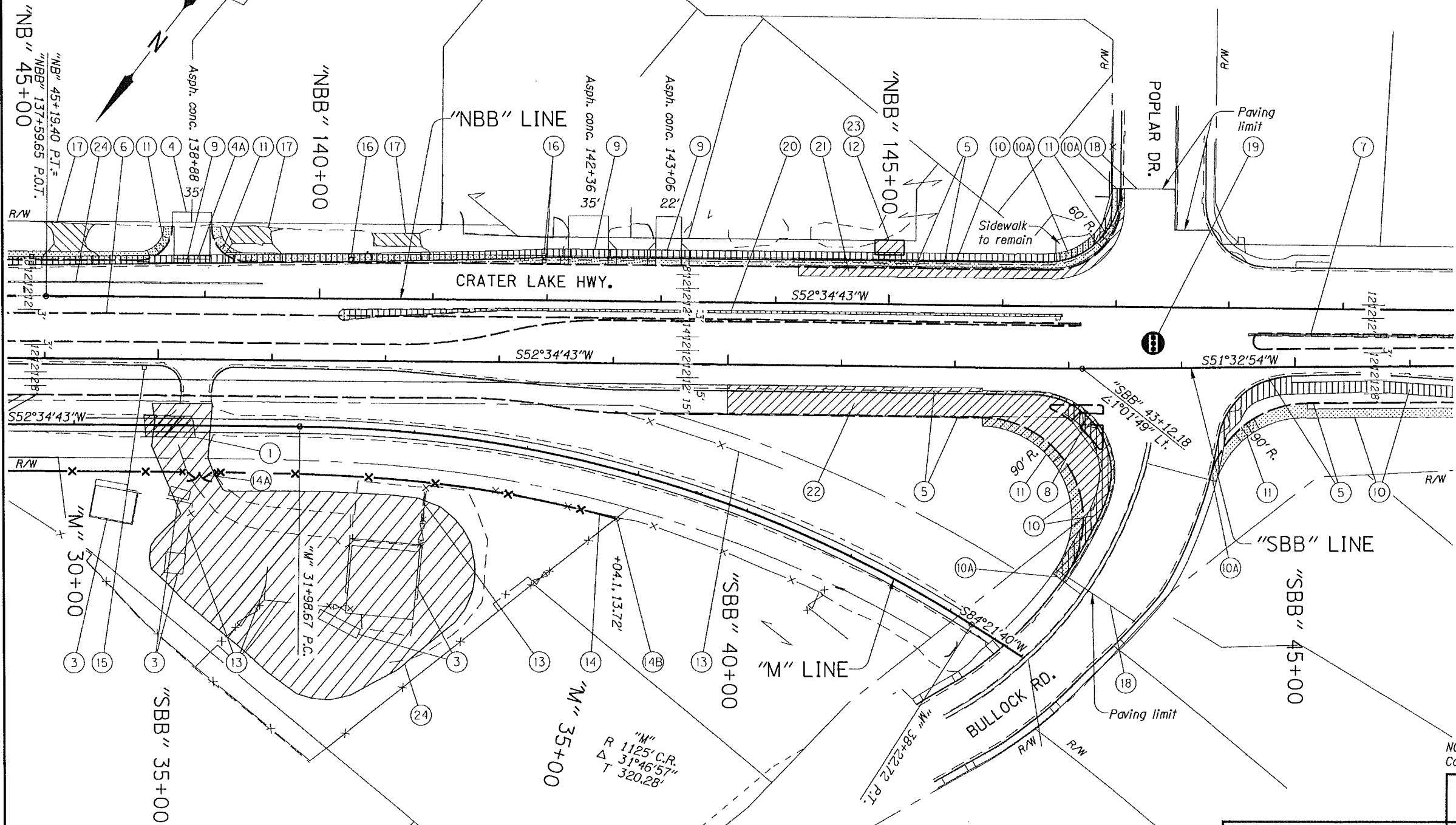


Designed By - Stan Petroff  
Checked By - Mike Sweeney  
Drafted By - OBEC CAD

SHEET  
NO.  
3A

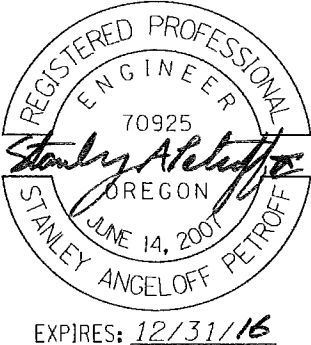
REGISTERED PROFESSIONAL  
ENGINEER  
70925  
*Stanley H. Petroff*  
OREGON  
JUNE 14, 2007  
STANLEY ANGELOFF PETROFF  
EXPIRES: 12/31/16





NOTE:  
Const. fencing 1' inside of R/W line or as directed.

LEGEND	
	REMOVAL OF SURFACINGS
	REMOVAL OF WALKWAYS, DRIVEWAYS & ISLANDS
	CONTAMINATED SOIL REMOVAL

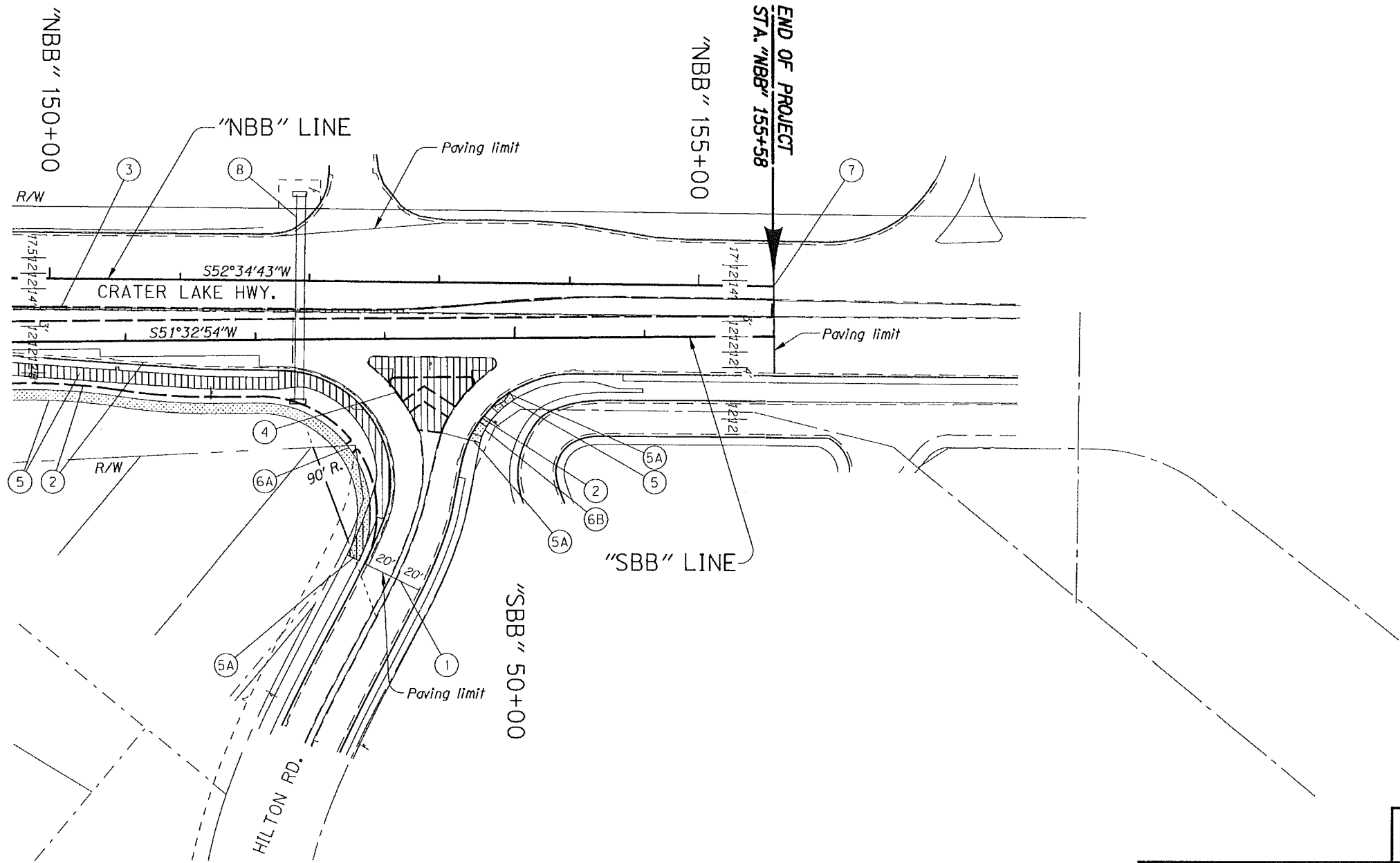


<b>CONSULTING ENGINEERS</b> www.obec.com	
CORPORATE OFFICE: 920 COUNTRY CLUB ROAD, SUITE 100B EUGENE, OREGON 97401-6089 REGIONAL OFFICES: LAKE OSWEGO, SALEM, MEDFORD, OREGON; VANCOUVER, WASHINGTON	
<b>OR62: CORRIDOR SOLUTIONS UNIT 2 (MEDFORD)</b> CRATER LAKE HIGHWAY JACKSON COUNTY	
Designed By - Stan Petroff Checked By - Mike Sweeney Drafted By - OBEC CAD	
<b>ALIGNMENT AND GENERAL CONSTRUCTION</b>	SHEET NO. <b>14</b>

Sec. 18, T. 37 S., R. 1 W., W.M.  
(MEDFORD)


48V-022

- ① Const. street connection
- ② Const. curb and gutter  
Remove extg. curb
- ③ See sht. 14, note 7  
Const. type "C" conc. island, mountable  
Remove extg. conc. island
- ④ Const. type "C" conc. island, mountable  
(Cut through design)  
Removal of island - 361 sq.yds.  
(For details, see sht. 2B-9)
- ⑤ Const. P.C. conc. sidewalk  
Remove extg. sidewalk
- ⑤A Match extg. sidewalk
- ⑥ Const. P.C. conc. sidewalk - 2
- ⑥A Ramp, option J
- ⑥B Ramp, option K
- ⑦ Const. asph. conc. pvmt. match
- ⑧ Sta. "NBB" 151+92  
Remove extg. sign bridge  
Const. new sign bridge before removing  
extg. sign bridge



LEGEND  
REMOVAL OF WALKWAYS & ISLANDS

REGISTERED PROFESSIONAL  
ENGINEER  
70925  
*Stanley Petroff*  
OREGON  
JUNE 14, 2007  
STANLEY ANGELOFF PETROFF  
EXPIRES: 12/31/16

 OREGON DEPARTMENT OF TRANSPORTATION	
 OBEC CONSULTING ENGINEERS CORPORATE OFFICE: 820 COUNTRY CLUB ROAD, SUITE 100B EUGENE, OREGON 97401-6089 REGIONAL OFFICES: LAKE OSWEGO; SALEM, MEDFORD, OREGON; VANCOUVER, WASHINGTON www.obec.com	
OR62: CORRIDOR SOLUTIONS UNIT 2 (MEDFORD) CRATER LAKE HIGHWAY JACKSON COUNTY	
Designed By - Stan Petroff Checked By - Mike Sweeney Drafted By - OBEC CAD	
ALIGNMENT AND GENERAL CONSTRUCTION	SHEET NO. 15



