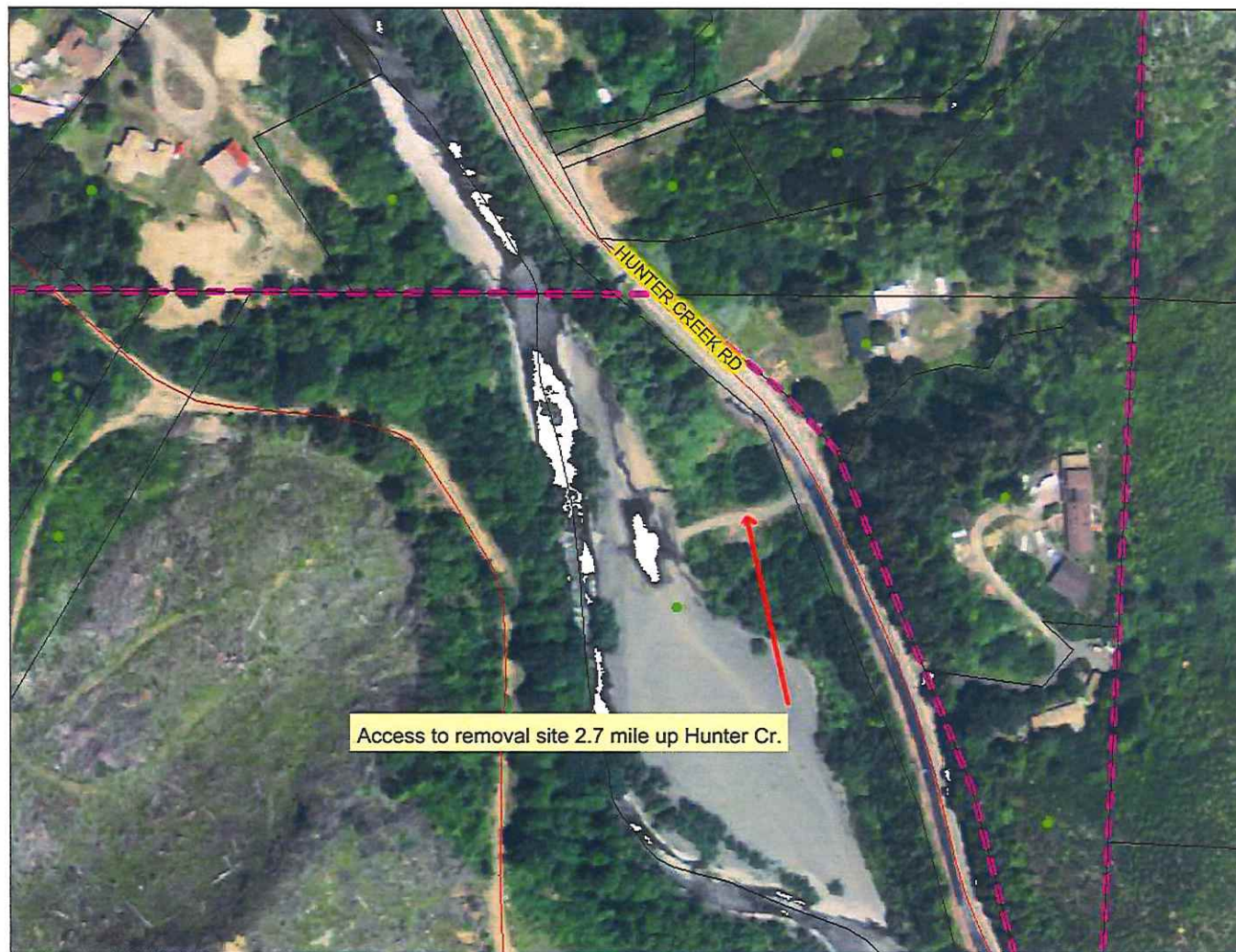


Removal Access



0 225 450 675 ft.

Map center: 42° 22' 9.7" N, 124° 24' 14.2" W

This map is a public resource of general information. Use this information at your own risk. Curry County makes no warranty of any kind, expressed or implied, including any warranty of merchantability, fitness for any particular purpose or any other matter.



Legend

- OWNER
- ROADS ORTHO CORRECTED
- PARCELS
- CITY LIMITS
- TOWNSHIP



Scale: 1:2,392

MENASHA BAR GRAVEL REMOVAL JULY 2015

WATER SURFACE ELEVATION AT TIME OF SURVEY
WAS 21.75 FEET AT STATION 0+00 AND 17.00
FEET AT STATION 13+00

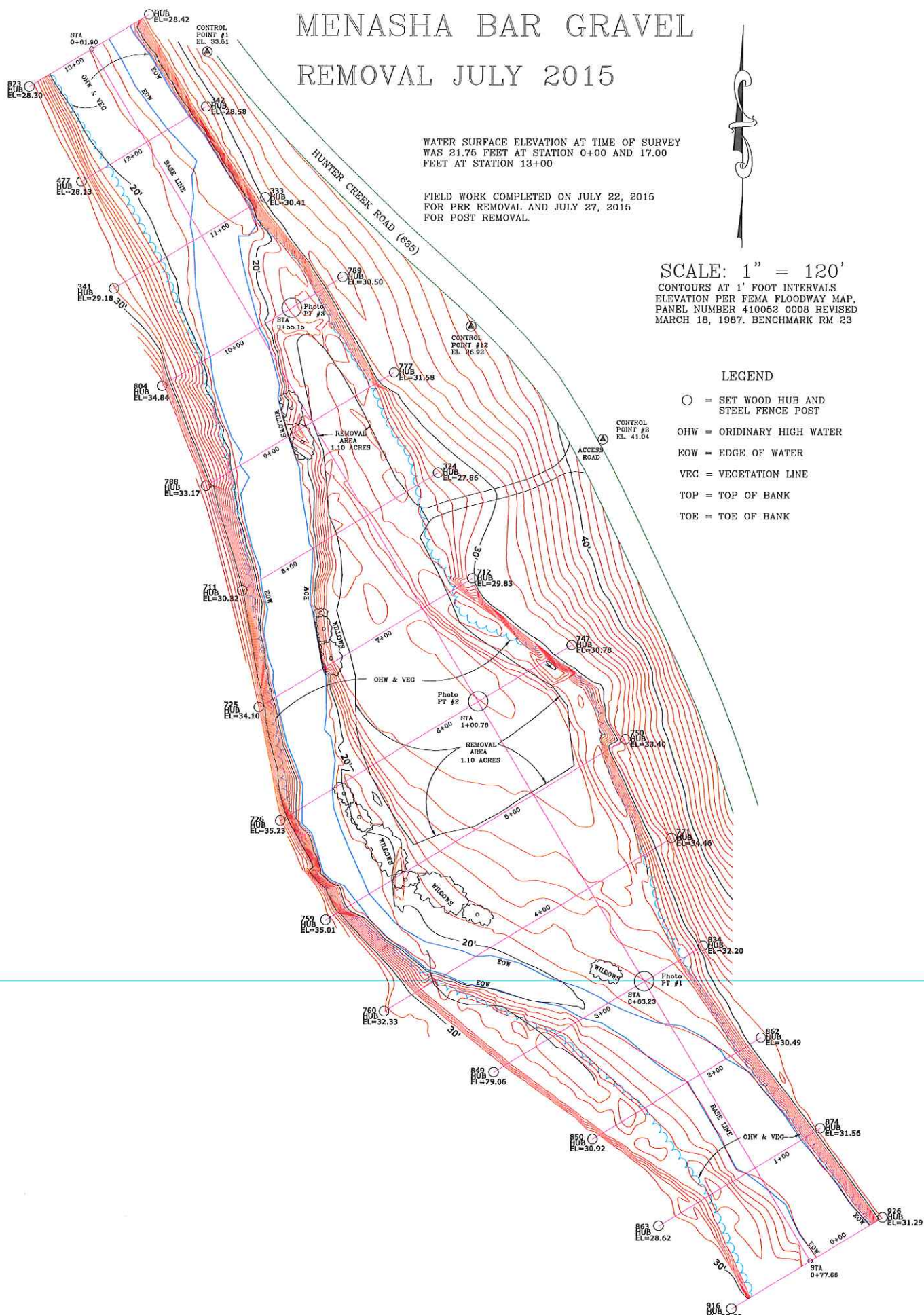
FIELD WORK COMPLETED ON JULY 22, 2015
FOR PRE REMOVAL AND JULY 27, 2015
FOR POST REMOVAL



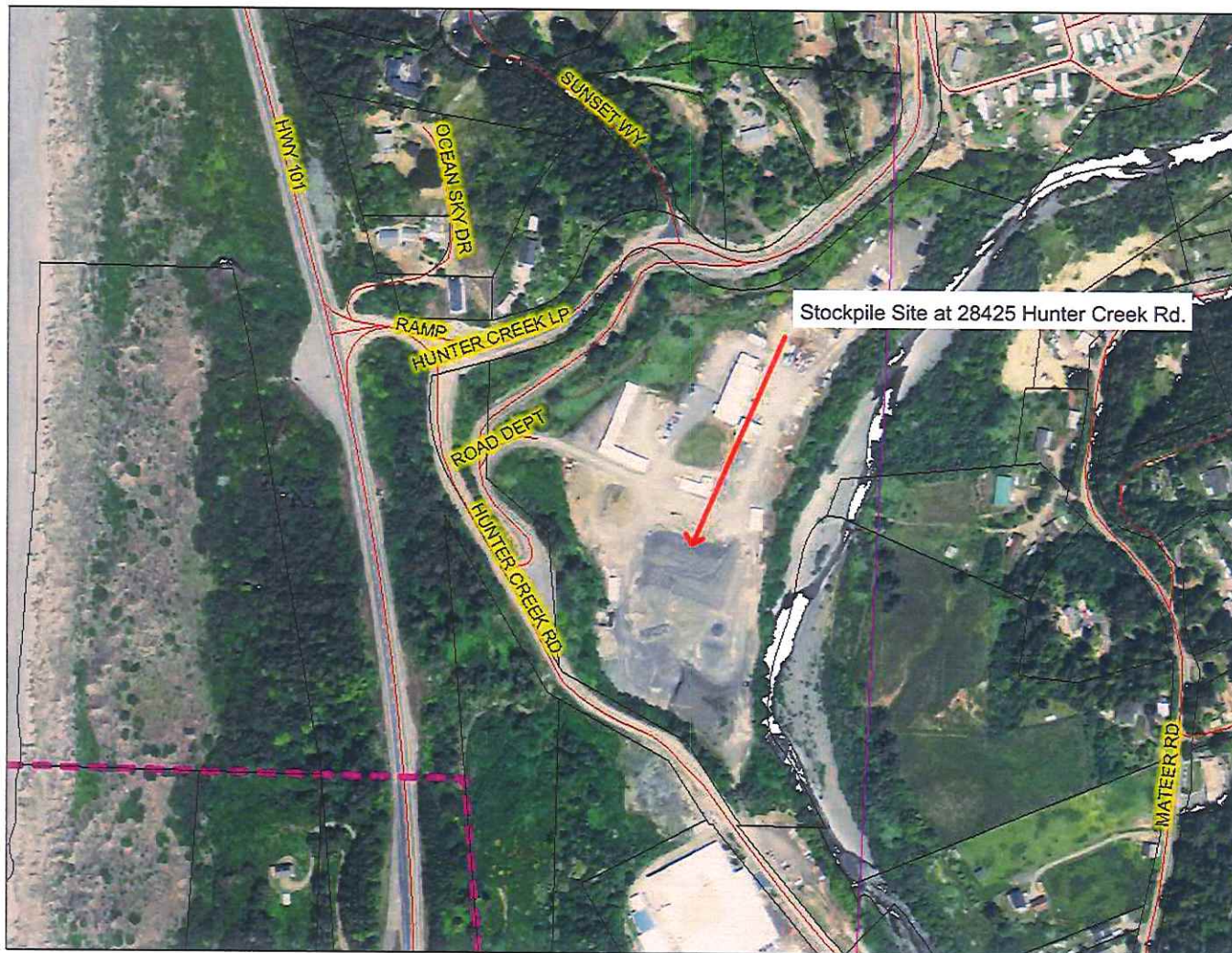
SCALE: 1" = 120'
CONTOURS AT 1' FOOT INTERVALS
ELEVATION PER FEMA FLOODWAY MAP,
PANEL NUMBER 410052 0008 REVISED
MARCH 18, 1987. BENCHMARK RM 23

LEGEND

- = SET WOOD HUB AND STEEL FENCE POST
- OHW = ORDINARY HIGH WATER
- EOW = EDGE OF WATER
- VEG = VEGETATION LINE
- TOP = TOP OF BANK
- TOE = TOE OF BANK



Stockpile site



Legend

- ROADS ORTHO CORRECTED
- PARCELS
- CITY LIMITS
- TOWNSHIP

0 500 1000 1500 ft.

Map center: 42° 22' 45.8" N, 124° 25' 6.3" W



Scale: 1:5,269

This map is a public resource of general information. Use this information at your own risk. Curry County makes no warranty of any kind, expressed or implied, including any warranty of merchantability, fitness for any particular purpose or any other matter.