



DEPARTMENT OF THE ARMY  
U.S. ARMY CORPS OF ENGINEERS, PORTLAND DISTRICT  
P.O. BOX 2946  
PORTLAND, OR 97208-2946

January 10, 2024

Regulatory Branch  
Corps No. NWP-2023-58



[Redacted] :

The U.S. Army Corps of Engineers (Corps) received your request for an Approved Jurisdictional Determination (AJD) of the aquatic resources, including wetlands, within the review area on the properties located along Allen Creek Road between Markus Road and Denton Trail in Grants Pass, Josephine County, Oregon at Latitude/Longitude: 42.409828°, -123.352192°. Other aquatic resources, including wetlands, that may occur on this property or on adjacent properties outside the review area are not the subject of this determination.

The Corps has determined Wetland A, Irrigation Ditch 1, and Allen Creek within the review area are waters of the U.S. The Corps has also determined Wetlands B-H, Ditches 1-14, and Swales 1 and 2 are not waters of the U.S. The enclosed *Memorandum for Record* (MFR) (Enclosure 1) provides the size, criteria and rationale for jurisdiction for all aquatic resources within the review area. The perimeter of the review area and the boundaries of the delineated waters of the U.S. subject to this AJD are identified on the enclosed drawings (Enclosure 2).

If you object to the enclosed AJD, you may request an administrative appeal under 33 CFR Part 331 as described in the enclosed *Notification of Administrative Appeal Options and Process and Request for Appeal (RFA)* form (Enclosure 3). To appeal this AJD, you must submit a completed *RFA* form to the Corps Northwestern Division (NWD) office at the address listed on the form. In order for the request for appeal to be accepted, the Corps must determine that the form is complete, that the request meets the criteria for appeal under 33 CFR § 331.5, and the form must be received by the NWD office within 60 days from the date on the form. It is not necessary to submit the form to the NWD office if you do not object to the enclosed AJD.

This AJD is valid for a period of five years from the date of this letter unless new information warrants revisions of the determination.

The delineation included herein has been conducted to identify the location and extent of the aquatic resources for purposes of the Clean Water Act for the particular site identified in this request. This delineation may not be valid for the Wetland Conservation Provisions of the Food Security Act of 1985, as amended. If you or your tenant are U.S. Department of Agriculture (USDA) program participants, or anticipate participation in USDA programs, you should discuss the applicability of a Natural Resources Conservation Service Certified Wetland Determination with the local USDA service center, prior to starting work.

We would like to hear about your experience working with the Portland District, Regulatory Branch. Please complete a customer service survey form available on our website (<https://regulatory.ops.usace.army.mil/customer-service-survey/>).

If you have any questions regarding our Regulatory Program or permit requirements for work in waters of the U.S., please contact [REDACTED]

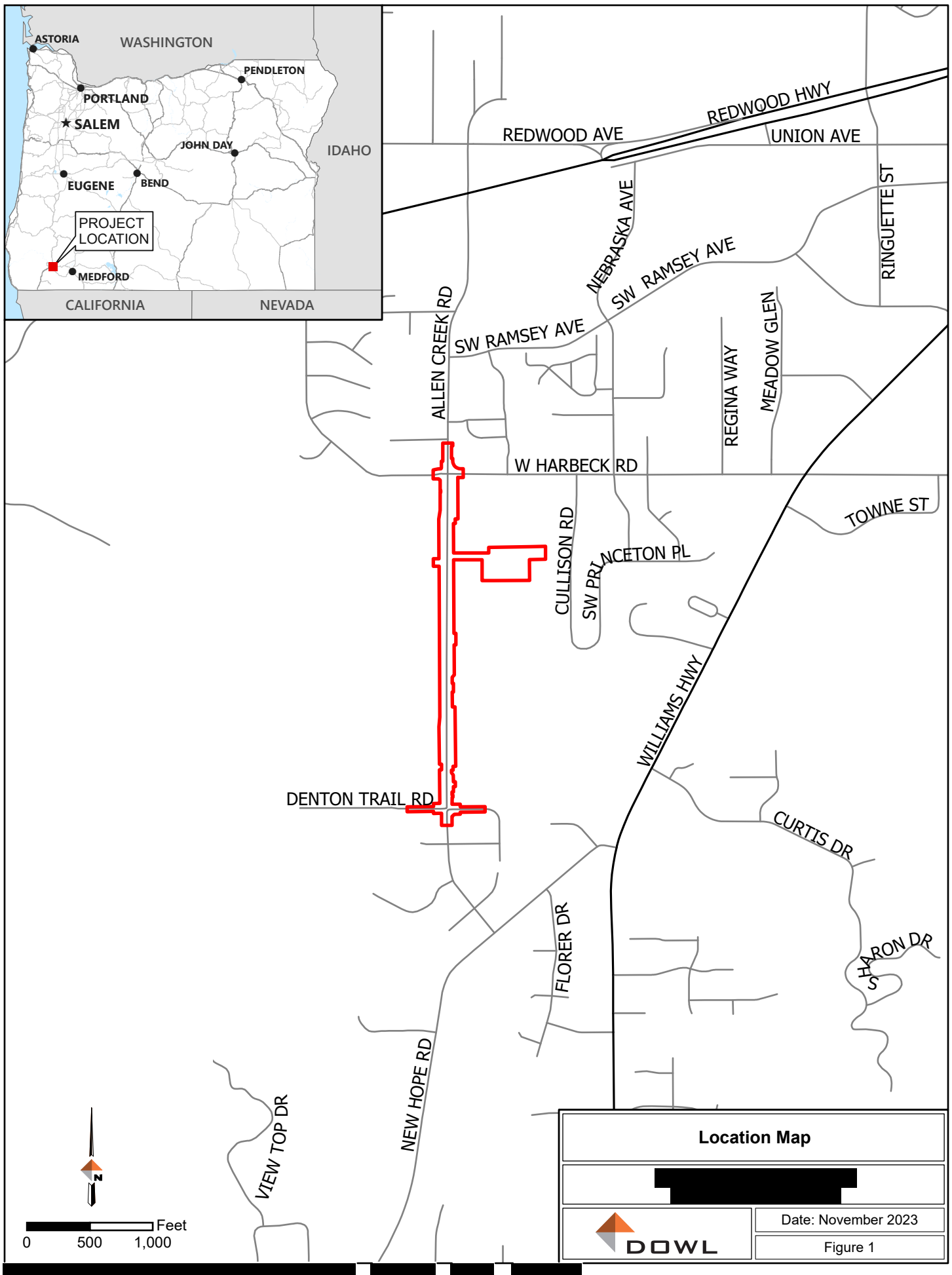
FOR THE COMMANDER, LARRY D. CASWELL, JR., PE, PMP, COLONEL, U.S. ARMY,  
DISTRICT COMMANDER and DISTRICT ENGINEER:

[REDACTED]  
For: [REDACTED] Chief, Regulatory Branch

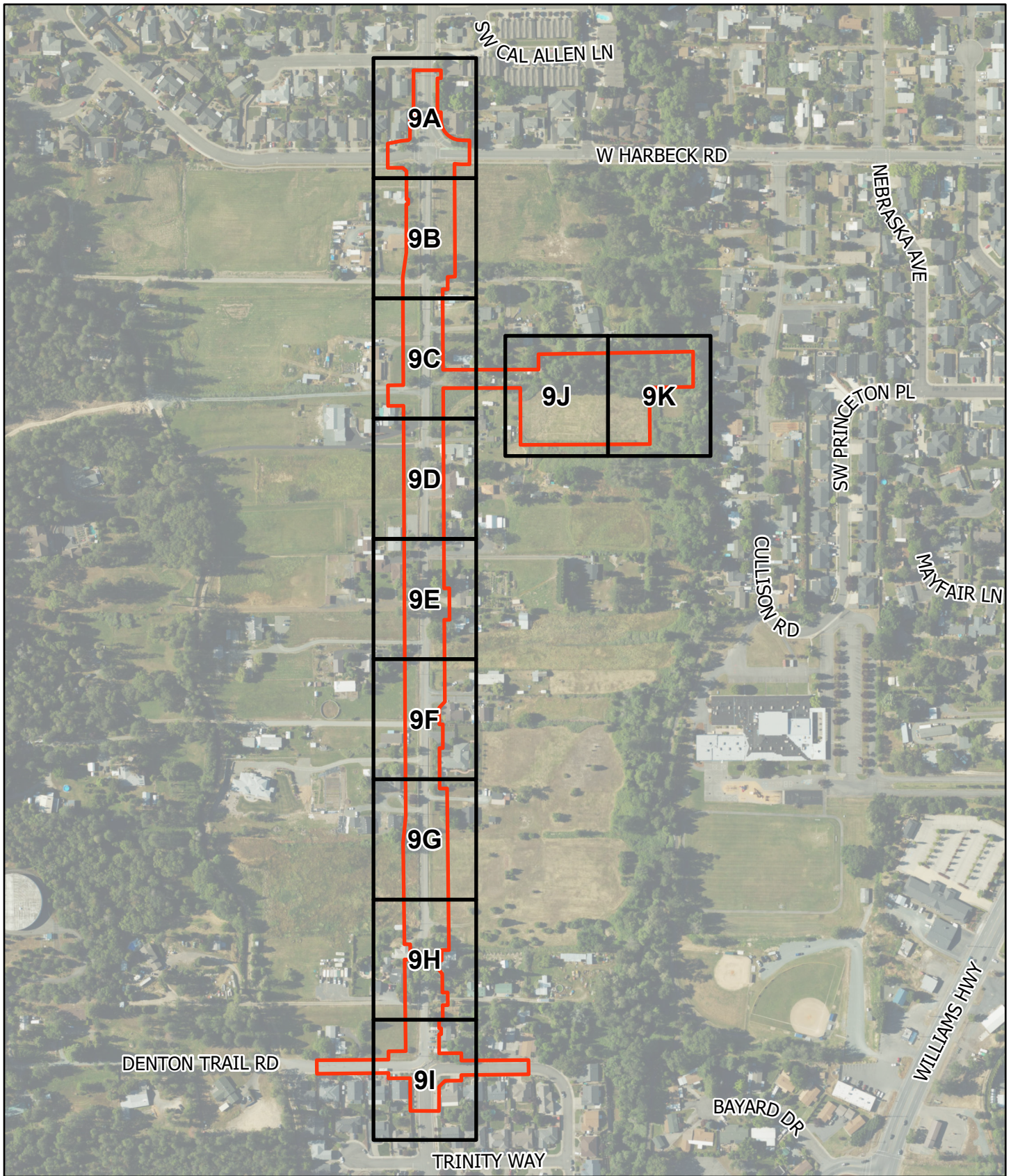
Enclosures

cc with drawings:

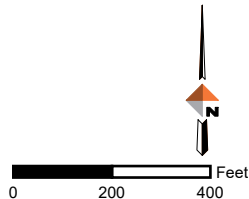
DOWL ([REDACTED])  
Oregon Department of State Lands ([REDACTED])  
Oregon Department of Environmental Quality ([REDACTED])







 Study Area



### Wetland Delineation Overview

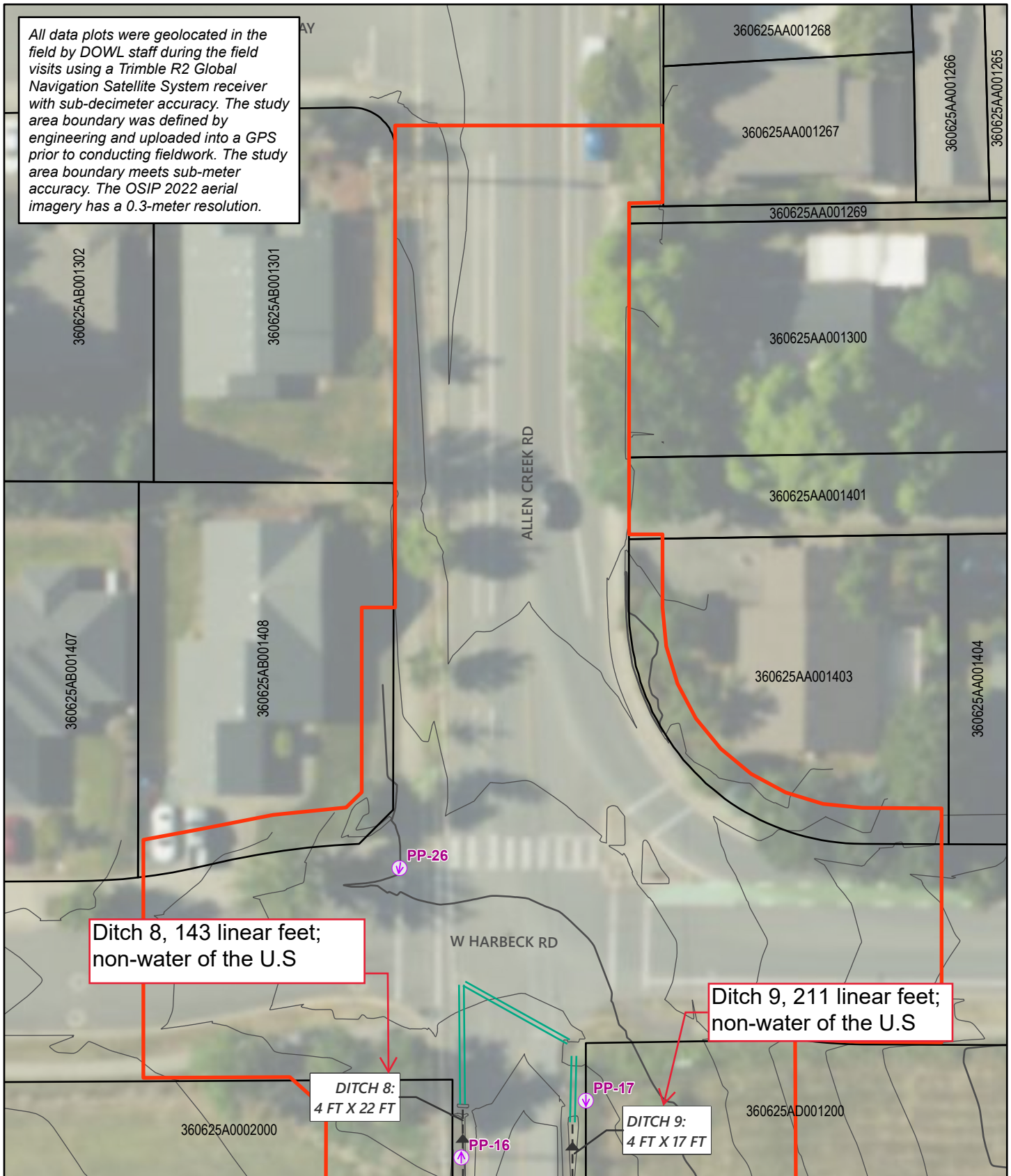


Date: November 2023

Figure 9

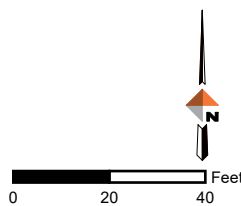


All data plots were geolocated in the field by DOWL staff during the field visits using a Trimble R2 Global Navigation Satellite System receiver with sub-decimeter accuracy. The study area boundary was defined by engineering and uploaded into a GPS prior to conducting fieldwork. The study area boundary meets sub-meter accuracy. The OSIP 2022 aerial imagery has a 0.3-meter resolution.



- ▬ Study Area
- Tax Lot Boundary (Josephine County)
- ▬ Culvert
- ▬ 1-ft Topographic Contour (from DOWL Field Survey)

- Photo Point
- ➔ Ditch



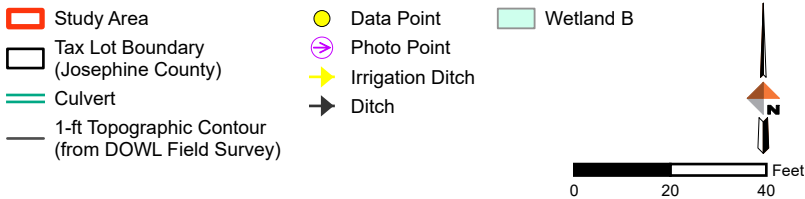
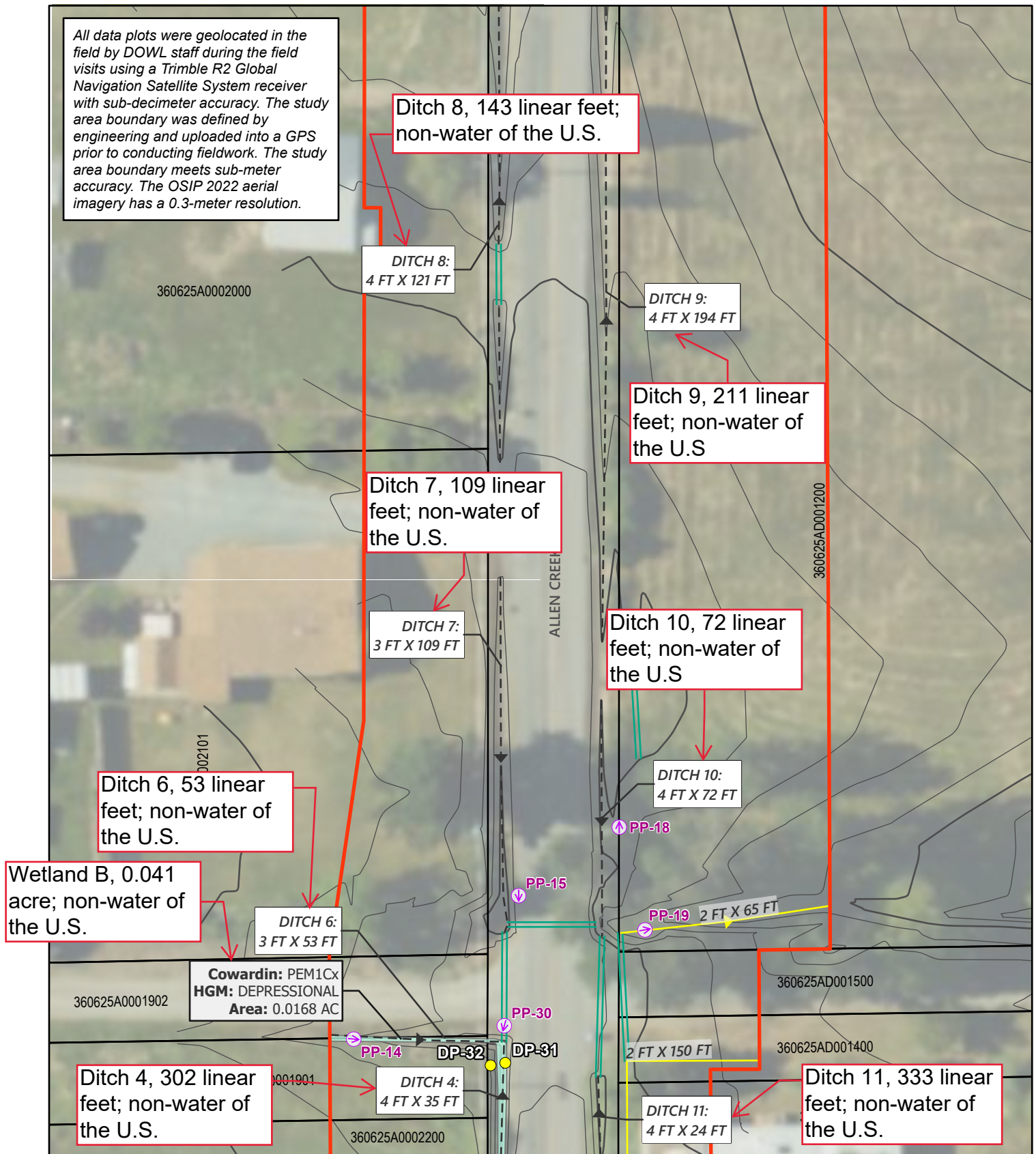
### Wetland Delineation



Date: November 2023

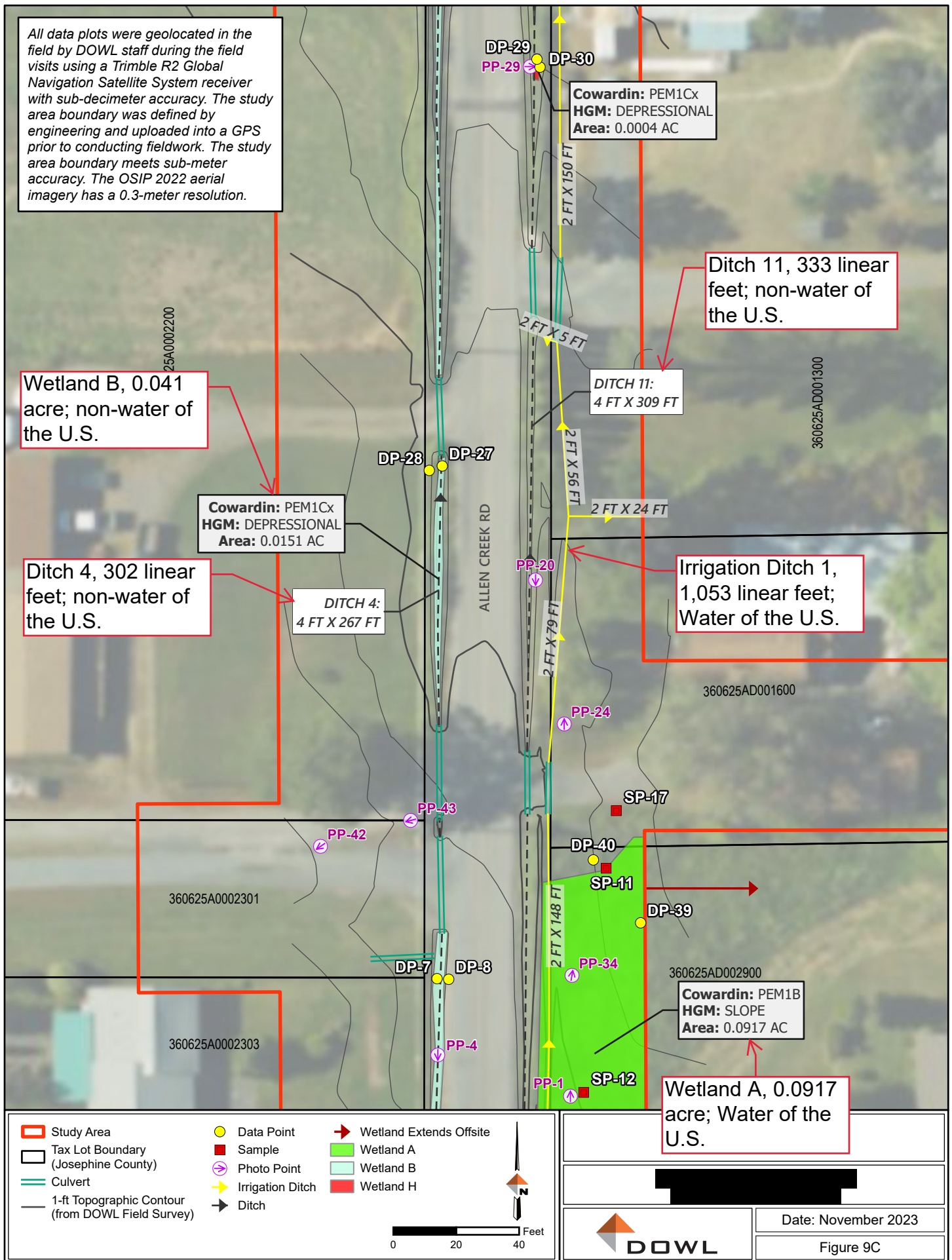
Figure 9A

All data plots were geolocated in the field by DOWL staff during the field visits using a Trimble R2 Global Navigation Satellite System receiver with sub-decimeter accuracy. The study area boundary was defined by engineering and uploaded into a GPS prior to conducting fieldwork. The study area boundary meets sub-meter accuracy. The OSIP 2022 aerial imagery has a 0.3-meter resolution.

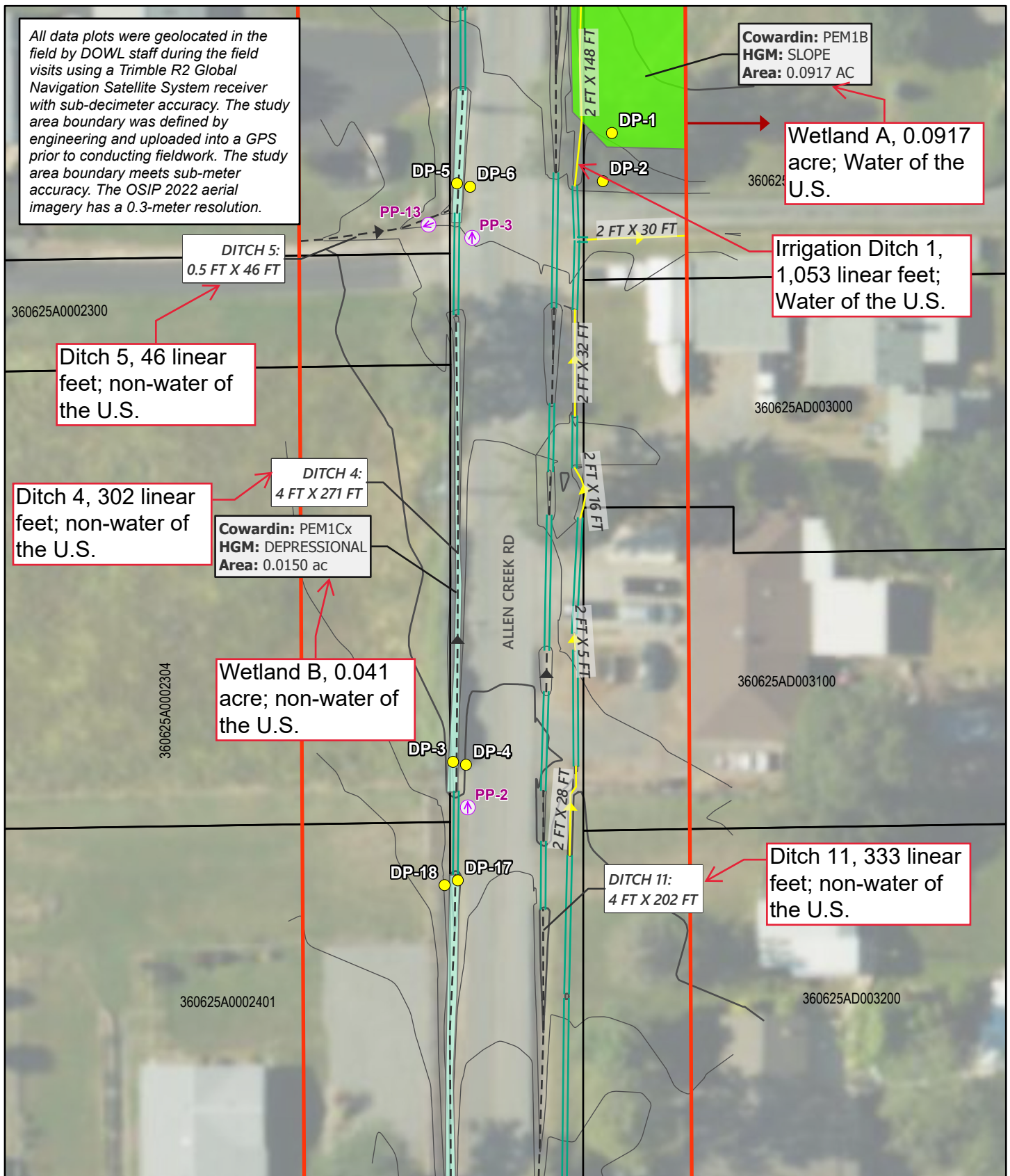


Wetland Delineation	
[Redacted]	
	Date: November 2023
	Figure 9B





Service Layer Credits: OSIP 2022 WM: Oregon Statewide Imagery Program (OSIP) - Oregon Imagery Framework Implementation Team



<ul style="list-style-type: none"> <li>Study Area</li> <li>Tax Lot Boundary (Josephine County)</li> <li>Culvert</li> <li>1-ft Topographic Contour (from DOWL Field Survey)</li> </ul>	<ul style="list-style-type: none"> <li>Data Point</li> <li>Photo Point</li> <li>Irrigation Ditch</li> <li>Ditch</li> </ul>	<ul style="list-style-type: none"> <li>Wetland Extends Offsite</li> <li>Wetland A</li> <li>Wetland B</li> </ul>	<p><b>Wetland Delineation</b></p> <p>[Redacted]</p> <p>Date: November 2023</p> <p>Figure 9D</p>
<p>0 20 40 Feet</p>			
<p>DOWL</p>			



All data plots were geolocated in the field by DOWL staff during the field visits using a Trimble R2 Global Navigation Satellite System receiver with sub-decimeter accuracy. The study area boundary was defined by engineering and uploaded into a GPS prior to conducting fieldwork. The study area boundary meets sub-meter accuracy. The OSIP 2022 aerial imagery has a 0.3-meter resolution.

Ditch 4, 302 linear feet; non-water of the U.S.

DITCH 4:  
4 FT X 128 FT

Cowardin: PEM1Cx  
HGM: DEPRESSIONAL  
Area: 0.0240 ac

Wetland B, 0.041 acre; non-water of the U.S.

Ditch 3, 83 linear feet; non-water of the U.S.

DITCH 3:  
6 FT X 74 FT

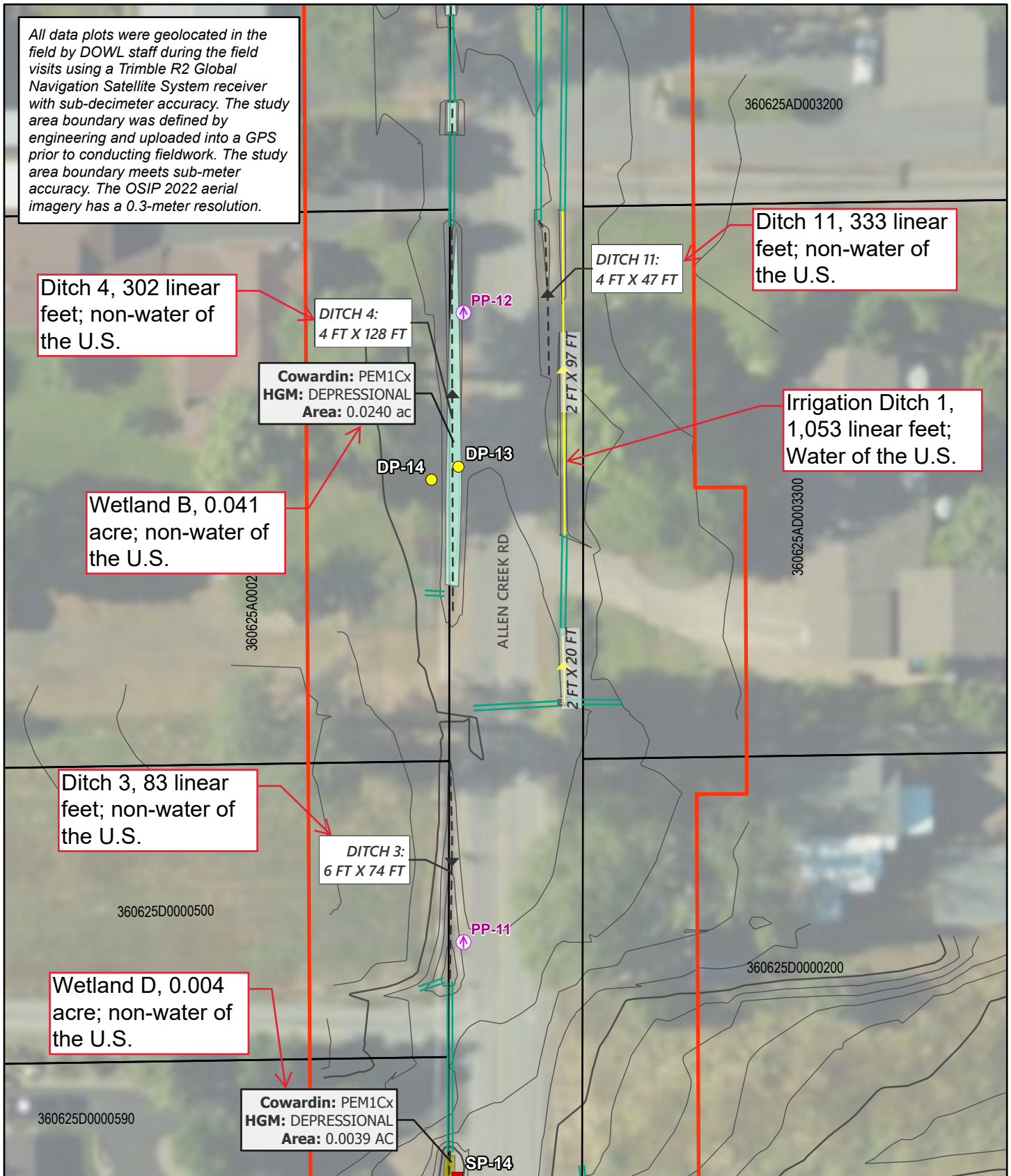
Wetland D, 0.004 acre; non-water of the U.S.

Cowardin: PEM1Cx  
HGM: DEPRESSIONAL  
Area: 0.0039 AC

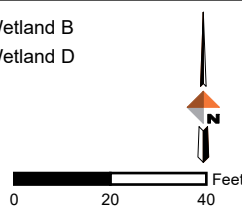
Ditch 11, 333 linear feet; non-water of the U.S.

DITCH 11:  
4 FT X 47 FT

Irrigation Ditch 1, 1,053 linear feet; Water of the U.S.



- ▬ Study Area
- Tax Lot Boundary (Josephine County)
- ▬▬ Culvert
- ▬ 1-ft Topographic Contour (from DOWL Field Survey)
- Data Point
- Sample
- Photo Point
- Irrigation Ditch
- Ditch
- Wetland B
- Wetland D

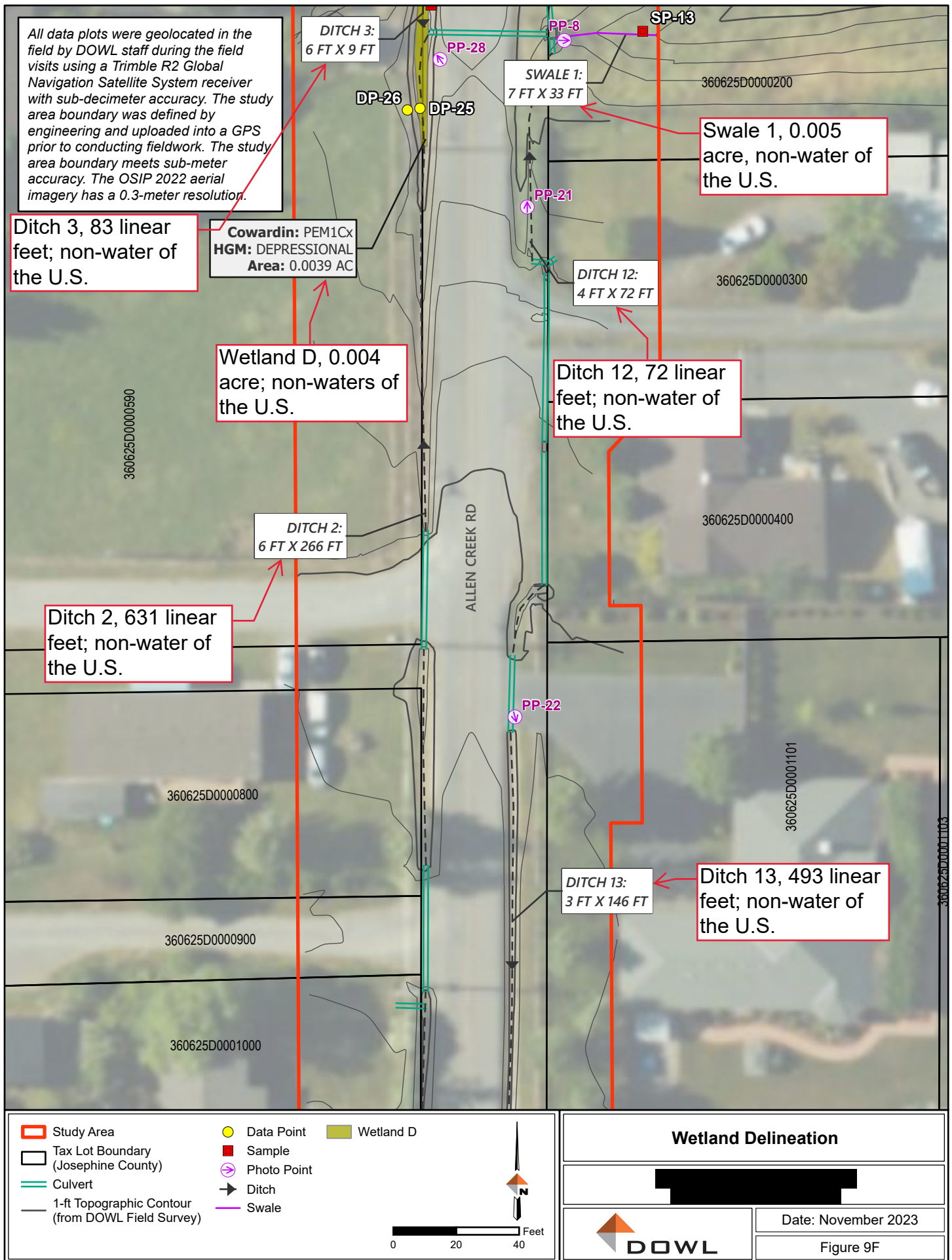


### Wetland Delineation



Date: November 2023

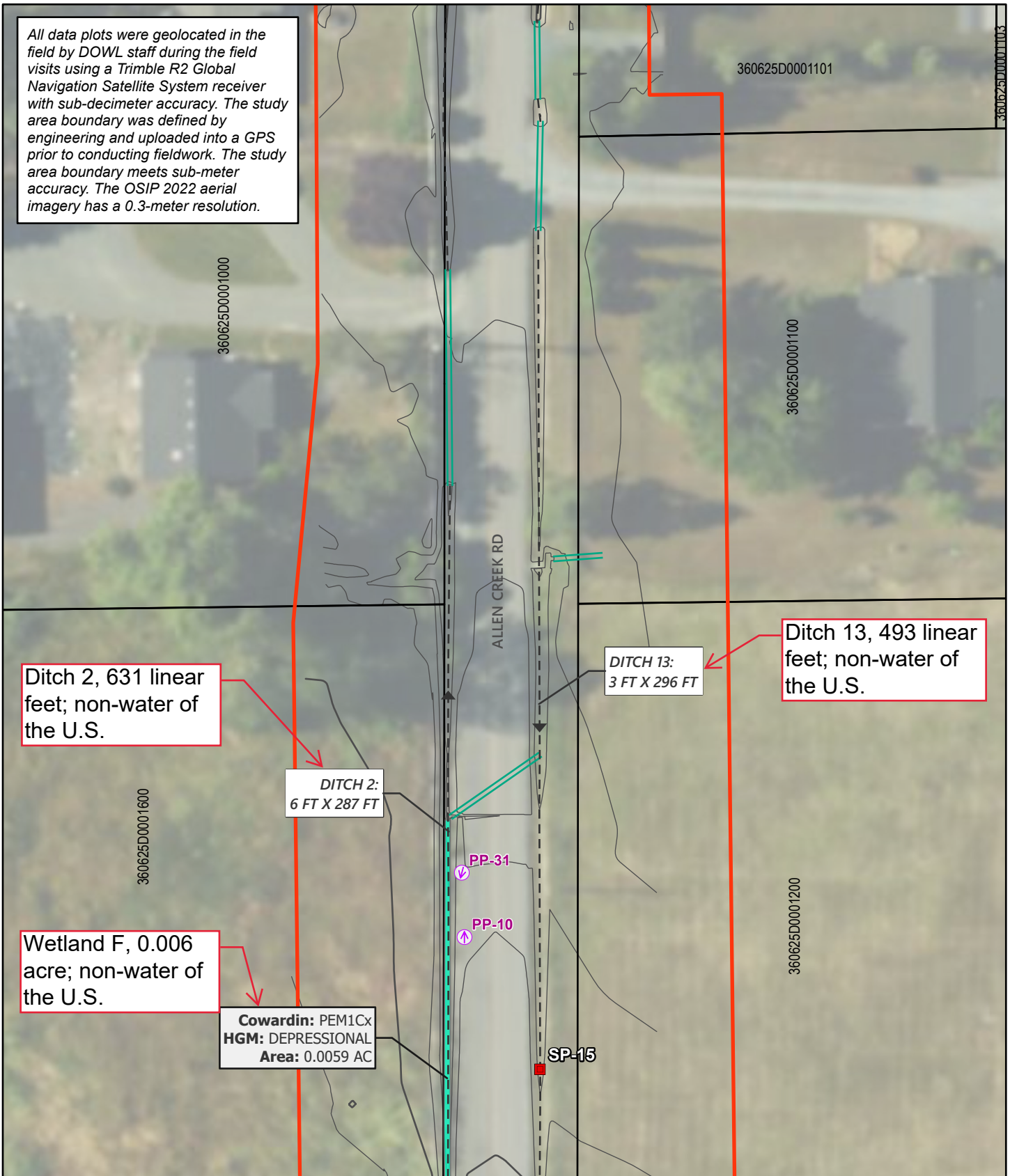
Figure 9E



Service Layer Credits: OSIP 2022 WM: Oregon Statewide Imagery Program (OSIP) - Oregon Imagery Framework Implementation Team



All data plots were geolocated in the field by DOWL staff during the field visits using a Trimble R2 Global Navigation Satellite System receiver with sub-decimeter accuracy. The study area boundary was defined by engineering and uploaded into a GPS prior to conducting fieldwork. The study area boundary meets sub-meter accuracy. The OSIP 2022 aerial imagery has a 0.3-meter resolution.



Ditch 2, 631 linear feet; non-water of the U.S.

DITCH 2:  
6 FT X 287 FT

Wetland F, 0.006 acre; non-water of the U.S.

**Cowardin:** PEM1Cx  
**HGM:** DEPRESSIONAL  
**Area:** 0.0059 AC

DITCH 13:  
3 FT X 296 FT

Ditch 13, 493 linear feet; non-water of the U.S.

ALLEN CREEK RD

PP-31

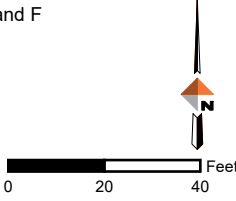
PP-10

SP-15

- Study Area
- Tax Lot Boundary (Josephine County)
- Culvert
- 1-ft Topographic Contour (from DOWL Field Survey)

- Sample
- Photo Point
- Ditch

Wetland F

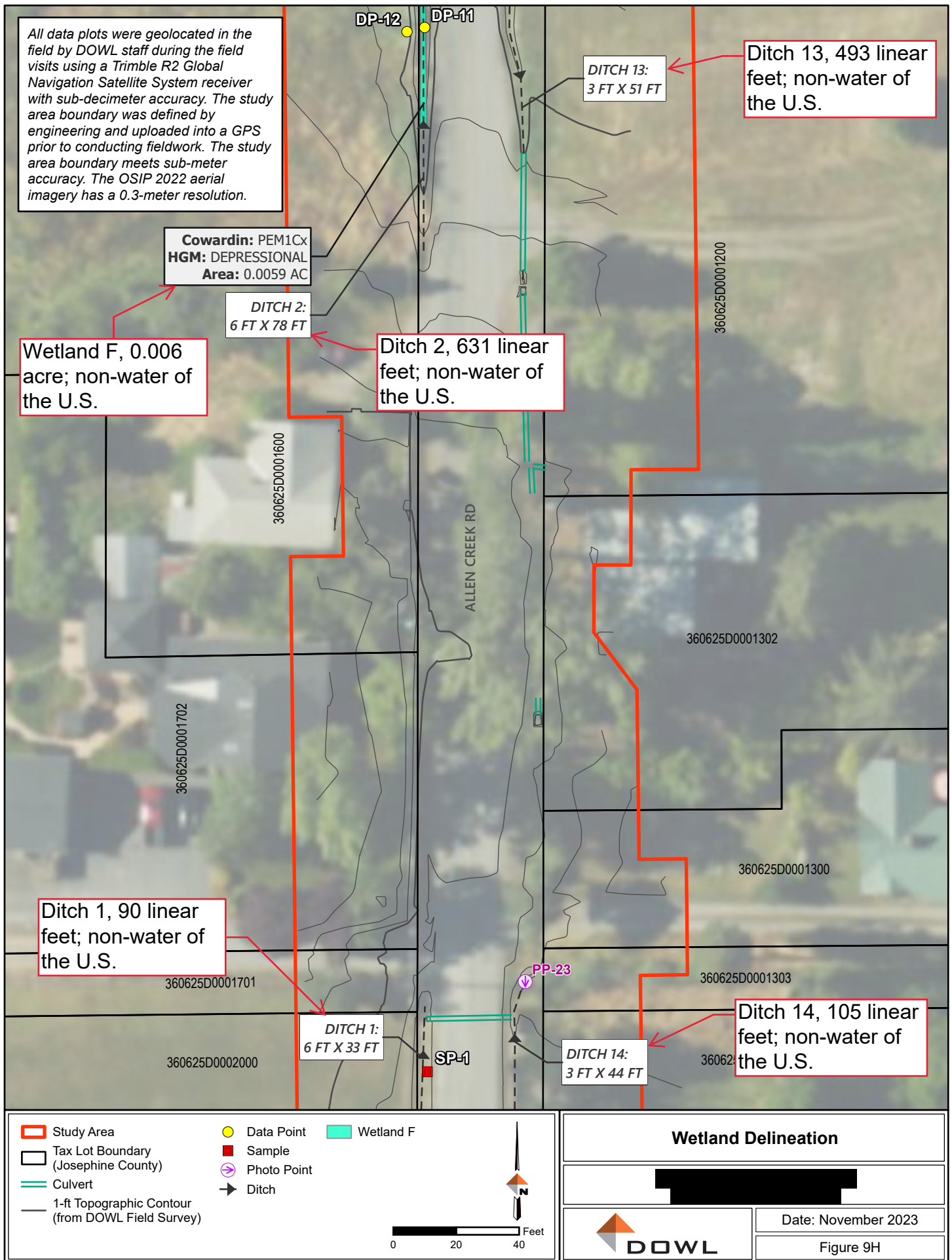


### Wetland Delineation

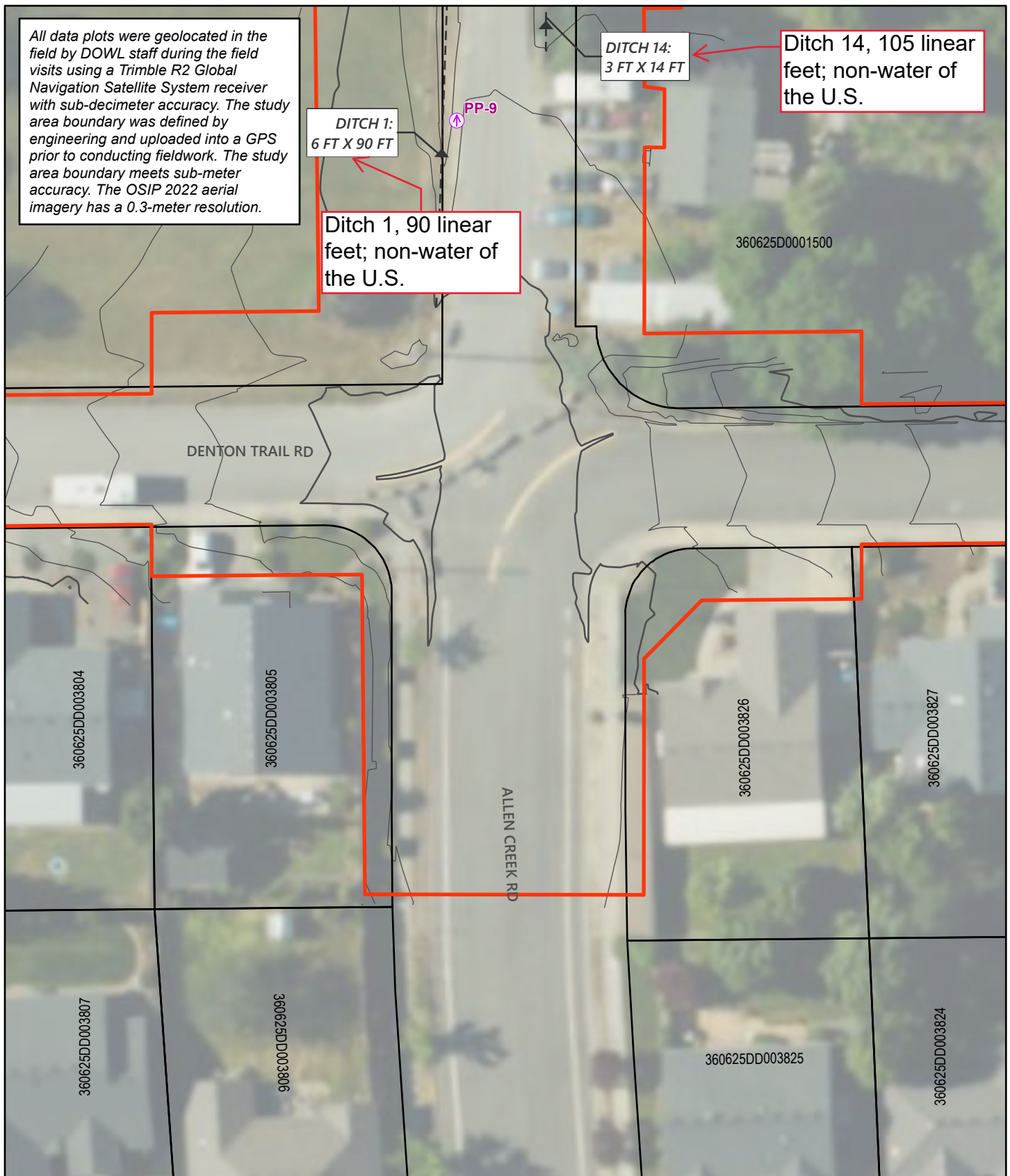




Date: November 2023

Figure 9G







<div data-bbox="116 1789 423 1932"> <div><span style="color: red;">▮</span> Study Area</div> <div><span style="border: 1px solid black; display: inline-block; width: 20px; height: 10px;"></span> Tax Lot Boundary (Josephine County)</div> <div><span style="color: gray;">—</span> 1-ft Topographic Contour (from DOWL Field Survey)</div> </div>	<div data-bbox="448 1789 612 1848"> <div><span style="color: magenta;">⬮</span> Photo Point</div> <div><span style="color: black;">➔</span> Ditch</div> </div>	<div data-bbox="675 1789 915 1984"> <div style="text-align: center;">               Feet              0      20      40           </div> </div>	
<div data-bbox="1096 1795 1365 1827" style="text-align: center;"> <b>Wetland Delineation</b> </div>		<div data-bbox="987 1923 1177 1988" style="text-align: center;">  <b>DOWL</b> </div>	
		<div data-bbox="1263 1921 1498 1950" style="text-align: right;">             Date: November 2023           </div>	
		<div data-bbox="1325 1963 1430 1990" style="text-align: right;">             Figure 9I           </div>	

Service Layer Credits: OSIP 2022 WM: Oregon Statewide Imagery Program (OSIP) - Oregon Imagery Framework Implementation Team

